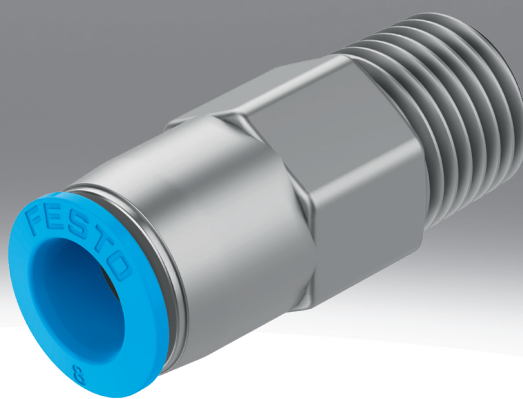


Push-in fitting, inches QSK

FESTO



Characteristics

At a glance

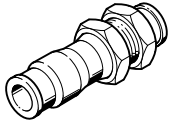
The self-sealing push-in fitting QSK blocks the air flow after the tubing is disconnected.

- PBT and nickel-plated brass
- Operating medium: compressed air, vacuum
- Straight shape, L-shape, push-in bulkhead connector

Series

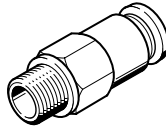
[QSSK]

Push-in bulkhead connector QSSK



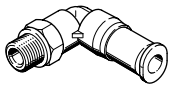
[QSK]

Push-in connector, self-sealing QSK



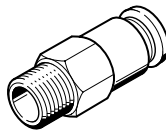
[QSKL]

Push-in connector, self-sealing, L-shape QSKL



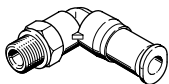
[QSMK]

Push-in connector, self-sealing, mini QSMK



[QSMKL]

Push-in connector, self-sealing, mini, L-shape QSMKL



Type code

001	Series	
QSK	Push-in connector, self-sealing QSK	
QSKL	Push-in connector, self-sealing, L-shape QSKL	
QSMK	Push-in connector, self-sealing, mini QSMK	
QSMKL	Push-in connector, self-sealing, mini, L-shape QSMKL	

002	Pneumatic connection 1 [inch]	
3/8	3/8 NPT	
1/8	1/8 NPT	
1/4	1/4 NPT	
1/2	1/2 NPT	
10-32-UNF	10/32 UNF	
1/8T	Push-in connector 1/8"	
1/4T	Push-in connector 1/4"	

003	Pneumatic connection 2 [inch]	
	Same size push-in connector as pneumatic connection 1	
1/2	Push-in connector 1/2"	
1/4	Push-in connector 1/4"	
3/8	Push-in connector 3/8"	
5/32	Push-in connector 5/32"	

004	System of units	
U	Imperial	

Datasheet

General technical data

Size	Mini	Standard
Design	Push-pull principle	
Mounting position	optional	
Type of seal on screwed plug ¹⁾	Coating, Sealing ring	
Nominal size	1.4 ... 3 mm	1.8 ... 6.4 mm

1) Sealing ring (G thread), coating (R thread)

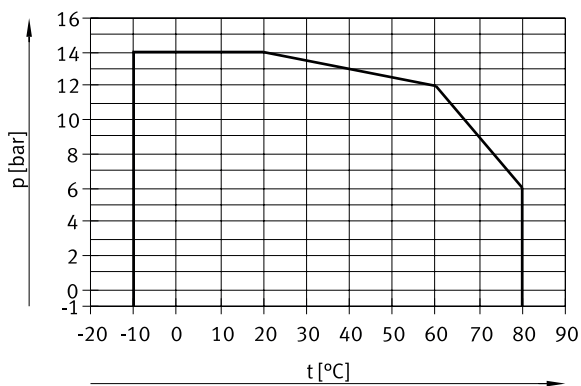
Operating and environmental conditions

Operating pressure complete temperature range	-0.95 ... 10 bar
Operating medium	Compressed air to ISO 8573-1:2010 [7:::]
Note on operating and pilot medium	Lubricated operation possible
Ambient temperature	-10 ... 60°C
Corrosion resistance class CRC ¹⁾	1 - Low corrosion stress
Maritime classification ²⁾	See certificate

1) More information www.festo.com/x/topic/crc

2) More information www.festo.com/catalogue/qs → Support/Downloads

Operating pressure p as a function of temperature t

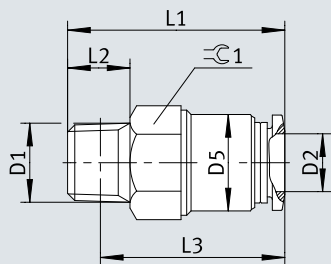


Materials

Material housing	Brass, PBT, Nickel-plated
Material release ring	POM
Material tubing seal	NBR
Material tubing clamp component	High-alloy stainless steel
Note on materials	RoHS-compliant
LABS (PWIS) conformity	VDMA24364-B1/B2-L

Dimensions

Dimensions – Push-in fitting, self-sealing QSK/QSMK-...-...-U

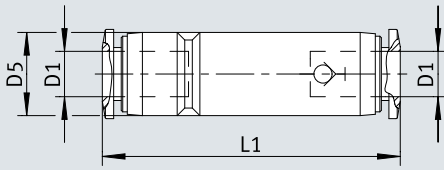
Download CAD data www.festo.com

	D1	D2 [inch]	D5 ∅ [inch]	L1 [inch]	L2 [inch]	L3 [inch]	∠1 [inch]
QSMK-1/8-1/4-U	1/8-27NPT	1/4	10,8	27	8	22,9	7/16
QSMK-1/4-1/4-U	1/4-18NPT	1/4	12	27	11	21,2	9/16
QSK-1/4-3/8-U	1/4-18NPT	3/8	17	38,3	11	32,5	11/16
QSK-3/8-3/8-U	3/8-18NPT	3/8	17	39,8	12	33,7	11/16
QSK-3/8-1/2-U	3/8-18NPT	1/2	20,8	45,6	12	39,5	7/8
QSK-1/2-1/2-U	1/2-14NPT	1/2	20,8	45,7	15	37,6	7/8

Dimensions

Dimensions – Push-in connector, self-sealing QSMK...T-U

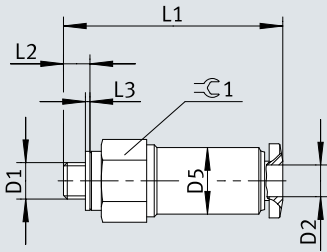
Download CAD data www.festo.com



	D1 [inch]	D5 [inch]	L1 [inch]
QSMK-1/8T-U	1/8	8,5	36,8
QSMK-1/4T-U	1/4	11	39,8

Dimensions

Dimensions – Push-in fitting, self-sealing QSMK-10/32UNF-5/32-U

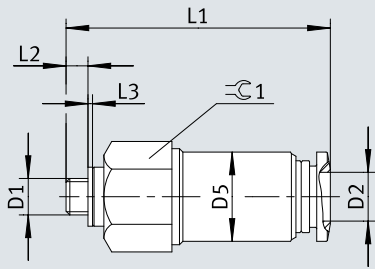
Download CAD data www.festo.com

	D1	D2 ∅ [inch]	D5 ∅ [inch]	L1 [inch]	L2 [inch]	L3 [inch]	∠ 1 [inch]
QSMK-10-32UNF-5/32-U	10-32UNF	5/32	8,8	29	3,5	0,6	3/8

Dimensions

Dimensions – Push-in fitting, self-sealing QSMK-10/32UNF-1/4-U

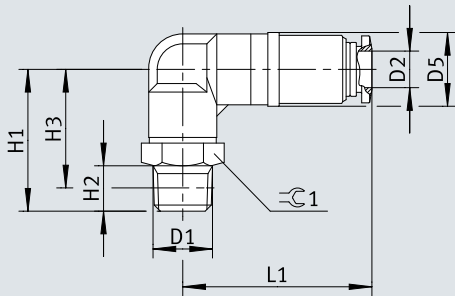
Download CAD data www.festo.com



	D1	D2	D5 ∅	L1	L2	L3	☉ 1
		[inch]	[inch]	[inch]	[inch]	[inch]	[inch]
QSMK-10-32UNF-1/4-U	10-32UNF	1/4	10,8	31,8	3	0,6	7/16

Dimensions

Dimensions – Push-in L-fitting, self-sealing QSKL/QSMKL-1/4-...-U

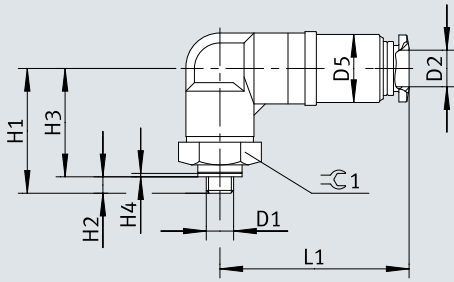
Download CAD data www.festo.com

	D1	D2 ∅ [inch]	D5 ∅ [inch]	H1 [inch]	H2 [inch]	H3 [inch]	L1 [inch]	⊕ 1 [inch]
QSMKL-1/4-1/4-U	1/4-18NPT	1/4	12,5	28	11	34,75	32	9/16
QSKL-1/4-3/8-U	1/4-18NPT	3/8	17,5	35	11	40,25	45,6	9/16

Dimensions


Dimensions – Push-in L-fitting, self-sealing QSMKL-10/32UNF-...-U


Download CAD data www.festo.com




	D1	D2 ∅ [inch]	D5 ∅ [inch]	H1 [inch]	H2 [inch]	H3 [inch]	H4 [inch]	L1 [inch]	⊕ 1 [inch]
QSMKL-10-32UNF-1/4-U	10-32UNF	1/4	12,5	19	2,8	29,25	0,6	30,6	7/16

Ordering data

Ordering data – Push-in fitting, self-sealing QSK/QSMK						
	Size	Pneumatic connection, port 1	Pneumatic connection, port 2	Product weight	Part no.	Type
	Mini	Male thread 10-32 UNF-2A	For tubing outside diameter of 5/32"	7 g	190704	QSMK-10-32-UNF-5/32-U
			For tubing outside diameter of 1/4"	15 g	190707	QSMK-10-32-UNF-1/4-U
		Male thread 1/8 NPT	13 g	190710	QSMK-1/8-1/4-U	
	Standard	Male thread 1/4 NPT	For tubing outside diameter of 3/8"	24 g	190712	QSMK-1/4-1/4-U
				36 g	190714	QSK-1/4-3/8-U
		Male thread 3/8 NPT	40 g	190716	QSK-3/8-3/8-U	
		Male thread 1/2 NPT	66 g	190717	QSK-3/8-1/2-U	
		For tubing outside diameter of 1/2"	69 g	190718	QSK-1/2-1/2-U	

Ordering data – Push-in connector, self-sealing QSK/QSMK						
	Size	Pneumatic connection, port 1	Pneumatic connection, port 2	Product weight	Part no.	Type
	Mini	For tubing outside diameter of 1/8"	For tubing O.D. 1/8"	4 g	190592	QSMK-1/8T-U
			For tubing O.D. 1/4"	For tubing outside diameter of 1/4"	7 g	190595

Ordering data – Push-in L-fitting, self-sealing QSKL/QSMKL						
	Pneumatic connection, port 1	Pneumatic connection, port 2	Nominal size	Product weight	Part no.	Type
	Male thread 10-32 UNF-2A	For tubing outside diameter of 1/4"	1.8 mm	12 g	190740	QSMKL-10-32-UNF-1/4-U
			2.9 mm	21 g	190745	QSMKL-1/4-1/4-U
	Male thread 1/4 NPT	For tubing outside diameter of 3/8"	5.2 mm	36 g	190747	QSKL-1/4-3/8-U