

Operator unit CDSA

FESTO



Characteristics

At a glance

- For mobile commissioning and optimisation
- Integrated reporting system and user administration in combination with the robotics library from Festo
- Interface unit for installation in a control cabinet and various cable lengths available

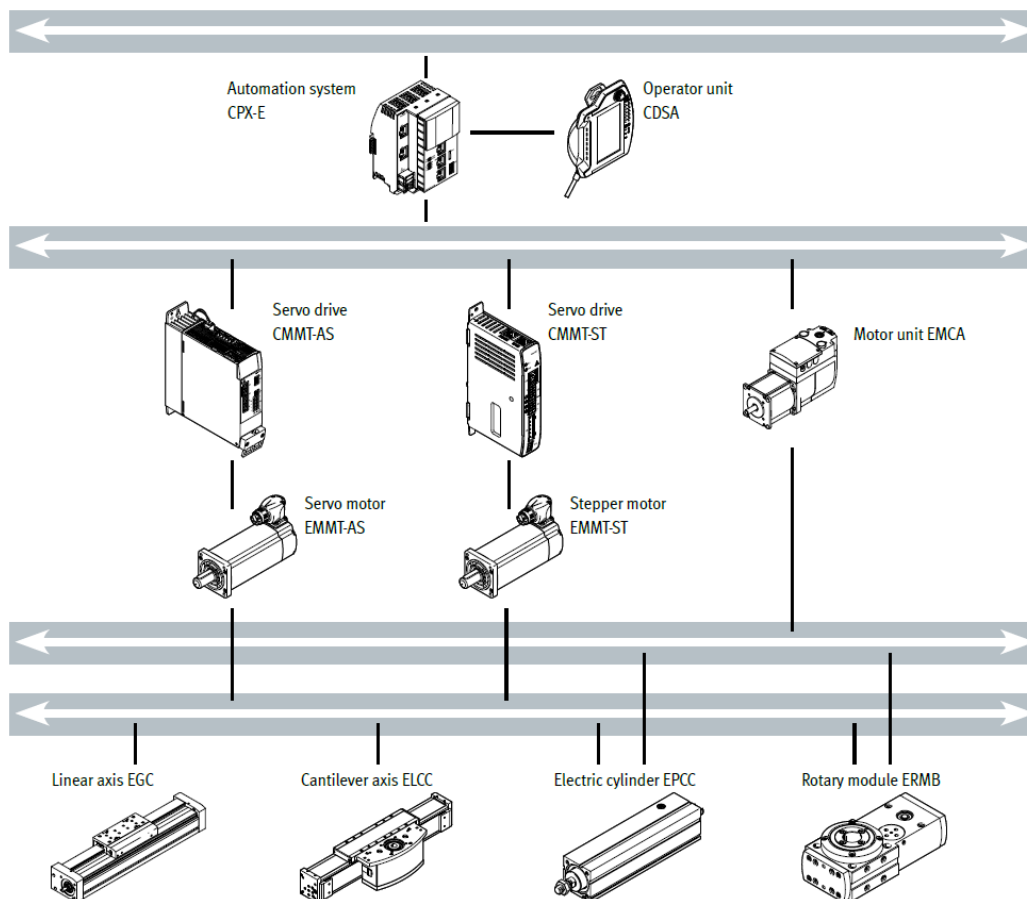
Convenient – simple programming with teach-in

- When creating a motion program, the motion sequence is very often known, but the exact position that needs to be approached, e.g. gripper or set-down position, is not. This can only be determined directly during commissioning by using a precise approach.
- That is why the automation system CPX-E together with the operator unit CDSA offers dialogue-based software that enables the required positions to be taught in quickly and easily.

Flexibility – mobile operation and monitoring with CDSA

- The CDSA operator unit has an emergency stop switch and a 3-stage enabling button. Both devices have a 2-channel design and are designed to be integrated in the customer's safety circuits. The enabling button is used to enable the drive power in set-up mode.
- In addition to the hardware and the ergonomic handle, the CDSA has a colour touchscreen as well as a keyboard which can be used to start actions.

Overview



Type code

001	Series
CDSA	Operator unit CDSA

002	Device version
D3	Operator unit C70

003	Operating mode
RV	CODESYS remote target visualisation

Datasheet

General technical data

Operator controls	Touch sensitive keyboard, Enable control unit, Emergency stop button
Display	LCD display, With backlighting
Display size	7"
Display characteristics	Touchscreen
Display resolution	WSVGA, 600x1024 pixels
Number of function keys	20
Number of system LEDs	5
Product weight	950 g

Electrical data

Operational voltage range DC	19.2 ... 30 V
Nominal operating voltage DC	24 V
Power failure bridging	10 ms
Input current	<= 5.6 A
Electrical power consumption	12 W
Note on permissible current load at 40°C	10 – 1000 mA at each contact for emergency stop, < 500 mA for enable control unit
IP address allocation	FCT, DHCP

Interfaces

USB interface, function	File transfer, Software update
USB interface, type of connection	Socket
USB interface, connection technology	USB 2.0 type A
USB interface, number of pins/wires	4
Ethernet interface, function	Diagnostics, Network connection to PLC, Parameterisation
Ethernet interface, connection type	Socket
Ethernet interface, connection system	RJ45
Ethernet interface, number of pins/wires	8
Ethernet interface, transmission rate	100 Mbit/s
Ethernet interface, protocol	TCP/IP

Datasheet

Operating and environmental conditions

Ambient temperature	0 ... 40°C
Storage temperature	-20 ... 70°C
Relative air humidity	5 - 95%
Degree of protection	IP65
Note on degree of protection	When USB cover flap is closed, In assembled state
Protection class	III
Nominal altitude of use	<= 2000 m NHN
CE mark (see declaration of conformity)	To EU EMC Directive To EC Machinery Directive In accordance with EU RoHS Directive
UKCA marking (see declaration of conformity)	To UK instructions for EMC To UK regulations for machines To UK RoHS instructions
Approval	CCC, RCM trademark, c UL us listed (OL)
KC mark	KC-EMV
KC Approval No. EMC/Radio	R-R-FTO-KC-2020-1041
Certificate issuing authority	UL E239998
Utilisation category	DC-13, emergency stop
Service life characteristic value B10D, subcomponent	0,25 Mio SP, emergency stop, 1 million switching cycles, enable control unit
Note on permissible current load at 40°C	10 – 1000 mA at each contact for emergency stop, < 500 mA for enable control unit
Corrosion resistance class CRC ¹⁾	0 - No corrosion stress

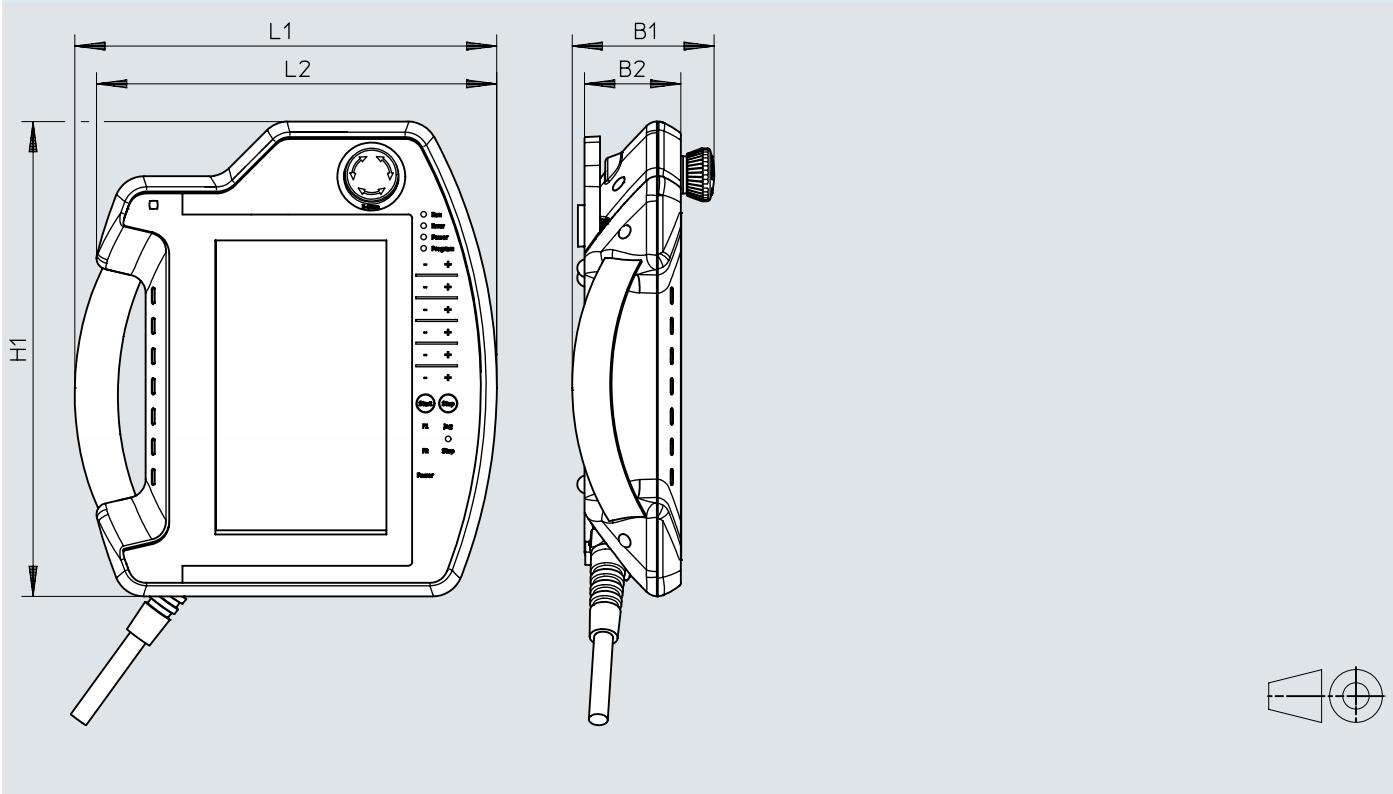
1) More information: www.festo.com/x/topic/crc

Materials

Material housing	ABS
Note on materials	RoHS-compliant
LABS (PWIS) conformity	VDMA24364 zone III

Dimensions

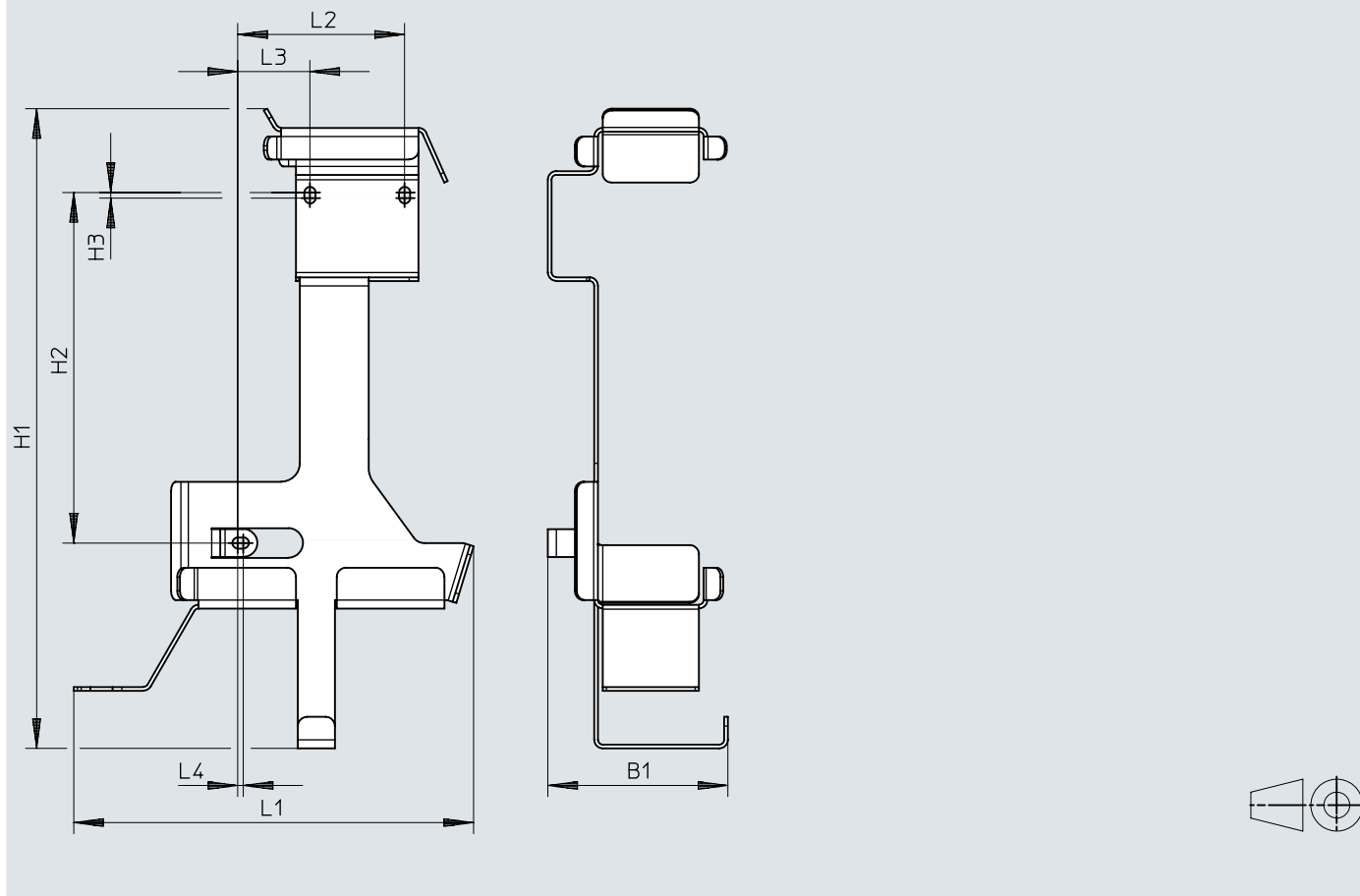
Dimensions – Operator units CDSA [Download CAD data](http://www.festo.com) www.festo.com



	B1	B2	H1	L1	L2
CDSA-D3-RV	75	52	251	223	211


Dimensions

Dimensions – Retainer CAFM

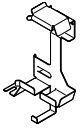
Download CAD data www.festo.com

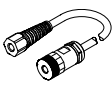
	B1	H1	H2	H3	L1	L2	L3	L4
CAFM-D4-W	97	345	188,9	3	215	89,9	38,9	3

Ordering data

Ordering data			
	Nominal operating voltage DC	Part no.	Type
	24 V	8126915	CDSA-D3-RV

Accessories

Retainer CAFM				
	Material mounting bracket	Product weight	Part no.	Type
	Powder-coated steel	749 g	8127358	CAFM-D4-W

Connecting cable NEBC					
	Degree of protection ¹⁾	Material cable sheath	Product weight	Part no.	Type
	IP65	TPE-U(PUR)	680 g	8126916	NEBC-R3Z12G20-KH-5-N-SBS-RSG17-ET-S1
			1,300 g	8126917	NEBC-R3Z12G20-KH-10-N-SBS-RSG17-ET-S1
			1,900 g	8126918	NEBC-R3Z12G20-KH-15-N-SBS-RSG17-ET-S1

¹⁾ Resistant to water, cleaning agents (alcohols and detergents), oils, greases and lubricants.