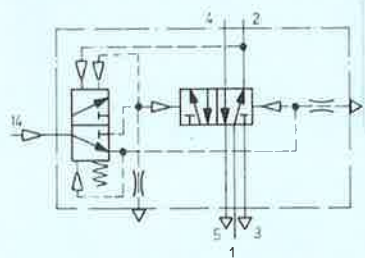


Binary reduction valve with sub-base

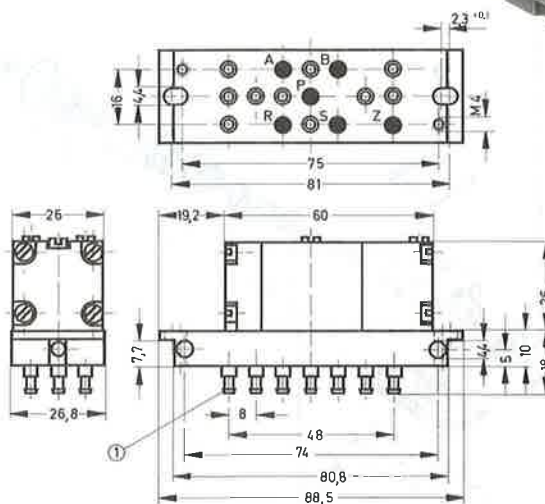
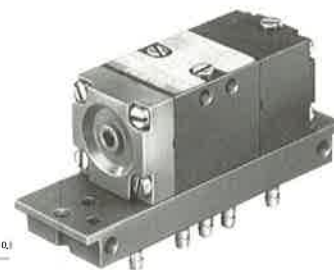
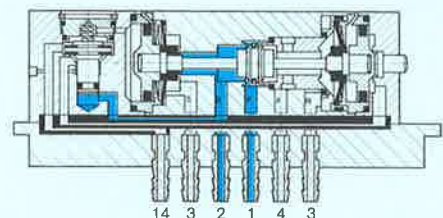
Type VLL-5-PK-3



The valve consists of a 5/2-way directional control valve and a pulse actuated shuttle valve. Pilot pressure applied at port Z shifts and holds the shuttle valve spool. When the pilot pressure is removed, pilot pressure from outlet B shifts the shuttle valve spool so the next pilot signal switches the valve back. Until this happens, the valve maintains its shifted position. Each time pilot pressure is applied at Z, output signals A and B change.

Note:

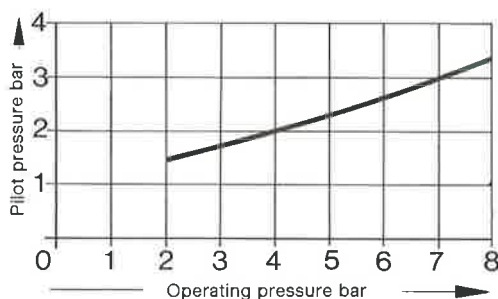
If the supply pressure at P is shut off and one or more control signals are received at Z, connection P will continue to open B when the operating pressure is received by Z, the previous position is maintained even if the operating pressure at P is restored.



① Barbed fittings for 3 mm plastic tubing

- 1 (P) = Supply port
- 4, 2 (A, B) = Working or outlet lines
- 5, 3 (R, S) = Exhaust
- 14 (Z) = Pilot line

Minimum pilot pressure as a function of operating pressure



Mounting frame for manifold mounting and control cabinet fitting, see sheet 6.430.

Order code	Part No./Type	4606 VLL-5-PK-3
Medium		Compressed air, filtered (lubricated or unlubricated)
Design		Poppet valve
Mounting		2 through-holes in sub-base, or on mounting frame
Connection	Working lines	Barbed fittings for 3 mm plastic tubing
	Pilot line	Barbed fittings for 3 mm plastic tubing
Nominal size		2.5 mm
Standard nominal flow rate (P → A)		105 l/min
Operating pressure range		2 to 8 bar
Pilot pressure range		2 to 8 bar
Response time at 6 bar		20 ms
Temperature range		0 to +60 °C
Materials		Housing: aluminium, plastic; sub-base: plastic, brass; seals: perbunan
Weight		0.130 kg

Wearing parts kit

For type	VLL-5-PK-3
Order code	104 200

