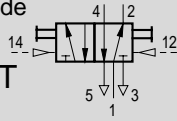


Double Pilot Valve

Detented, Manual Override

Type JH-5-1/4

JH-5-1/4-NPT

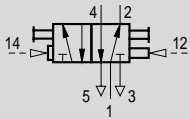


The valve is shifted by alternating pneumatic pressure at ports 14 and 12. After the signal is removed, the valve maintains its shifted position until a counter-signal is received.

Dominating Double Pilot Valve

With dominating pilot at 14 and manual override

Type JDH-5-1/4



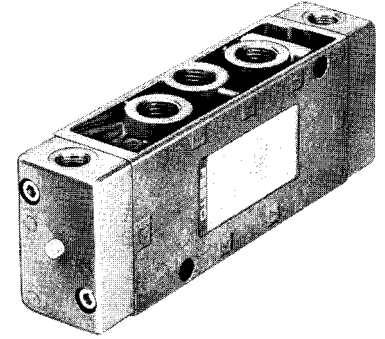
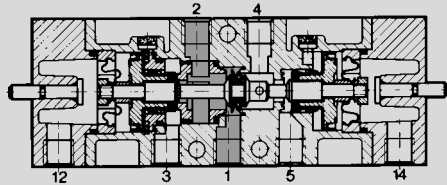
The valve is shifted by alternating pneumatic signals at connections 14 and 12. After the signal is removed, the valve maintains its shifted position until a counter-signal is received. If both pilot pressures are present and equal, the signal at port 14 dominates and the valve shifts in that direction.

For manifold mounting,

Type PAL-..., see page 451.

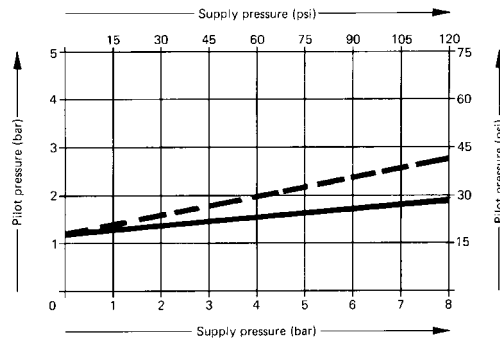
Type PRS-..., see page 452.

Example: Type JH-5-1/8

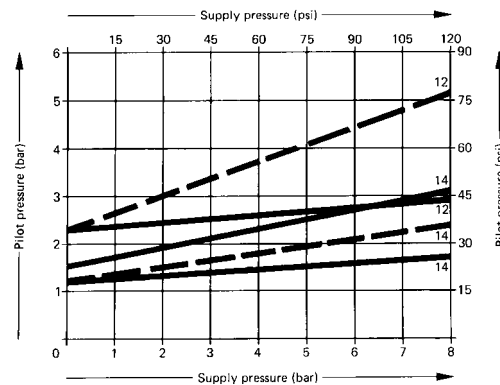


Minimum Pilot Pressure versus Supply Pressure

Type JH-5-1/4, JH-5-1/4 NPT



Type JDH-5-1/4



*Used in dominating function
 — Exhaust unthrottled
 - - Exhaust throttled

1 (P) = Supply
 4, 2 (A, B) = Outlet
 5, 3 (R, S) = Exhaust
 12, 14 (Y, Z) = Pilot

Order Number	ISO Connection	10408 JH-5-1/4	10409 JDH-5-1/4
Part No./Type	NPT Connection	10879 JH-5-1/4-NPT	-
Medium		Compressed air, filtered (lubricated or unlubricated)	
Design		Poppet valve	
Mounting		2 through-holes in housing	
Connection	Working Ports	G 1/4 ISO or 1/4" NPT	G 1/4 ISO
	Pilot Port	G 1/8 ISO or 1/8" NPT	G 1/8 ISO
Orifice Size		0.28 in / 7 mm	
C _v Factor (P → A)		1.1 C _v / 1100 l/min	
Operating Pressure Range		0 to 120 psi / 0 to 8 bar	
Pilot Pressure Range		See graph (max. 150 psi / 10 bar)	
Response Time at 90 psi / 6 bar		7 ms	7 ms, dominating function 16 ms
Temperature Range		14 to 140°F / -10 to +60°C	
Materials		Housing: die-cast aluminum, anodized; seals: Buna N	
Weight		0.726 lb / 0.330 kg	

Festo - Your Partner in Automation



1 Festo Inc.
5300 Explorer Drive
Mississauga, ON L4W 5G4
Canada

Festo Customer Interaction Center
Tel: 1 877 463 3786
Fax: 1 877 393 3786
Email: customer.service.ca@festo.com



2 Festo Pneumatic
Av. Ceylán 3,
Col. Tequesquináhuac
54020 Tlalneantla,
Estado de México

Multinational Contact Center
01 800 337 8669
ventas.mexico@festo.com



3 Festo Corporation
1377 Motor Parkway
Suite 310
Islandia, NY 11749

Festo Customer Interaction Center
1 800 993 3786
1 800 963 3786
customer.service.us@festo.com



4 Regional Service Center
7777 Columbia Road
Mason, OH 45040

Connect with us



www.festo.com/socialmedia



www.festo.com

Subject to change