

# Classic Tiger Series Power Valves

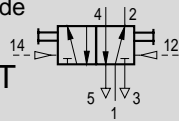
5/2 - 5 Ported, 4 Way, 2 Position Valves, G 1/8 and 1/8" NPT

## Double Pilot Valve

Detented, Manual Override

Type JH-5-1/8

JH-5-1/8-NPT

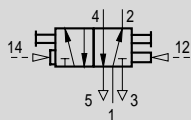


The valve is shifted by alternating pneumatic pressure at ports 14 and 12. After the signal is removed, the valve maintains its shifted position until a counter-signal is received.

## Dominating Double Pilot Valve

With dominating pilot at 14 and manual override

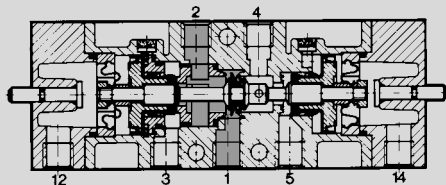
Type JDH-5-1/8



The valve is shifted by alternating pneumatic signals at connections 14 and 12. After the signal is removed, the valve maintains its shifted position until a counter-signal is received. If both pilot pressures are present and equal, the signal at port 14 dominates and the valve shifts in that direction.

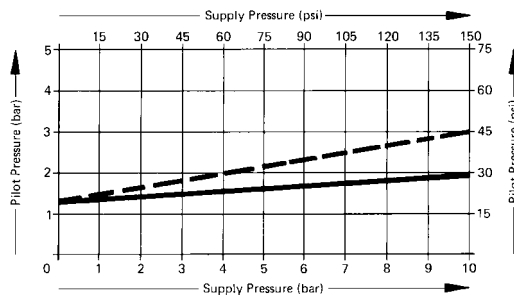
For manifold mounting,  
Type PAL-..., see page 451.  
Type PRS-..., see page 452.

Example: Type JH-5-1/8

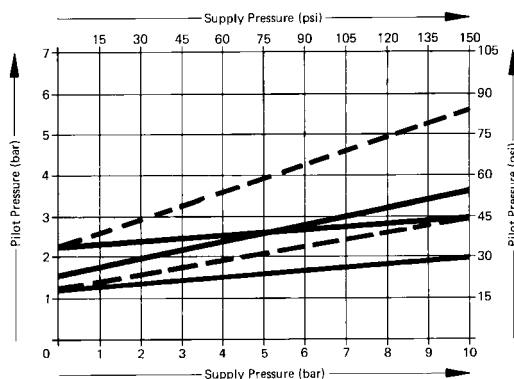


Minimum Pilot Pressure versus Supply Pressure

Type JH-5-1/8, JH-5-1/8 NPT



Type JDH-5-1/8



— Exhaust flow open  
- - Exhaust flow controlled

1 (P) = Supply  
4, 2 (A, B) = Outlet  
5, 3 (R, S) = Exhaust  
12, 14 (Y, Z) = Pilot

Order Number	ISO Connection	8823 JH-5-1/8	8824 JDH-5-1/8
Part No./Type	NPT Connection	10878 JH-5-1/8-NPT	-
Medium		Compressed air (filtered, lubricated, or unlubricated)	
Design		Poppet valve	
Mounting		3 through-holes in housing	
Connection	Working Ports	G 1/8 ISO or 1/8 NPT	G 1/8 ISO
	Pilot Port	G 1/8 ISO or 1/8 NPT	G 1/8 ISO
Orifice Size		0.20 in / 5 mm	
C <sub>v</sub> Factor (P → A)		0.6 C <sub>v</sub> / 600 l/min	
Operating Pressure Range		0 to 150 psi / 0 to 10 bar	
Pilot Pressure Range		See graph (max. 150 psi / 10 bar)	
Switching Time at 90 psi / 6 bar		7 ms	9 ms, dominating function 16 ms
Temperature Range		14 to 140°F / -10 to +60°C	
Materials		Housing: die-cast aluminum, anodized; seals: Buna N	
Weight		0.540 lb / 0.245 kg	

# Festo - Your Partner in Automation



**1 Festo Inc.**  
5300 Explorer Drive  
Mississauga, ON L4W 5G4  
Canada

**Festo Customer Interaction Center**  
Tel: 1 877 463 3786  
Fax: 1 877 393 3786  
Email: [customer.service.ca@festo.com](mailto:customer.service.ca@festo.com)



**2 Festo Pneumatic**  
Av. Ceylán 3,  
Col. Tequesquináhuac  
54020 Tlalnepantla,  
Estado de México

**Multinational Contact Center**  
01 800 337 8669  
[ventas.mexico@festo.com](mailto:ventas.mexico@festo.com)



**3 Festo Corporation**  
1377 Motor Parkway  
Suite 310  
Islandia, NY 11749

**Festo Customer Interaction Center**  
1 800 993 3786  
1 800 963 3786  
[customer.service.us@festo.com](mailto:customer.service.us@festo.com)



**4 Regional Service Center**  
7777 Columbia Road  
Mason, OH 45040

Connect with us



[www.festo.com/socialmedia](http://www.festo.com/socialmedia)



[www.festo.com](http://www.festo.com)

Subject to change