

Proximity sensors SMPO-8E, for T-slot, pneumatic

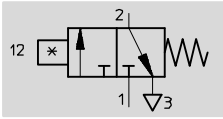


Proximity sensors SMPO-8E, for T-slot, pneumatic

Technical data

Function
3/2-way valve,
normally closed

- Pneumatic proximity sensor
- Magnetic measuring principle



Design	
Constructional design	For T-slot
Type of mounting	Insertable in the slot from above
	Via through-holes
	Via accessories
Connection direction	Lateral
Reproducibility of switching point ¹⁾	[mm] ±0.2
Switching status display	Optical

1) Only applicable to drives secured against rotation

Technical data	
Switching element function	3/2-way valve, normally closed
Operating medium	Compressed air in accordance with ISO 8573-1:2010 [6:4:4]
Note on operating/pilot medium	Operation with lubricated medium not possible
Operating pressure	[bar] 2 ... 8
Switch-on time	[ms] 22
Switch-off time	[ms] 52
Pneumatic connection	Female thread M5
Protection class	IP65

Operating and environmental conditions	
Ambient temperature	[°C] -15 ... +60
Corrosion resistance class CRC ¹⁾	2

1) Corrosion resistance class CRC 2 to Festo standard FN 940070
Moderate corrosion stress. Indoor applications in which condensation may occur. External visible parts with primarily decorative requirements for the surface and which are in direct contact with the ambient atmosphere typical for industrial applications.

Materials	
Housing	Anodised aluminium
	High-alloy steel
	PA
Note on materials	Free of copper and PTFE
	RoHS-compliant

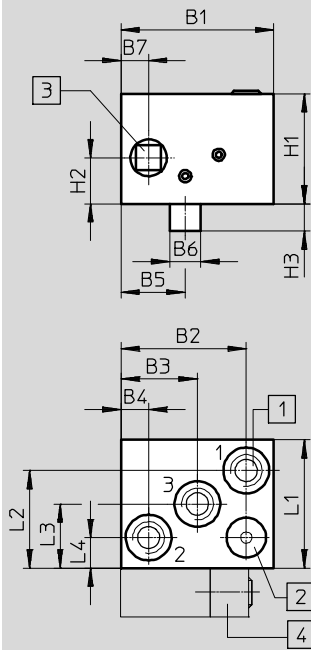
Product weights [g]	
Pneumatic proximity sensor	11

Proximity sensors SMPO-8E, for T-slot, pneumatic

Technical data

Dimensions

Download CAD data → www.festo.com

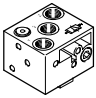


- 1 M5 for barbed fitting
- 2 Yellow LED
- 3 Max. tightening torque 0.6 Nm (NW 2.5)
- 4 Mounting kit SMB-8E

Dimensions

	B1	B2	B3	B4	B5 ±0.3	B6 ±0.05	B7 ±0.2	H1	H2	H3	L1	L2	L3	L4
SMPO-8E	25	20.5	12.5	4.5	10.5	5.1	4.5	18	7.5	4.5	21	16	10.5	5

Ordering data

	Pneumatic connection	Part No.	Type
	3/2-way valve, normally closed	178563	SMPO-8E
	Female thread M5		

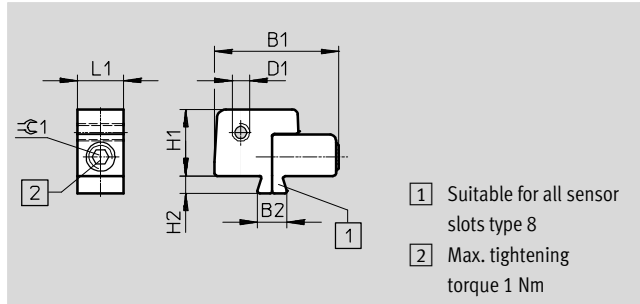
Proximity sensors SMPO-8E, for T-slot, pneumatic

Accessories



Mounting kit SMB-8E

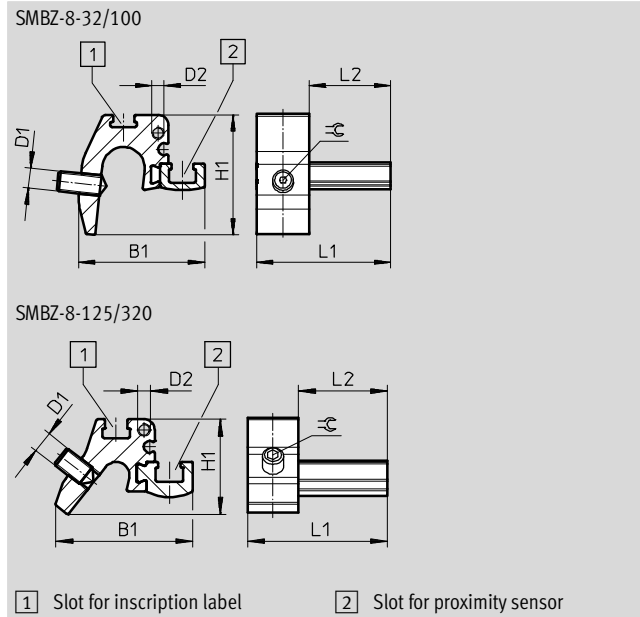
Material:
Profile: Anodised aluminium,
RoHS-compliant
Screws: High-alloy stainless steel



Dimensions and ordering data									
For piston \varnothing	B1	B2	D1	H1	H2	L1	\approx	Part No.	Type
	+0.5/-1	-0.2			+0.2	\pm 0.2			
10 ... 125	21.5	5.1	M3	11.5	3	8	2.5	178230	SMB-8E

Mounting SMBZ-8-...

Materials:
Rail: Anodised wrought aluminium alloy
Screws: High-alloy stainless steel
Free of copper and PTFE
RoHS-compliant



Dimensions and ordering data									
For piston \varnothing	B1	D1	D2	H1	L1	L2	\approx	Part No.	Type
32 ... 100	31	M5	M3	30	33	20	1.5	537806	SMBZ-8-32/100
125 ... 320	32.3			22					

Ordering data		Technical data \rightarrow Internet: qs			
		[mm]	Part No.	Type	
	Push-in fitting with connecting thread M5 for tubing O.D.	3	153302	QSM-M5-3	
		4	153304	QSM-M5-4	
		6	153306	QSM-M5-6	
	Push-in L-fitting with connecting thread M5 for tubing O.D.	3	153331	QSML-M5-3	
		4	153333	QSML-M5-4	
		6	153335	QSML-M5-6	