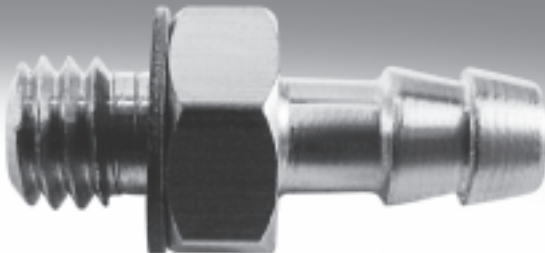




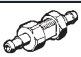


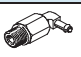

Barbed fittings



# Barbed fittings






Product range overview

FESTO

Design	Version	Type	Connection D1				Connection D2		→ Page/ Internet
			M thread	G thread	Barbed connector	Tubing I.D.	Barbed connector	Tubing I.D.	
Straight design	<b>Barbed fitting with male thread and external hex</b>								
		N	M5	–	–	–	3.6	3	6
							4.8	4	
	<b>Barbed fitting with male thread and external hex</b>								
		CN	M3	–	–	–	2.6; 3.4	2, 3	6
			M5	–			2.95; 3.6; 4.8	2, 3, 4	
			–	G1/8			3.6; 4.8; 7	3, 4, 6	
			–	G1/4			4.8; 7	4, 6	
			–	G3/8			7	6	
	<b>Barbed bulkhead fitting</b>								
		SCN	–	–	2.95	2	–	–	7
					3.6	3			
					4.8	4			
					7	6			
	<b>Barbed tubing connector</b>								
	RTU	–	–	2.95	2	2.95	2	7	
					3.6	3	2.95		2
					3.6	3	3.6		3
					3.6	3	4.8		4
					4.8	4	4.8		4
					4.8	4	7		6
					7	6	7		6
L-shape	<b>Barbed L-fitting with male thread – rotatable 360°</b>								
		LCN	M3	–	–	–	2.95; 3.6	2, 3	8
			M5	–			2.95; 3.6; 4.8	2, 3, 4	
			–	G1/8			3.6; 4.8; 7	3, 4, 6	
			–	G1/4			4.8; 7	4, 6	
			–	G3/8			7	6	
	<b>Barbed L-fitting with male thread – extended housing section rotatable 360°</b>								
		LCNH	M5	–	–	–	2.95; 3.6; 4.8	2, 3, 4	9
			–	G1/8			3.6; 4.8; 7	3, 4, 6	
			–	G1/4			4.8; 7	4, 6	
			–	G3/8			7	6	
	<b>Barbed L-connector</b>								
	L-PK	–	–	2.95	2	–	–	9	
					3.6	3			
					4.8	4			
					7	6			


# Barbed fittings

Product range overview

Design	Version	Type	Connection D1				Connection D2		→ Page/ Internet		
			M thread	G thread	Barbed connector	Tubing I.D.	Barbed connector	Tubing I.D.			
T-shape	<b>Barbed T-fitting with male thread – rotatable 360°</b>										
		TCN	M3		-	-	2.95; 3.6	2, 3	10		
			M5				2.95; 3.6; 4.8	2, 3, 4			
				G1/8			3.6; 4.8; 7	3, 4, 6			
				G1/4			4.8; 7	4, 6			
				G3/8			7	6			
	<b>Barbed T-connector</b>										
		T-PK	-	-	-	-	2.95	2	-	-	10
							3.6	3			
							4.8	4			
				7			6				
V-shape	<b>Barbed V-connector</b>										
		V-PK	-	-	-	-	2.95	2	-	-	11
							3.6	3			
							4.8	4			
				7			6				
Y-shape	<b>Barbed Y-connector</b>										
		Y-PK	-	-	-	-	2.95	2	-	-	11
							3.6	3			
							4.8	4			
				7			6				
	<b>Barbed T-connector</b>										
		FCN	-	-	-	-	2.95	2	2.95	2	12
							3.6	3	3.6	3	
							3.6	3	2.95	2	
							4.8	4	4.8	4	
							4.8	4	3.6	3	
							7	6	7	6	
				7			6	4.8	4		



# Barbed fittings CRCN, stainless steel

Product range overview

Design	Version	Type	Connection D1				Connection D2		→ Page/ Internet
			M thread	G thread	Barbed connector	Tubing I.D.	Barbed connector	Tubing I.D.	
Straight design		CRCN	Barbed fitting with male thread and external hex – stainless steel						
			M5	–	–	–	2.95; 3.6; 4.8	2, 3, 4	13
				G1/8			3.6; 4.8; 7	3, 4, 6	
				G1/4			4.8; 7	4, 6	
				G3/8			7	6	

# Barbed hose fittings C-P/N-P, for hose clip

Product range overview

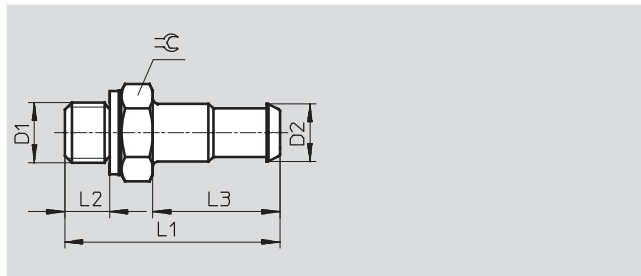
Design	Version	Type	Connection D1				Connection D2		→ Page/ Internet
			M thread	G thread	Barbed connector	Tubing I.D.	Barbed connector	Tubing I.D.	
<b>Barbed hose fitting</b>									
	C-...-P	-	G 1/8	-	-	7	6	14	
			G 1/4			7; 10	6, 9		
			G 3/8			7; 10	6, 9		
			G 1/2			14.8	13		
<b>Barbed hose fitting with sealing ring (aluminium and brass design)</b>									
	N-...-P N-...-MS	-	G 1/8	-	-	7	6	15	
			G 1/4			7; 10	6, 9		
			G 3/8			7; 10; 14.8	6, 9, 13		
			G 1/2			10.3; 14.8	9, 13		
			G 3/4			14.8; 20.8	13, 19		
<b>Hose clip to DIN 3017</b>									
	SK							16	

# Barbed fittings N/CN

Technical data

## Barbed fitting N-...-PK with sealing ring

Material:  
Brass

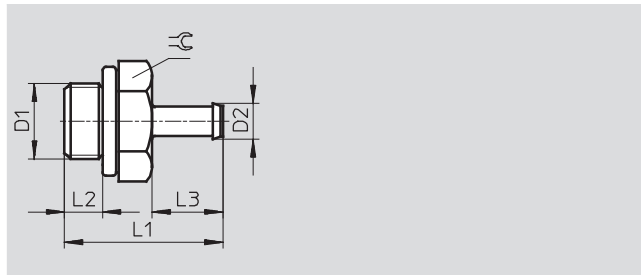


Dimensions and ordering data											
Connection	Nominal size	Barbed connector	For tubing I.D.	L1	L2	L3	≈C	Weight	Part No.	Type	PU <sup>1)</sup>
D1	[mm]	D2						[g]			
M5	2.5	3.6	3	16	3.5	8.5	7	1	4446	N-M5-PK-3	10
	2.5	4.8	4	18	3.5	10.5	7	2	4902	N-M5-PK-4	10

1) Packaging unit quantity

## Barbed fitting CN-...-PK with sealing ring

Material:  
M3 thread: High-alloy stainless steel  
M5 thread: Steel  
G thread: Aluminium



Dimensions and ordering data											
Connection	Nominal size	Barbed connector	For tubing I.D.	L1	L2	L3	≈C	Part No.	Type	PU <sup>1)</sup>	
D1	[mm]	D2									
<b>M thread</b>											
M3	1.5	2.6	2	10	3	5	4.5	15871	CN-M3-PK-2	10	
	1.5	3.4	3	11	3	6	4.5	15872	CN-M3-PK-3	10	
M5	1.5	2.95	2	13.8	3.8	6	7	19521	CN-M5-PK-2	10	
	2.5	3.6	3	17.5	3.8	9.7	7	12255	CN-M5-PK-3	10	
	2.5	4.8	4	19.5	3.8	11.7	7	12256	CN-M5-PK-4	10	
<b>G thread</b>											
G <sup>1</sup> / <sub>8</sub>	2.5	3.6	3	20.2	4.9	9.7	13	11944	CN- <sup>1</sup> / <sub>8</sub> -PK-3	10	
	3.2	4.8	4	22.2	4.9	11.7	13	11945	CN- <sup>1</sup> / <sub>8</sub> -PK-4	10	
	5.3	7	6	24.5	4.9	14	13	11946	CN- <sup>1</sup> / <sub>8</sub> -PK-6	10	
G <sup>1</sup> / <sub>4</sub>	3.2	4.8	4	24.7	5.8	11.7	17	11947	CN- <sup>1</sup> / <sub>4</sub> -PK-4	10	
	5.3	7	6	27	5.8	14	17	11948	CN- <sup>1</sup> / <sub>4</sub> -PK-6	10	
G <sup>3</sup> / <sub>8</sub>	5.3	7	6	28	6.8	14	19	11949	CN- <sup>3</sup> / <sub>8</sub> -PK-6	10	

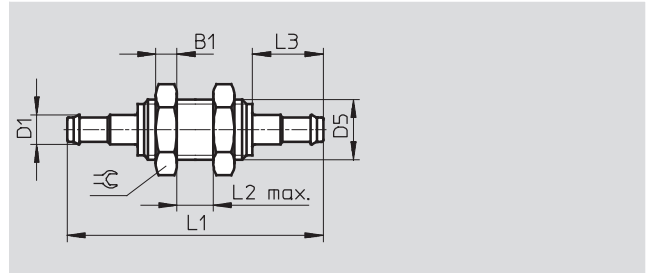
1) Packaging unit quantity

# Barbed fittings N/CN

Technical data

## Barbed bulkhead fitting SCN-PK

Material:  
Aluminium



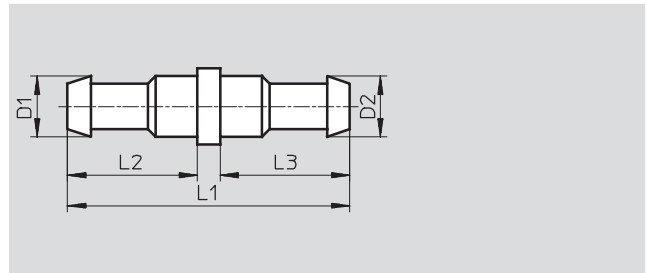
Dimensions and ordering data												
Barbed connector D1	Nominal size [mm]	For tubing I.D.	D5	B1	L1	L2	L3	∅	Weight [g]	Part No.	Type	PU <sup>1)</sup>
2.95	1.5	2	M4	2.2	23.4	6	6	7	1	19528	SCN-PK-2	10
3.6	1.9	3	M6x0.75	3.2	35.3	8	9.7	10	4	11972	SCN-PK-3	10
4.8	2.8	4	M10x1	3.5	42.4	10	11.7	13	7	11973	SCN-PK-4	10
7	4.8	6	M12x1	4	48	10	14	17	10	11974	SCN-PK-6	10

1) Packaging unit quantity

## Barbed tubing connector RTU-PK

Material:  
Brass

Note on materials:  
Conforms to RoHS



Dimensions and ordering data											
Barbed connector		Nominal size [mm]	For tubing I.D.		L1	L2	L3	Weight [g]	Part No.	Type	PU <sup>1)</sup>
D1	D2		D1	D2							
2.95	2.95	1.5	2	2	14	6	6	1	19541	RTU-PK-2/2-B	10
3.6	2.95	1.5	3	2	17.7	9.7	6	1	19542	RTU-PK-3/2	10
3.6	3.6	2.5	3	3	19	8.5	8.5	1	4805	RTU-PK-3/3	10
3.6	4.8	2.5	3	4	20	8.5	10.5	2	4499	RTU-PK-3/4	10
4.8	4.8	3.4	4	4	23	10.5	10.5	2	4806	RTU-PK-4/4	10
4.8	7	3.4	4	6	25.5	10.5	13	2	7604	RTU-PK-4/6	10
7	7	5.3	6	6	28	13	13	3	7605	RTU-PK-6/6	10

1) Packaging unit quantity

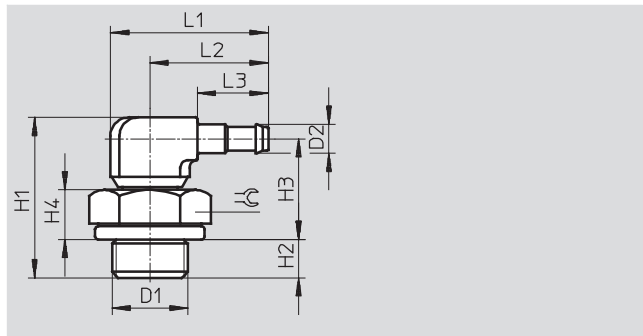
# Barbed fittings N/CN

Technical data



**Barbed L-fitting LCN-...-PK**  
360° rotatable

Material:  
M3 thread: High-alloy steel, die-cast zinc  
M5 thread: Steel, die-cast zinc  
G thread: Aluminium, die-cast zinc



Dimensions and ordering data															
Connection	Nominal size	Barbed connector	For tubing I.D.	H1	H2	H3	H4	L1	L2	L3	∓	Weight	Part No.	Type	PU <sup>1)</sup>
D1	[mm]	D2										[g]			
<b>M thread</b>															
M3	1.3	2.95	2	14	2.8	9.2	3.0	12.2	9.6	6	4.5	2	30491	LCN-M3-PK-2-B	10
	2.0	3.6	3	15.2	2.8	9.8	3.0	15.9	13.3	9.7	4.5	2	30982	LCN-M3-PK-3	10
M5	1.3	2.95	2	16	3.8	10.2	4.0	12.2	9.6	6	7	4	19523	LCN-M5-PK-2	10
	2.0	3.6	3	20.1	3.8	13.7	4.0	18.7	14.7	9.7	7	5	12257	LCN-M5-PK-3	10
	2.9	4.8	4	21.4	3.8	13.9	4.0	20.7	16.7	11.7	7	6	12258	LCN-M5-PK-4	10
<b>G thread</b>															
G <sup>1</sup> / <sub>8</sub>	2.0	3.6	3	21.2	4.9	13.7	5.6	24	17.5	9.7	13	9	11955	LCN- <sup>1</sup> / <sub>8</sub> -PK-3	10
	2.9	4.8	4	22.55	4.9	14.15	5.6	26	19.5	11.7	13	10	11956	LCN- <sup>1</sup> / <sub>8</sub> -PK-4	10
	4.9	7	6	24.45	4.9	15.15	5.6	28.5	22	14.2	13	11	11957	LCN- <sup>1</sup> / <sub>8</sub> -PK-6	10
G <sup>1</sup> / <sub>4</sub>	2.9	4.8	4	25.05	5.8	15.75	7.2	26	19.5	11.7	17	13	12958	LCN- <sup>1</sup> / <sub>4</sub> -PK-4	10
	4.9	7	6	26.95	5.8	16.75	7.2	28.5	22	14.2	17	15	12959	LCN- <sup>1</sup> / <sub>4</sub> -PK-6	10
G <sup>3</sup> / <sub>8</sub>	4.9	7	6	27.95	6.8	16.75	7.2	28.5	22	14.2	19	20	12960	LCN- <sup>3</sup> / <sub>8</sub> -PK-6	10

1) Packaging unit quantity



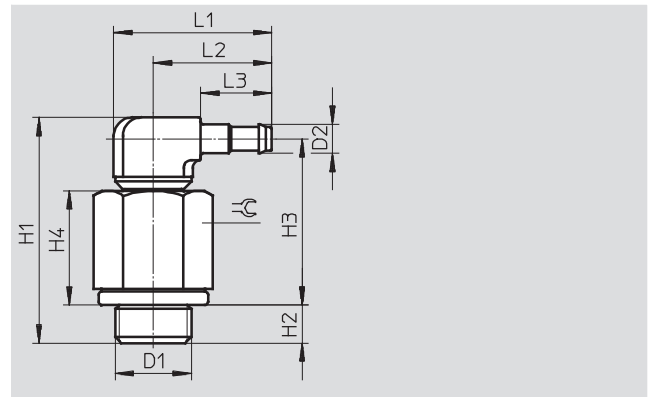
# Barbed fittings N/CN

Technical data



**Barbed L-fitting LCNH-...-PK**  
360° rotatable

Material:  
M thread: Steel, die-cast zinc  
G thread: Aluminium, die-cast zinc

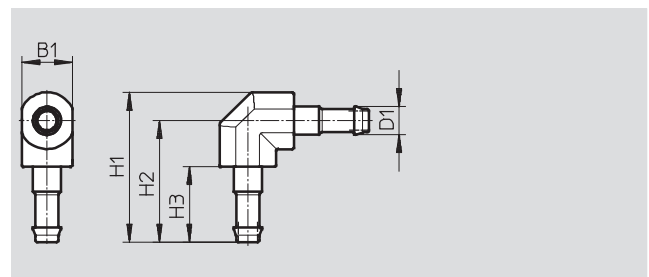


Dimensions and ordering data																
Connection	Nominal size	Barbed connector	For tubing I.D.	H1	H2	H3	H4	L1	L2	L3	⌀C	Weight	Part No.	Type	PU <sup>1)</sup>	
D1	[mm]	D2										[g]				
<b>M thread</b>																
M5	1.3	2.95	2	26.9	3.8	21.1	14.9	12.2	9.6	6	7	8	35982	LCNH-M5-PK-2	10	
	2.0	3.6	3	28.7	3.8	22.3	12.6	18.7	14.7	9.7	7	9	35983	LCNH-M5-PK-3	10	
	2.9	4.8	4	30.2	3.8	22.9	12.6	20.7	16.7	11.7	7	10	35984	LCNH-M5-PK-4	10	
<b>G thread</b>																
G <sup>1</sup> / <sub>8</sub>	2.0	3.6	3	31.8	4.9	24.3	16.2	24.0	17.5	9.7	13	13	35985	LCNH- <sup>1</sup> / <sub>8</sub> -PK-3	10	
	2.9	4.8	4	33.15	4.9	24.75	16.2	26	19.5	11.7	13	14	35986	LCNH- <sup>1</sup> / <sub>8</sub> -PK-4	10	
	4.9	7	6	35.05	4.9	25.75	16.2	28.5	22	14.2	13	16	35987	LCNH- <sup>1</sup> / <sub>8</sub> -PK-6	10	
G <sup>1</sup> / <sub>4</sub>	2.9	4.8	4	35.65	5.8	26.35	17.8	26	19.5	11.7	17	21	35988	LCNH- <sup>1</sup> / <sub>4</sub> -PK-4	10	
	4.9	7	6	37.55	5.8	27.35	17.8	28.5	22	14.2	17	22	35989	LCNH- <sup>1</sup> / <sub>4</sub> -PK-6	10	
G <sup>3</sup> / <sub>8</sub>	4.9	7	6	38.55	6.8	27.35	17.8	28.5	22	14.2	19	29	35990	LCNH- <sup>3</sup> / <sub>8</sub> -PK-6	10	

1) Packaging unit quantity

**Barbed L-connector L-PK**

Material:  
Brass, polyacetate



Dimensions and ordering data											
Barbed connector	Nominal size	For tubing I.D.	B1	H1	H2	H3	Weight	Part No.	Type	PU <sup>1)</sup>	
D1	[mm]						[g]				
2.95	1.5	2	4	12.2	10.2	6	1	19539	L-PK-2	10	
3.6	2.5	3	6.5	19.25	15.6	9.7	1	7473	L-PK-3	10	
4.8	3.4	4	7.8	23.1	18.7	11.7	2	9584	L-PK-4	10	
7	5.3	6	10.4	31.5	26.3	14	7	150012	L-PK-6	10	

1) Packaging unit quantity

# Barbed fittings N/CN

Technical data



## Barbed T-fitting TCN-...-PK

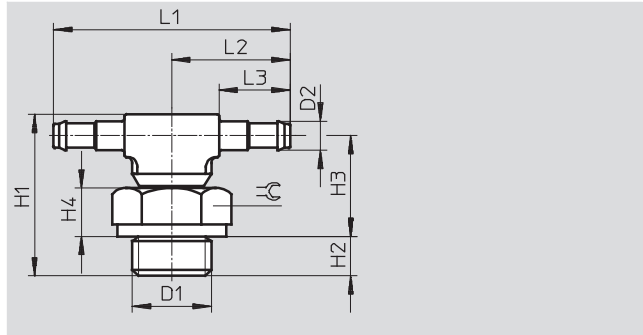
360° rotatable

Material:

M3 thread: High-alloy stainless steel,  
die-cast zinc

M5 thread: Steel, die-cast zinc

G thread: Aluminium, die-cast zinc



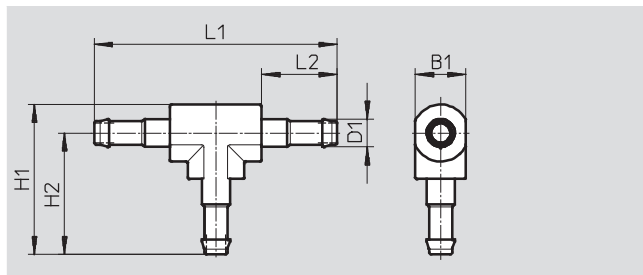
Dimensions and ordering data														
Connection	Nominal size	Barbed connector	For tubing I.D.	H1	H2	H3	H4	L1	L2	L3	±C	Part No.	Type	PU <sup>1)</sup>
D1	[mm]	D2												
<b>M thread</b>														
M3	1.3	2.95	2	14	2.8	9.2	3.0	19.2	9.6	6	4.5	30492	TCN-M3-PK-2	10
	2.0	3.6	3	15.2	2.8	9.8	3.0	26.6	13.3	9.7	4.5	30983	TCN-M3-PK-3	10
M5	1.3	2.95	2	16	3.8	10.2	4.0	19.2	9.6	6	7	19525	TCN-M5-PK-2	10
	2.0	3.6	3	20.1	3.8	13.7	4.0	29.4	14.7	9.7	7	12259	TCN-M5-PK-3	10
	2.9	4.8	4	18.1	3.8	14.3	4.0	33.4	16.7	11.7	7	12432	TCN-M5-PK-4	10
<b>G thread</b>														
G <sup>1</sup> / <sub>8</sub>	2.0	3.6	3	21.2	4.9	13.7	5.6	35	17.5	9.7	13	11961	TCN- <sup>1</sup> / <sub>8</sub> -PK-3	10
	2.9	4.8	4	22.55	4.9	14.15	5.6	39	19.5	11.7	13	11962	TCN- <sup>1</sup> / <sub>8</sub> -PK-4	10
	4.9	7	6	24.45	4.9	15.15	5.6	44	22	14.2	13	11963	TCN- <sup>1</sup> / <sub>8</sub> -PK-6	10
G <sup>1</sup> / <sub>4</sub>	2.9	4.8	4	25.05	5.8	15.75	7.2	39	19.5	11.7	17	11964	TCN- <sup>1</sup> / <sub>4</sub> -PK-4	10
	4.9	7	6	26.95	5.8	16.75	7.2	44	22	14.2	17	11965	TCN- <sup>1</sup> / <sub>4</sub> -PK-6	10
G <sup>3</sup> / <sub>8</sub>	4.9	7	6	27.95	6.8	16.75	7.2	44	22	14.2	19	11966	TCN- <sup>3</sup> / <sub>8</sub> -PK-6	10

1) Packaging unit quantity

## Barbed T-connector T-PK

Material:

Brass, polyacetate



Dimensions and ordering data											
Barbed connector	Nominal size	For tubing I.D.	B1	H1	H2	L1	L2	Weight	Part No.	Type	PU <sup>1)</sup>
D1	[mm]							[g]			
2.95	1.5	2	4	12.2	10.2	20.4	6	1	30919	T-PK-2	10
3.6	2.5	3	6.5	19.25	15.6	31.2	9.7	2	7267	T-PK-3	10
4.8	3.4	4	7.8	23	18.7	37.4	11.7	3	9585	T-PK-4	10
7	5.3	6	10.4	31.5	26.3	52.6	14	11	150015	T-PK-6	10

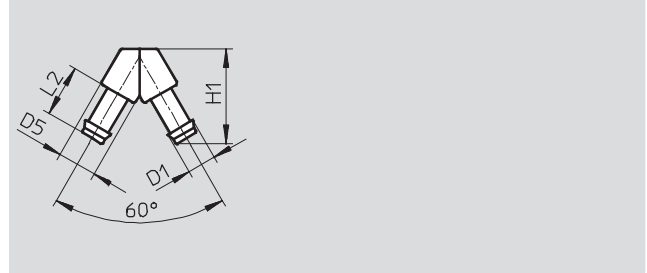
1) Packaging unit quantity

# Barbed fittings N/CN

Technical data

## Barbed V-connector V-PK

Material:  
Brass, polyacetate

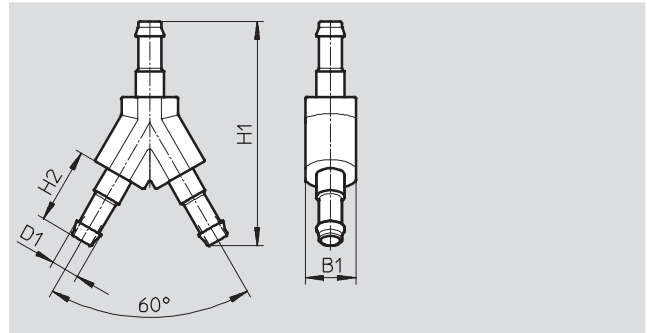


Dimensions and ordering data									
Barbed connector D1	Nominal size [mm]	For tubing I.D.	D5	H1	L2	Weight [g]	Part No.	Type	PU <sup>2)</sup>
2.95	1.5	2	4	11.3	6	1	30918	V-PK-2 <sup>1)</sup>	10
3.6	2.5	3	6.5	17.6	9.7	1	7268	V-PK-3	10
4.8	3.4	4	7.8	21	11.7	2	30920	V-PK-4	10
7	5.3	6	10.4	29.8	14	8	150014	V-PK-6	10

- 1) Conforms to RoHS
- 2) Packaging unit quantity

## Barbed Y-connector Y-PK

Material:  
Brass, polyacetate



Dimensions and ordering data									
Barbed connector D1	Nominal size [mm]	For tubing I.D.	B1	H1	H2	Weight [g]	Part No.	Type	PU <sup>2)</sup>
2.95	1.5	2	4	18	6	1	19540	Y-PK-2 <sup>1)</sup>	10
3.6	2.5	3	6.5	28.8	9.7	2	7269	Y-PK-3	10
4.8	3.4	4	7.8	34.5	11.7	3	9586	Y-PK-4	10
7	5.3	6	10.4	49.2	14	12	150013	Y-PK-6	10

- 1) Conforms to RoHS
- 2) Packaging unit quantity

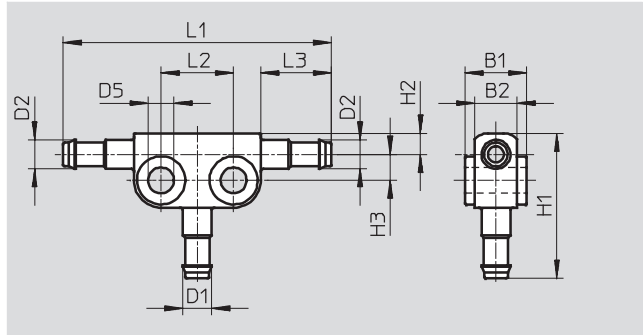
# Barbed fittings N/CN

Technical data



## Barbed T-connector FCN

Material:  
Die-cast zinc



Dimensions and ordering data																		
Connection		Nominal size [mm]	For tubing I.D.		B1	B2	D5	H1	H2	H3	L1	L2	L3	Weight [g]	Part No.	Type	PU <sup>1)</sup>	
D1	D2		D1	D2														
2.95	2.95	1.3	2	2	6	4	3.2	15.7	3.1	2.6	28	8	6	5	19527	FCN-3-PK-2-B	10	
3.6	3.6	2	3	3	8.4	5.2	4.3	21.6	3.5	3.9	38.4	10	9.7	8	14768	FCN-3-PK-3	10	
2.95	3.6	2/1.3	2	3	8.4	5.2	4.3	17.9	3.5	3.9	38.4	10	9.7	8	31314	FCN-3-PK-3/2	10	
4.8	4.8	2.9	4	4	10.2	7	4.3	24	3.5	4.3	44.4	12	11.7	12	14769	FCN-3-PK-4	10	
3.6	4.8	2.9/2	3	4	10.2	7	4.3	22	3.5	4.3	44.4	12	11.7	12	31315	FCN-3-PK-4/3	10	
7	7	4.9	6	6	12	8.8	4.3	28.4	4.4	5.3	49.4	12	14.2	16	14770	FCN-3-PK-6	10	
4.8	7	4.9/2.9	4	6	12	8.8	4.3	25.9	4.4	5.3	49.4	12	14.2	16	31316	FCN-3-PK-6/4	10	

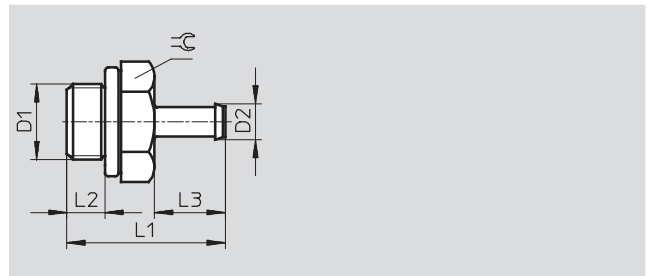
1) Packaging unit quantity

# Barbed fittings CRCN, stainless steel

Technical data

**Barbed fitting CRCN**  
with sealing ring

Material:  
High-alloy stainless steel



Dimensions and ordering data										
Connection	Nominal size	Barbed connector	For tubing I.D.	L1	L2	L3	⌀	Part No.	Type	PU <sup>1)</sup>
D1	[mm]	D2								
M thread										
M5	1.5	2.95	2	13.8	3.8	6	7	<b>30985</b>	<b>CRCN-M5-PK-2</b>	<b>10</b>
	2.5	3.6	3	17.5	3.8	9.7	7	<b>13967</b>	<b>CRCN-M5-PK-3</b>	<b>10</b>
	2.5	4.8	4	19.5	3.8	11.7	7	<b>13968</b>	<b>CRCN-M5-PK-4</b>	<b>10</b>
G thread										
G <sup>1</sup> / <sub>8</sub>	2.5	3.6	3	20.2	4.9	9.7	13	<b>13969</b>	<b>CRCN-<sup>1</sup>/<sub>8</sub>-PK-3</b>	<b>10</b>
	3.2	4.8	4	22.2	4.9	11.7	13	<b>13970</b>	<b>CRCN-<sup>1</sup>/<sub>8</sub>-PK-4</b>	<b>10</b>
	5.3	7	6	24.5	4.9	14	13	<b>13971</b>	<b>CRCN-<sup>1</sup>/<sub>8</sub>-PK-6</b>	<b>10</b>
G <sup>1</sup> / <sub>4</sub>	3.2	4.8	4	24.7	5.8	11.7	17	<b>13972</b>	<b>CRCN-<sup>1</sup>/<sub>4</sub>-PK-4</b>	<b>1</b>
	5.3	7	6	27	5.8	14	17	<b>13973</b>	<b>CRCN-<sup>1</sup>/<sub>4</sub>-PK-6</b>	<b>1</b>
G <sup>3</sup> / <sub>8</sub>	5.3	7	6	28	6.8	14	19	<b>13974</b>	<b>CRCN-<sup>3</sup>/<sub>8</sub>-PK-6</b>	<b>1</b>

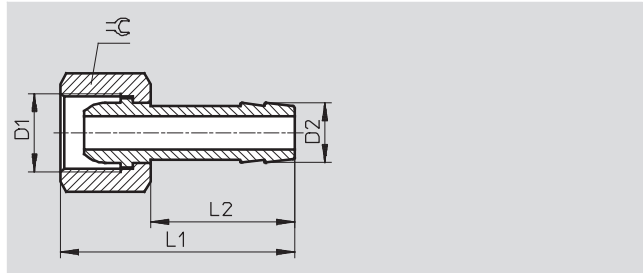
1) Packaging unit quantity

# Barbed hose fittings C-P/N-P, for hose clip

Technical data

## Barbed hose fitting C-...-P

Material:  
Brass  
Aluminium design



Dimensions and ordering data										
Connection	Nominal size	Connection	For tubing I.D.	L1	L2	≈G	Weight	Part No.	Type	PU <sup>1)</sup>
D1	[mm]	D2					[g]			
G thread										
G <sup>1</sup> / <sub>8</sub>	4	7	6	36	24	13	18	2021	C-1/8-P-6	10
G <sup>1</sup> / <sub>4</sub>	4.5	7	6	39	24	17	28	2022	C-1/4-P-6	10
	5.5	10	9	39	24	17	34	2023	C-1/4-P-9	10
G <sup>3</sup> / <sub>8</sub>	4.5	7	6	39	24	19	31	2024	C-3/8-P-6	1
	6.5	10	9	39	24	19	34	2025	C-3/8-P-9	1
G <sup>1</sup> / <sub>2</sub>	11	14.8	13	50	30	24	64	2026	C-1/2-P-13	1

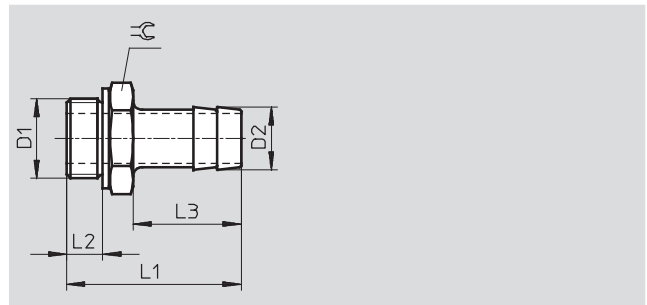
1) Packaging unit quantity

# Barbed hose fittings C-P/N-P, for hose clip

Technical data

**Barbed hose fitting N-...-P**  
with sealing ring

Material:  
N...-P: Blue anodised aluminium  
N...-P...MS: Brass



Dimensions and ordering data											
Connection	Nominal size [mm]	Barbed connector D2	For tubing I.D.	L1	L2	L3	≈C	Weight [g]	Part No.	Type	PU <sup>2)</sup>
<b>G thread</b>											
G <sup>1</sup> / <sub>8</sub>	4.5	7	6	34.7	4.9	24.2	13	14	3605	N- <sup>1</sup> / <sub>8</sub> -P-6	10
G <sup>1</sup> / <sub>4</sub>	4.5	7	6	37.1	5.8	24.1	17	21	3606	N- <sup>1</sup> / <sub>4</sub> -P-6	10
	6.5	10	9	37.1	5.8	24.1	17	24	3607	N- <sup>1</sup> / <sub>4</sub> -P-9	10
G <sup>3</sup> / <sub>8</sub>	4.5	7	6	38.1	6.8	24.1	19	34	3608	N- <sup>3</sup> / <sub>8</sub> -P-6	10
	7.6	10	9	38.1	6.8	24.1	19	31	3609	N- <sup>3</sup> / <sub>8</sub> -P-9	10
	11	14.8	13	45.4	6.8	30	19	35	36160	N- <sup>3</sup> / <sub>8</sub> -P-13	1
G <sup>1</sup> / <sub>2</sub>	8	10.3	9	39.5	8.15	24	24	61	3610	N- <sup>1</sup> / <sub>2</sub> -P-9	1
	11	14.8	13	45.5	8.15	30	24	63	3611	N- <sup>1</sup> / <sub>2</sub> -P-13	1
G <sup>3</sup> / <sub>4</sub>	11	14.8	13	50	9.05	30	32	113	3612	N- <sup>3</sup> / <sub>4</sub> -P-13	1
	16.5	20.8	19	56	9.05	36	32	117	3613	N- <sup>3</sup> / <sub>4</sub> -P-19 <sup>1)</sup>	1
<b>R thread</b>											
R1	16.5	20.8	19	68.6	-	36	34	-	572260	N-1-P-19 <sup>1)</sup>	1
<b>NPT thread</b>											
<sup>3</sup> / <sub>4</sub>	16.5	20.8	19	66.68	-	36	30.17	-	564848	N- <sup>3</sup> / <sub>4</sub> -P-19-NPT <sup>1)</sup>	1
1	16.5	20.8	19	74	-	36	34	-	572243	N-1-P-19-NPT <sup>1)</sup>	1

1) RoHS-compliant  
2) Packaging unit quantity

## Hose clips SK

Technical data

FESTO

Hose clip SK  
to DIN 3017

The hose clips are equipped with  
a worm thread. Band width 9 mm.

Material:  
Steel



Dimensions and ordering data				
Clamping range $\varnothing$ [mm]	Weight [g]	Part No.	Type	PU <sup>1)</sup>
10 ... 16	7	9274	SK-10-16	10
16 ... 27	12	9275	SK-16-27	10
20 ... 32	13	9276	SK-20-32	10

1) Packaging unit quantity



# Product Range and Company Overview

## A Complete Suite of Automation Services

Our experienced engineers provide complete support at every stage of your development process, including: conceptualization, analysis, engineering, design, assembly, documentation, validation, and production.



**Custom Automation Components**  
Complete custom engineered solutions



**Custom Control Cabinets**  
Comprehensive engineering support and on-site services



**Complete Systems**  
Shipment, stocking and storage services

## The Broadest Range of Automation Components

With a comprehensive line of more than 30,000 automation components, Festo is capable of solving the most complex automation requirements.



**Electromechanical**  
Electromechanical actuators, motors, controllers & drives



**Pneumatics**  
Pneumatic linear and rotary actuators, valves, and air supply



**PLCs and I/O Devices**  
PLC's, operator interfaces, sensors and I/O devices

## Supporting Advanced Automation... As No One Else Can!

Festo is a leading global manufacturer of pneumatic and electromechanical systems, components and controls for industrial automation, with more than 12,000 employees in 56 national headquarters serving more than 180 countries. For more than 80 years, Festo has continuously elevated the state of manufacturing with innovations and optimized motion control solutions that deliver higher performing, more profitable automated manufacturing and processing equipment. Our dedication to the advancement of automation extends beyond technology to the education and development of current and future automation and robotics designers with simulation tools, teaching programs, and on-site services.

## Quality Assurance, ISO 9001 and ISO 14001 Certifications

Festo Corporation is committed to supply all Festo products and services that will meet or exceed our customers' requirements in product quality, delivery, customer service and satisfaction.

To meet this commitment, we strive to ensure a consistent, integrated, and systematic approach to management that will meet or exceed the requirements of the ISO 9001 standard for Quality Management and the ISO 14001 standard for Environmental Management.



© Copyright 2008, Festo Corporation. While every effort is made to ensure that all dimensions and specifications are correct, Festo cannot guarantee that publications are completely free of any error, in particular typing or printing errors. Accordingly, Festo cannot be held responsible for the same. For Liability and Warranty conditions, refer to our "Terms and Conditions of Sale", available from your local Festo office. All rights reserved. No part of this publication may be reproduced, distributed, or transmitted in any form or by any means, electronic, mechanical, photocopying or otherwise, without the prior written permission of Festo. All technical data subject to change according to technical update.



Printed on recycled paper at New Horizon Graphic, Inc., FSC certified as an environmentally friendly printing plant.

# Festo North America

## Festo Regional Contact Center

5300 Explorer Drive  
Mississauga, Ontario L4W 5G4  
Canada

### USA Customers:

For ordering assistance,

**Call:** 1.800.99.FESTO (1.800.993.3786)

**Fax:** 1.800.96.FESTO (1.800.963.3786)

**Email:** [customer.service@us.festo.com](mailto:customer.service@us.festo.com)

For technical support,

**Call:** 1.866.GO.FESTO (1.866.463.3786)

**Fax:** 1.800.96.FESTO (1.800.963.3786)

**Email:** [product.support@us.festo.com](mailto:product.support@us.festo.com)

### Canadian Customers:

**Call:** 1.877.GO.FESTO (1.877.463.3786)

**Fax:** 1.877.FX.FESTO (1.877.393.3786)

**Email:** [festo.canada@ca.festo.com](mailto:festo.canada@ca.festo.com)

---

## USA Headquarters

Festo Corporation  
395 Moreland Road  
P.O. Box 18023  
Hauppauge, NY 11788, USA  
[www.festo.com/us](http://www.festo.com/us)

---

## USA Sales Offices

### Appleton

North 922 Tower View Drive, Suite N  
Greenville, WI 54942, USA

### Boston

120 Presidential Way, Suite 330  
Woburn, MA 01801, USA

### Chicago

1441 East Business Center Drive  
Mt. Prospect, IL 60056, USA

### Dallas

1825 Lakeway Drive, Suite 600  
Lewisville, TX 75057, USA

### Detroit – Automotive Engineering Center

2601 Cambridge Court, Suite 320  
Auburn Hills, MI 48326, USA

### New York

395 Moreland Road  
Hauppauge, NY 11788, USA

### Silicon Valley

4935 Southfront Road, Suite F  
Livermore, CA 94550, USA

## United States



**USA Headquarters, East:** Festo Corp., 395 Moreland Road, Hauppauge, NY 11788

Phone: 1.631.435.0800; Fax: 1.631.435.8026;

Email: [info@festo-usa.com](mailto:info@festo-usa.com)

[www.festo.com/us](http://www.festo.com/us)

## Canada



**Headquarters:** Festo Inc., 5300 Explorer Drive, Mississauga, Ontario L4W 5G4

Phone: 1.905.624.9000; Fax: 1.905.624.9001;

Email: [festo.canada@ca.festo.com](mailto:festo.canada@ca.festo.com)

[www.festo.ca](http://www.festo.ca)

## Mexico



**Headquarters:** Festo Pneumatic, S.A., Av. Ceylán 3, Col. Tequesquahuac,  
54020 Tlalneantla, Edo. de México

Phone: 011 52 [55] 53 21 66 00; Fax: 011 52 [55] 53 21 66 65;

Email: [festo.mexico@mx.festo.com](mailto:festo.mexico@mx.festo.com)

[www.festo.com/mx](http://www.festo.com/mx)

---

## Central USA

Festo Corporation  
1441 East Business  
Center Drive  
Mt. Prospect, IL 60056, USA  
Phone: 1.847.759.2600  
Fax: 1.847.768.9480



## Western USA

Festo Corporation  
4935 Southfront Road,  
Suite F  
Livermore, CA 94550, USA  
Phone: 1.925.371.1099  
Fax: 1.925.245.1286



---

## Festo Worldwide

Argentina Australia Austria Belarus Belgium Brazil Bulgaria Canada Chile China Colombia Croatia Czech Republic Denmark  
Estonia Finland France Germany Great Britain Greece Hong Kong Hungary India Indonesia Iran Ireland Israel Italy Japan Latvia  
Lithuania Malaysia Mexico Netherlands New Zealand Norway Peru Philippines Poland Romania Russia Serbia Singapore  
Slovakia Slovenia South Africa South Korea Spain Sweden Switzerland Taiwan Thailand Turkey Ukraine United States Venezuela

[www.festo.com](http://www.festo.com)