

- Magnetically coupled without mechanical connections
- Pressure tight and leak-free system
- Dirt and dust cannot enter
- Space-saving installation with long strokes

Linear drive units DGO

Features

FESTO



General information

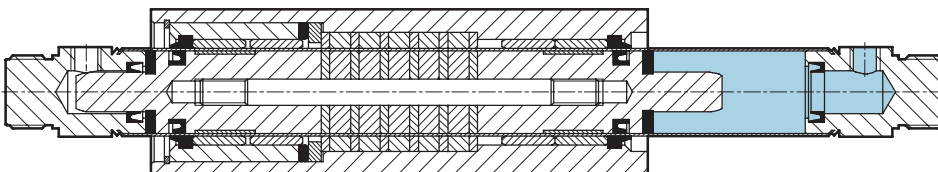
- Double-acting
- Magnetically coupled without mechanical connections
- Piston chamber and slide are pressure tight
- Pressure tight and leak-free system
- Dirt and dust cannot enter
- Space-saving installation with long strokes
- For contactless position sensing
- With adjustable end-position cushioning at both ends (not for piston \varnothing of 12 mm)

The technology in detail

Motion is transmitted via the force locking of the magnetic coupling on the moveable outer slide.

This means that there is no advancing piston rod; the installation space required is less than for conventional pneumatic cylinders.

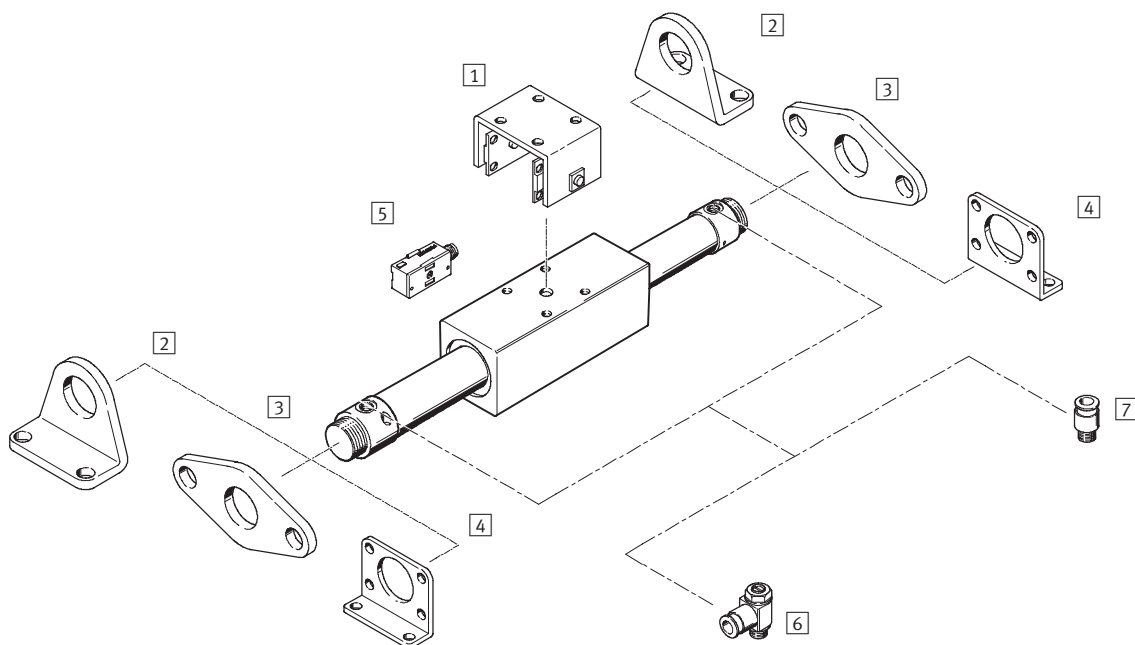
The cylinder chamber is hermetically sealed against the outer slide as there is no mechanical connection. This prevents any leakage loss.



Linear drive units DGO

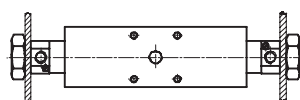
Peripherals overview

FESTO



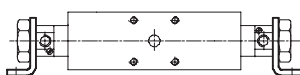
Mounting options

With hexagonal nuts (included in scope of delivery)



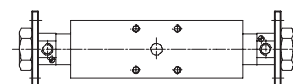
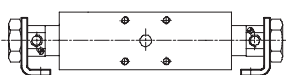
With mounting attachments

Foot mounting HBN



Flange mounting

FBN



| Mounting attachments and accessories | | |
|---|---|-----------------|
| | Brief description | → Page/Internet |
| 1 Moment compensator FKG | To compensate misalignments and eliminate tilting moments | 10 |
| 2 Foot mounting HBN | On end caps for piston \varnothing 12 ... 25 mm | 10 |
| 3 Flange mounting FBN | On end caps for piston \varnothing 12 ... 25 mm | 11 |
| 4 Flange mounting FBN | On end caps for piston \varnothing 32 ... 40 mm | 11 |
| 5 Proximity sensors SMEO-/SMTO-/SMPO-1 | For contactless position sensing, mountable externally via a mounting kit | 12 |
| 6 One-way flow control valve GRLA | To regulate speed | 12 |
| 7 Push-in fitting QS | For connecting compressed air tubing with standard external diameters | quick star |

Linear drive units DGO

Type codes

FESTO

Rodless cylinders
Magnetically coupled

3.2

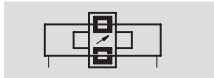
| | | | | | | | | | | | | |
|-------------------------|---|-----|---|----|---|------|---|-----|---|---|---|---|
| | | DGO | – | 25 | – | 3000 | – | PPV | – | A | – | B |
| Type | | | | | | | | | | | | |
| Double-acting | | | | | | | | | | | | |
| DGO | Linear drive unit | | | | | | | | | | | |
| Piston Ø [mm] | | | | | | | | | | | | |
| Stroke [mm] | | | | | | | | | | | | |
| Cushioning | | | | | | | | | | | | |
| P | Flexible cushioning rings/plates at both ends | | | | | | | | | | | |
| PPV | Pneumatic cushioning adjustable at both ends | | | | | | | | | | | |
| Position sensing | | | | | | | | | | | | |
| A | For proximity sensing | | | | | | | | | | | |
| Generation | | | | | | | | | | | | |
| B | B series | | | | | | | | | | | |

Linear drive units DGO

Technical data

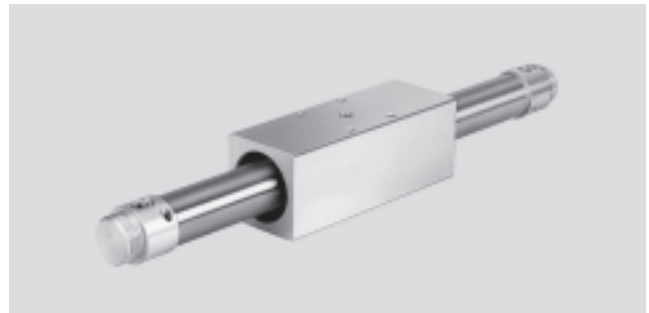
FESTO

Function



- Ø - Diameter
12 ... 40 mm

- | - Stroke length
10 ... 4,000 mm



| General technical data | | | | | | |
|------------------------|--|--|--------------|--------------|----|--------------|
| Piston Ø | 12 | 16 | 20 | 25 | 32 | 40 |
| Stroke [mm] | 10 ... 1,200 | 10 ... 2,500 | 10 ... 3,000 | 10 ... 3,500 | | 10 ... 4,000 |
| Pneumatic connection | M5 | | G1/8 | | | G1/4 |
| Operating medium | Filtered compressed air, lubricated or unlubricated, other media upon request. | | | | | |
| Design | Rodless | | | | | |
| Driver principle | Force-locking (magnetic) | | | | | |
| Cushioning | Flexible cushioning rings/plates at both ends | Pneumatic cushioning adjustable at both ends | | | | |
| Cushioning length [mm] | – | 14 | 17 | 19 | 20 | 23 |
| Position sensing | For proximity sensing | | | | | |
| Type of mounting | With hexagonal nuts | | | | | |
| | With accessories | | | | | |
| Fitting position | Any | | | | | |

| Operating and environmental conditions | | | | | | |
|--|-------------|-----------|-----------|-----------|-----------|-----------|
| Piston Ø | 12 | 16 | 20 | 25 | 32 | 40 |
| Operating pressure [bar] | 2 ... 7 | 1.7 ... 7 | 1.6 ... 7 | 1.5 ... 7 | 1.4 ... 7 | 1.3 ... 7 |
| Temperature range ¹⁾ [°C] | –20 ... +60 | | | | | |

1) Note operating range of proximity sensors

| Forces [N] | | | | | | |
|--|-----|-----|-----|-----|-----|-------|
| Piston Ø | 12 | 16 | 20 | 25 | 32 | 40 |
| Theoretical force at 6 bar | 68 | 121 | 188 | 295 | 483 | 754 |
| Breakaway force of the magnetic coupling | 100 | 160 | 270 | 400 | 680 | 1,050 |

| Weights [g] | | | | | | |
|------------------------------------|-----|-----|-------|-------|-------|-------|
| Piston Ø | 12 | 16 | 20 | 25 | 32 | 40 |
| Product weight with 0 mm stroke | 320 | 620 | 1,000 | 1,340 | 2,400 | 3,920 |
| Additional weight per 10 mm stroke | 2 | 3 | 4 | 4.8 | 6 | 8 |

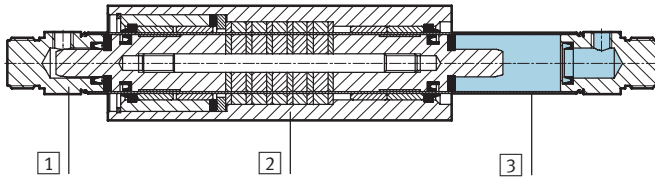
Linear drive units DGO

Technical data

FESTO

Materials

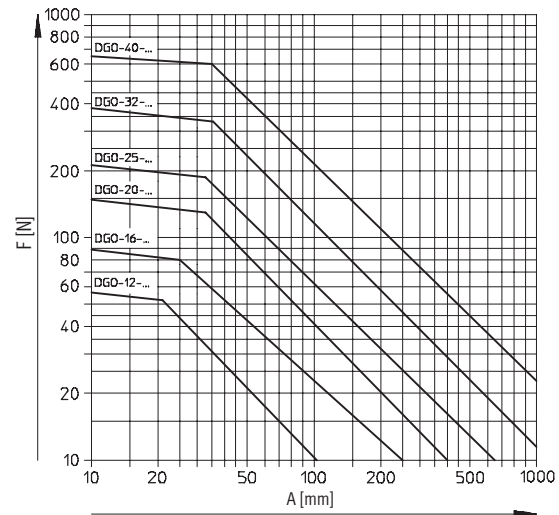
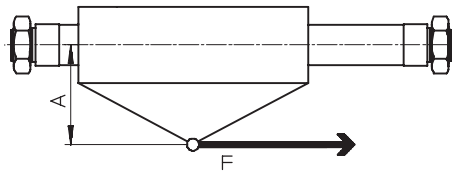
Sectional view



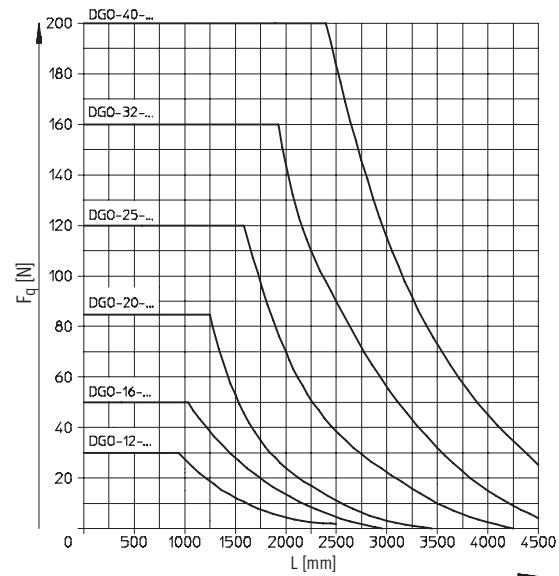
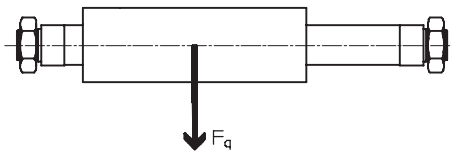
Linear drive unit

| | | |
|---|-----------------|------------------------------|
| 1 | End cap | Anodised aluminium |
| 2 | Outer slide | Anodised aluminium |
| 3 | Cylinder barrel | High-alloy steel |
| - | Seals | Nitrile rubber, polyurethane |

Permissible axial force F dependent on lever arm A



Permissible lateral force F_q dependent on stroke length L



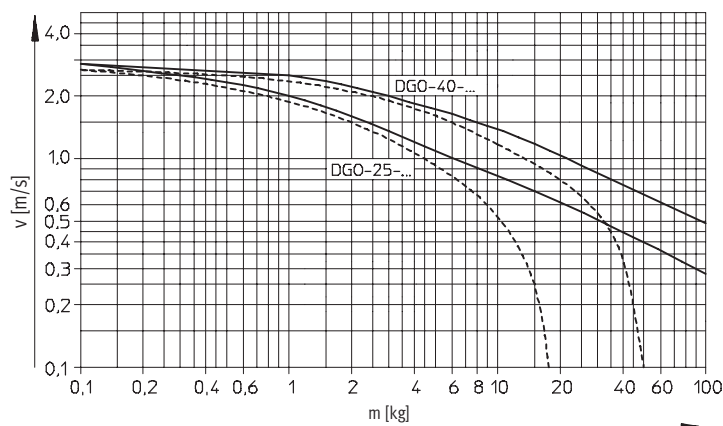
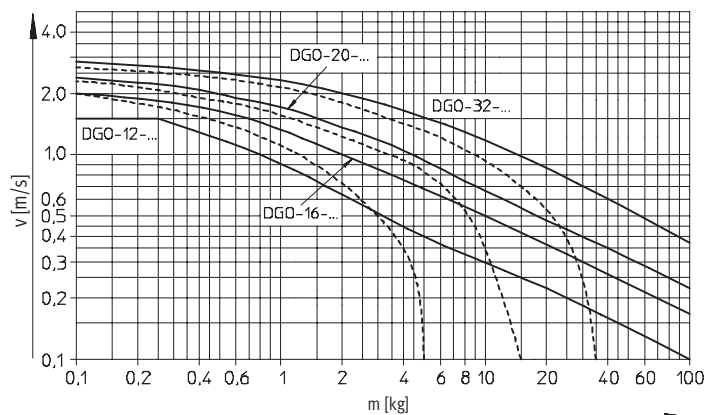
Linear drive units DGO

Technical data

FESTO

Max. piston speed v dependent on the moving mass m

If the operating conditions are outside the permissible range, the moving mass must be externally cushioned using suitable equipment (shock absorbers or stops).

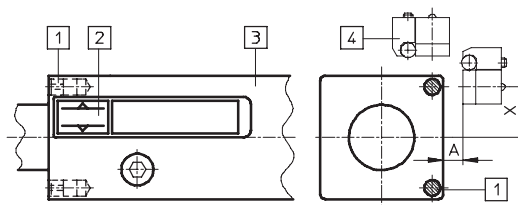


— Horizontal mounting position
- - - - - Vertical mounting position

Contactless position sensing

Mounting the proximity sensors SMEO-/SMT0-/SMPO-1

The proximity sensors are fitted by the user near the linear drive unit (e.g. on a $\varnothing 6$ mm rod). Contactless position sensing is only possible in the area shown. Too small a distance A can cause multiple switching.

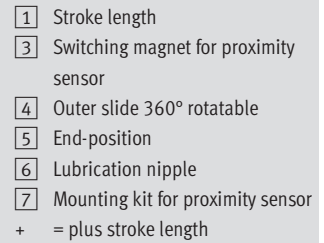


- 1 Switching magnet for proximity sensor
- 2 Switching range
- 3 Outer slide 360° rotatable
- 4 Proximity sensor with mounting kit SMB-1

Switching distances, switching travel and hysteresis [mm]

| Proximity sensors | A | X | | | | | | Switching travel | Hysteresis |
|-------------------|-------------|------------|------------|------------|------------|------------|------------|------------------|-------------|
| | | DGO-12-... | DGO-18-... | DGO-20-... | DGO-25-... | DGO-32-... | DGO-40-... | | |
| SMEO-1, SMT0-1 | 6.0 ... 8.0 | 10 ... 11 | 13 ... 14 | 16 ... 17 | 20 ... 21 | 25 ... 26 | 32 ... 33 | 7.5 ... 13 | 1.0 ... 4.5 |
| SMPO-1-H-B | 5.0 ... 6.0 | | | | | | | 7.0 ... 15 | 0.4 ... 2.5 |

Technical data

Piston $\varnothing 12$ mm

- 1 Stroke length
- 2 Regulating screw for adjustable end-position cushioning
- 3 Switching magnet for proximity sensor
- 4 Outer slide 360° rotatable
- 5 End-position
- 6 Lubrication nipple
- 7 Mounting kit for proximity sensor

+ = plus stroke length

- 1 Stroke length
- 2 Regulating screw for adjustable end-position cushioning
- 3 Switching magnet for proximity sensor
- 4 Outer slide 360° rotatable
- 5 End-position
- 6 Lubrication nipple
- 7 Mounting kit for proximity sensor

+ = plus stroke length

Linear drive units DGO

Technical data

FESTO

| Dimensions | | | | | | | | | |
|------------|----|----|---------------|---------|---------|----|---------|---------------|---------|
| Ø | B1 | B2 | D2 Ø h9 | D3 | D4 Ø | D5 | D6 Ø | D7 Ø h8 | D8 Ø |
| [mm] | | | | | | | | | |
| 16 | 8 | 36 | 16 | M16x1.5 | 20 | M5 | 17.5 | 8 | – |
| 20 | 11 | 42 | 22 | M22x1.5 | 27 | M5 | 21.3 | 8 | – |
| 25 | 11 | 50 | 22 | M22x1.5 | 27 | M6 | 26.5 | 10 | – |
| 32 | 8 | 60 | 30 | M30x1.5 | 38 | M6 | 33.6 | 10 | 42 |
| 40 | 10 | 74 | 38 | M38x1.5 | 46 | M8 | 42.6 | 12 | 50 |

| Ø | E1 | J1 | L1 | L2 | L3 | L4 | L5 | L6 | L7 |
|------|--------------------|------|---------------|------|---------------|----|------|---------------|------|
| [mm] | | | | | | | | | |
| 16 | M5 | 13.5 | 205 +1/-0.5 | 12 | 149 +1/-0.5 | 12 | 28 | 181 ±0.6 | 62.5 |
| 20 | G1/8 | 16.5 | 217 +0.8/-0.6 | 16.5 | 169 +1/-0.8 | 16 | 24.5 | 185 +0.8/-0.6 | 67.5 |
| 25 | G1/8 ¹⁾ | 20.5 | 238 +1.3/-0.7 | 20 | 190 +1.5/-0.9 | 16 | 28 | 206 +1.3/-0.7 | 75 |
| 32 | G1/8 | 25.5 | 270 +0.8/-0.6 | 23.6 | 218 +0.8/-0.6 | 16 | 33.6 | 238 +0.8/-0.6 | 85 |
| 40 | G1/4 | 32 | 327 +1.3/-0.7 | 35 | 271 +1.5/-0.9 | 16 | 47 | 295 +1.3/-0.7 | 100 |

| Ø | L8 | L9 | L10 | L11 | L12 | L13 | T1 | T2 | ≈G1 |
|------|----|------|-----|-----|------|-----|------|-----|-----|
| [mm] | | | | | | | | | |
| 16 | 26 | 49.5 | 26 | 16 | 40 | 125 | 8 | 4 | 24 |
| 20 | 32 | 51.5 | 32 | 8 | 40.5 | 135 | 10 | 3 | 32 |
| 25 | 36 | 57 | 36 | 8 | 44 | 150 | 10 | 4 | 32 |
| 32 | 48 | 61 | 48 | 10 | 49.5 | 170 | 12.5 | 4 | – |
| 40 | 56 | 75 | 50 | 12 | 63 | 200 | 16 | 4.5 | – |

1) Max. screw-in depth 7 mm. Use screws supplied by Festo: → www.festo.com

| Ordering data | | | |
|---------------|--------------|----------|--------------------|
| Ø | Stroke | Part No. | Type |
| [mm] | [mm] | | |
| 12 | 10 ... 1,200 | 15 221 | DGO-12-...-P-A-B |
| 16 | 10 ... 2,500 | 15 222 | DGO-16-...-PPV-A-B |
| 20 | 10 ... 3,000 | 15 223 | DGO-20-...-PPV-A-B |
| 25 | 10 ... 3,500 | 15 224 | DGO-25-...-PPV-A-B |
| 32 | 10 ... 3,500 | 15 225 | DGO-32-...-PPV-A-B |
| 40 | 10 ... 4,000 | 15 226 | DGO-40-...-PPV-A-B |

Linear drive units DGO

Accessories

FESTO

Moment compensator FKG

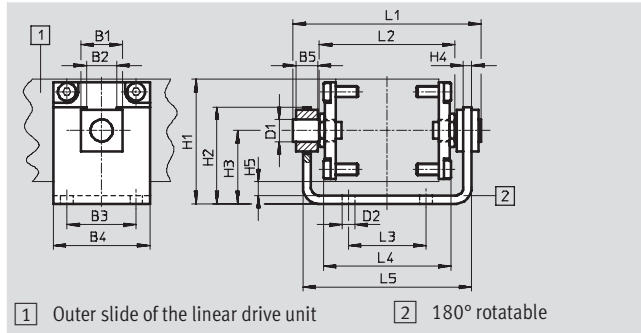
for piston Ø 16 ... 40 mm

Maximum permissible misalignment
of parallel guide in longitudinal axis
of cylinder = 1 mm.

Scope of delivery: 1 moment
compensator and 8 mounting screws

Material:

Galvanised steel



| Dimensions and ordering data | | | | | | | | | | | | | | | | | | | | | |
|------------------------------|----|----|----|----|----|---------|---------|----|----|----|----|----|-----|----|----|----|-----|-------------------|---------------|----------|----------|
| For Ø | B1 | B2 | B3 | B4 | B5 | D1 Ø | D2 Ø | H1 | H2 | H3 | H4 | H5 | L1 | L2 | L3 | L4 | L5 | CRC ¹⁾ | Weight [g] | Part No. | Type |
| 16 | 18 | 14 | 26 | 40 | 8 | 10 | 5.5 | 47 | 40 | 29 | 4 | 7 | 74 | 54 | 26 | 49 | 68 | 2 | 257 | 15 233 | FKG-16-B |
| 20 | 18 | 14 | 32 | 42 | 8 | 10 | 5.5 | 53 | 43 | 32 | 4 | 7 | 82 | 62 | 32 | 57 | 76 | 2 | 302 | 33 339 | FKG-20-B |
| 25 | 22 | 16 | 36 | 50 | 12 | 12 | 6.6 | 63 | 50 | 38 | 5 | 8 | 98 | 70 | 36 | 64 | 89 | 2 | 511 | 15 234 | FKG-25-B |
| 32 | 22 | 16 | 48 | 60 | 12 | 12 | 6.6 | 73 | 55 | 43 | 5 | 8 | 108 | 80 | 48 | 74 | 99 | 2 | 677 | 33 340 | FKG-32-B |
| 40 | 30 | 22 | 50 | 70 | 16 | 16 | 9 | 90 | 70 | 53 | 6 | 10 | 134 | 98 | 56 | 92 | 122 | 2 | 1,277 | 15 235 | FKG-40-B |

1) Corrosion resistance class 2 according to Festo standard 940 070

Components requiring moderate corrosion resistance. Externally visible parts with primarily decorative surface requirements which are in direct contact with a surrounding industrial atmosphere or media such as cooling or lubricating agents.

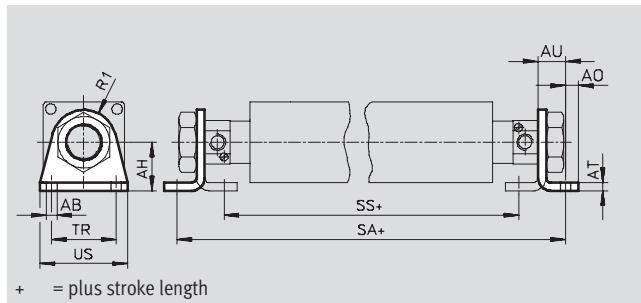
Foot mounting HBN

for piston Ø 12 ... 25 mm

Material:

Galvanised steel

Free of copper, PTFE and silicone



| Dimensions and ordering data | | | | | | | | | | | | |
|------------------------------|---------|----|----|----|----|----|-----|-----|----|----|-------------------|---------------|
| For Ø | AB Ø | AH | AO | AT | AU | R1 | SA | SS | TR | US | CRC ¹⁾ | Weight [g] |
| 12 | 5.5 | 20 | 6 | 4 | 14 | 13 | 153 | 105 | 32 | 42 | 2 | 40 |
| 16 | 5.5 | 27 | 6 | 4 | 14 | 13 | 209 | 161 | 32 | 42 | 2 | 50 |
| 20 | 6.6 | 30 | 8 | 5 | 17 | 20 | 219 | 161 | 40 | 54 | 2 | 100 |
| 25 | 6.6 | 30 | 8 | 5 | 17 | 20 | 240 | 182 | 40 | 54 | 2 | 100 |

1) Corrosion resistance class 2 according to Festo standard 940 070

Components requiring moderate corrosion resistance. Externally visible parts with primarily decorative surface requirements which are in direct contact with a surrounding industrial atmosphere or media such as cooling or lubricating agents.

Linear drive units DGO

FESTO

Accessories

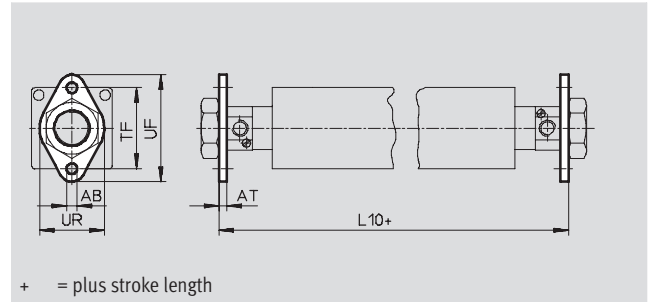
Flange mounting FBN

for piston Ø 12 ... 25 mm

Material:

Galvanised steel

Free of copper, PTFE and silicone



| Dimensions and ordering data | | | | | | | | | | | |
|------------------------------|---------|----|-----|----|----|----|----|-------------------|---------------|----------|-----------|
| For Ø | AB Ø | AT | L10 | TF | UF | UR | US | CRC ¹⁾ | Weight [g] | Part No. | Type |
| 12 | 5.5 | 4 | 133 | 40 | 53 | 30 | 42 | 2 | 25 | 5 130 | FBN-12/16 |
| 16 | 5.5 | 4 | 189 | 40 | 53 | 30 | 42 | 2 | 25 | 5 130 | FBN-12/16 |
| 20 | 6.6 | 5 | 189 | 50 | 66 | 40 | 54 | 2 | 45 | 5 131 | FBN-20/25 |
| 25 | 6.6 | 5 | 216 | 50 | 66 | 40 | 54 | 2 | 45 | 5 131 | FBN-20/25 |

1) Corrosion resistance class 2 according to Festo standard 940 070

Components requiring moderate corrosion resistance. Externally visible parts with primarily decorative surface requirements which are in direct contact with a surrounding industrial atmosphere or media such as cooling or lubricating agents.

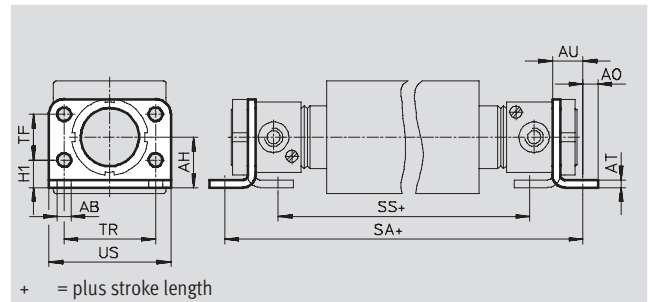
Flange mounting FBN

for piston Ø 32 ... 40 mm

Material:

Galvanised steel

Free of copper, PTFE and silicone



| Dimensions and ordering data | | | | | | | | | | | |
|------------------------------|---------|----|----|----|----|----|-----|-----|----|----|----|
| For Ø | AB Ø | AH | AO | AT | AU | H1 | SA | SS | TF | TR | US |
| 32 | 7 | 28 | 7 | 4 | 14 | 14 | 266 | 218 | 28 | 52 | 66 |
| 40 | 9 | 33 | 10 | 5 | 19 | 18 | 335 | 265 | 30 | 60 | 80 |


1) Corrosion resistance class 2 according to Festo standard 940 070

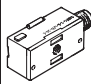
Components requiring moderate corrosion resistance. Externally visible parts with primarily decorative surface requirements which are in direct contact with a surrounding industrial atmosphere or media such as cooling or lubricating agents.

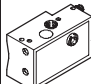
Linear drive units DGO

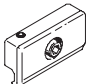
Accessories



FESTO


| Ordering data – Rectangular proximity sensors, magneto-resistive | | | | | | Technical data → Internet: smto | |
|---|------------------|---------------|-----------------------|---------|------------------|---------------------------------|----------------------|
| | Mounting | Switch output | Electrical connection | | Cable length [m] | Part No. | Type |
| | | | Cable | M8 plug | | | |
| NO contact | | | | | | | |
|  | With accessories | PNP | 3-wire | – | 2.5 | 151 683 | SMTO-1-PS-K-LED-24-C |
| | | | – | 3-pin | – | 151 685 | SMTO-1-PS-S-LED-24-C |
| | | NPN | 3-wire | – | 2.5 | 151 684 | SMTO-1-NS-K-LED-24-C |
| | | | – | 3-pin | – | 151 686 | SMTO-1-NS-S-LED-24-C |

| Ordering data – Rectangular proximity sensors, magnetic reed | | | | | Technical data → Internet: smeo | |
|---|------------------|-----------------------|---------|---------------------|---------------------------------|--------------------|
| | Mounting | Electrical connection | | Cable length [m] | Part No. | Type |
| | | Cable | M8 plug | | | |
| NO contact | | | | | | |
|  | With accessories | 3-wire | – | 2.5 | 30 459 | SMEO-1-LED-24-B |
| | | 3-wire | – | 5.0 | 151 672 | SMEO-1-LED-24-K5-B |
| | | – | 3-pin | – | 150 848 | SMEO-1-S-LED-24-B |

| Ordering data – Rectangular proximity sensors, pneumatic | | | | Technical data → Internet: smpo | |
|--|------------------|-----------------------------------|----------|---------------------------------|--|
| | Mounting | Pneumatic connection | Part No. | Type | |
| 3/2-way valve, normally closed | | | | | |
|  | With accessories | Barbed fitting for 3 mm tubing ID | 31 008 | SMPO-1-H-B | |

| Ordering data – Mounting kit | | | Technical data → Internet: smb | |
|---|---|--|--------------------------------|-------|
| | Mounting | | Part No. | Type |
|  | For cylinder with tie rod Ø 6 mm or DUO rail mounting profile | | 11 886 | SMB-1 |

| Ordering data – Connecting cables | | | | | Technical data → Internet: nebu | |
|---|------------------------------|--|------------------------------|------------------|---------------------------------|---------------------|
| | Electrical connection, left | | Electrical connection, right | Cable length [m] | Part No. | Type |
|  | Straight socket, M8x1, 3-pin | | Cable, open end, 3-wire | 2.5 | 541 333 | NEBU-M8G3-K-2.5-LE3 |
| | | | | 5 | 541 334 | NEBU-M8G3-K-5-LE3 |
|  | Angled socket, M8x1, 3-pin | | Cable, open end, 3-wire | 2.5 | 541 338 | NEBU-M8W3-K-2.5-LE3 |
| | | | | 5 | 541 341 | NEBU-M8W3-K-5-LE3 |

| Ordering data – One-way flow control valves | | | | Technical data → Internet: grla | |
|---|------------|---------------|--------------|---------------------------------|-----------------|
| | Connection | | Material | Part No. | Type |
| | Thread | For tubing OD | | | |
|  | M5 | 3 | Metal design | 193 137 | GRLA-M5-QS-3-D |
| | | 4 | | 193 138 | GRLA-M5-QS-4-D |
| | G1/8 | 4 | | 193 143 | GRLA-1/8-QS-4-D |
| | | 6 | | 193 144 | GRLA-1/8-QS-6-D |
| | G1/4 | 6 | | 193 146 | GRLA-1/4-QS-6-D |
| | | 8 | | 193 147 | GRLA-1/4-QS-8-D |
| | | | | | |

Product Range and Company Overview

A Complete Suite of Automation Services

Our experienced engineers provide complete support at every stage of your development process, including: conceptualization, analysis, engineering, design, assembly, documentation, validation, and production.



Custom Automation Components

Complete custom engineered solutions



Custom Control Cabinets

Comprehensive engineering support and on-site services



Complete Systems

Shipment, stocking and storage services

The Broadest Range of Automation Components

With a comprehensive line of more than 30,000 automation components, Festo is capable of solving the most complex automation requirements.



Electromechanical

Electromechanical actuators, motors, controllers & drives



Pneumatics

Pneumatic linear and rotary actuators, valves, and air supply



PLCs and I/O Devices

PLC's, operator interfaces, sensors and I/O devices

Supporting Advanced Automation... As No One Else Can!

Festo is a leading global manufacturer of pneumatic and electromechanical systems, components and controls for industrial automation, with more than 12,000 employees in 56 national headquarters serving more than 180 countries. For more than 80 years, Festo has continuously elevated the state of manufacturing with innovations and optimized motion control solutions that deliver higher performing, more profitable automated manufacturing and processing equipment. Our dedication to the advancement of automation extends beyond technology to the education and development of current and future automation and robotics designers with simulation tools, teaching programs, and on-site services.

Quality Assurance, ISO 9001 and ISO 14001 Certifications

Festo Corporation is committed to supply all Festo products and services that will meet or exceed our customers' requirements in product quality, delivery, customer service and satisfaction.

To meet this commitment, we strive to ensure a consistent, integrated, and systematic approach to management that will meet or exceed the requirements of the ISO 9001 standard for Quality Management and the ISO 14001 standard for Environmental Management.



© Copyright 2008, Festo Corporation. While every effort is made to ensure that all dimensions and specifications are correct, Festo cannot guarantee that publications are completely free of any error, in particular typing or printing errors. Accordingly, Festo cannot be held responsible for the same. For Liability and Warranty conditions, refer to our "Terms and Conditions of Sale", available from your local Festo office. All rights reserved. No part of this publication may be reproduced, distributed, or transmitted in any form or by any means, electronic, mechanical, photocopying or otherwise, without the prior written permission of Festo. All technical data subject to change according to technical update.



Printed on recycled paper at New Horizon Graphic, Inc., FSC certified as an environmentally friendly printing plant.

Festo North America

United States

Customer Resource Center

502 Earth City Expy., Suite 125
Earth City, MO 63045

For ordering assistance, or to find
your nearest Festo Distributor,

Call: 1.800.99.FESTO

Fax: 1.800.96.FESTO

Email: customer.service@us.festo.com

For technical support,

Call: 1.866.GO.FESTO

Fax: 1.800.96.FESTO

Email: product.support@us.festo.com

Headquarters

Festo Corporation
395 Moreland Road
P.O. Box 18023
Hauppauge, NY 11788
www.festo.com/us

Sales Offices

Appleton

N. 922 Tower View Drive, Suite N
Greenville, WI 54942

Boston

120 Presidential Way, Suite 330
Woburn, MA 01801

Chicago

1441 East Business Center Drive
Mt. Prospect, IL 60056

Dallas

1825 Lakeway Drive, Suite 600
Lewisville, TX 75057

Detroit - Automotive Engineering Center

2601 Cambridge Court, Suite 320
Auburn Hills, MI 48326

New York

395 Moreland Road
Hauppauge, NY 11788

Silicon Valley

4935 Southfront Road, Suite F
Livermore, CA 94550

Design and Manufacturing Operations



East: 395 Moreland Road, Hauppauge, NY 11788



Central: 1441 East Business Center Drive, Mt. Prospect, IL 60056



West: 4935 Southfront Road, Suite F, Livermore, CA 94550

Mexico

Headquarters

Festo Pneumatic, S.A.
Av. Ceylán 3, Col. Tequesquahuac
54020 Tlalnepantla, Edo. de México
Call: 011 52 [55] 53 21 66 00
Fax: 011 52 [55] 53 21 66 65
Email: festo.mexico@mx.festo.com
www.festo.com/mx



Canada

Headquarters

Festo Inc.
5300 Explorer Drive
Mississauga, Ontario L4W 5G4
Call: 1.905.624.9000
Fax: 1.905.624.9001
Email: info.ca@ca.festo.com
www.festo.com/ca



Festo Worldwide

Argentina Australia Austria Belarus Belgium Brazil Bulgaria Canada Chile China Colombia Croatia Czech Republic Denmark
Estonia Finland France Germany Great Britain Greece Hong Kong Hungary India Indonesia Iran Ireland Israel Italy Japan
Latvia Lithuania Malaysia Mexico Netherlands New Zealand Norway Peru Philippines Poland Romania Russia Serbia Singapore
Slovakia Slovenia South Africa South Korea Spain Sweden Switzerland Taiwan Thailand Turkey Ukraine United States Venezuela

www.festo.com