

Control block for two-hand start ZSB



Control block for two-hand start ZSB

Key features



Function

This pneumatic control block for two-hand start ZSB is used where a manually started operation, such as the triggering of compressed air cylinders, would otherwise involve danger for a machine operator, or with other devices where machine operators have to have both hands clear of a danger zone when starting a machine.

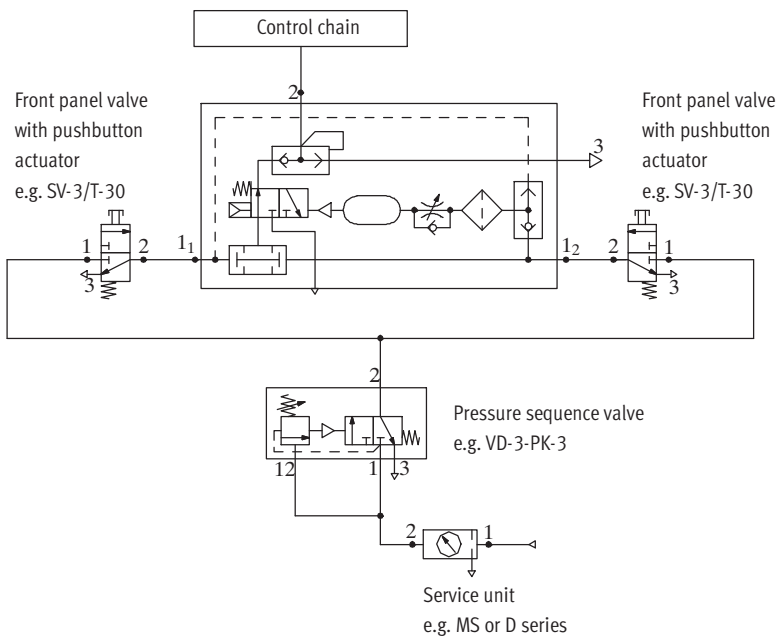
The ZSB will only switch if pressure is applied simultaneously via 3/2-way pushbutton valves to the two inlet ports 1₁ and 1₂ of the ZSB, i.e. within max. 0.5 seconds, and if there is an output signal at port 2. If both pushbutton valves are activated, outlet port 2 is pressurised.

Releasing one or both pushbutton valves interrupts the flow immediately and the outlet port 2 becomes unpressurised. The system vents from 2 to 3.

The pneumatic control block for two-hand start is a safety component in accordance with the EU Machinery Directive.

It falls within Category 1 as defined by EN 954 (only in conjunction with a pressure sequence valve such as VD-3-PK-3) and conforms to Type III A as defined by EN 574.

Sample circuit



Note

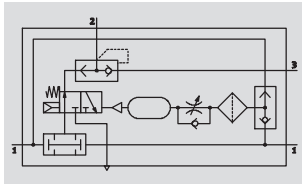
When installing the two pushbutton valves which actuate the control block for two-hand start, make sure that the protective function cannot easily be bypassed, for example by pressing the pushbutton valves with the hand and elbow of the same arm. If necessary, the pushbutton valves should be fitted with an additional guard plate.




Control block for two-hand start ZSB

Technical data

FESTO

Function



-  Flow rate
up to 50 l/min
-  Temperature range
-10 ... +60°C
-  Operating pressure
3 ... 8 bar

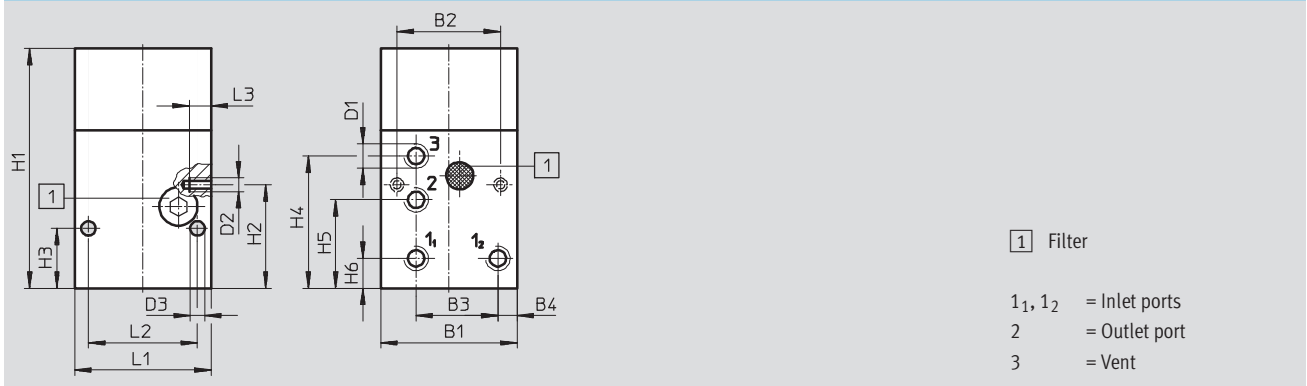


General technical data	
Pneumatic connection	G $\frac{1}{8}$
Nominal size [mm]	4
Actuation type	Pneumatic
Design	Poppet valve with spring return
Type of mounting	Via through-hole Via female thread
Mounting position	Any
Standard nominal flow rate [l/min]	50
Product weight [g]	490

Operating and environmental conditions	
Operating pressure [bar]	3 ... 8
Operating medium	Filtered compressed air, grade of filtration 50 μ m
Ambient temperature [°C]	-10 ... +60
CE mark (see declaration of conformity)	To EU Machinery Directive

Materials	
Housing	Anodised wrought aluminium alloy
End cap	Die-cast aluminium
Seals	NBR

Dimensions Download CAD data → www.festo.com



B1	B2	B3	B4	D1	D2	D3	H1	H2	H3	H4	H5	H6	L1	L2	L3
50	38	30	7	G $\frac{1}{8}$	M5	5.3	88	38	22	48.5	32.5	11	50	40	8

Ordering data	
	Part No. Type
Control block for two-hand start	3527 ZSB- $\frac{1}{8}$