

# Membrane Air Dryers MS4-LDM1 – Metric Series

FESTO



Membrane air dryers remove water vapor from the compressed air and lower the dew point preventing moisture from forming downstream. Pre-filtration with a grade of 0.01 micron is required.

- Pneumatic connection: G1/8, G1/4, G3/8
- Pressure dew point reduction: 20 K
- Supply pressure: 3 ... 12.5 bar
- Flow rate: 50 ... 100 l/min

Product Range Overview						
Type	Flow rate [l/min]	Pneumatic connections		Bowl guard		Reverse flow
		Body thread	Port plate	Plastic bowl guard	Metal bowl	Flow direction from right to left
MS4			AG...	R	U	Z
LDM1	50 ... 100	G1/8, G1/4	G1/8, G1/4, G3/8	–	■	■

## Features

- Optimum final dryer with excellent operational reliability
- Suitable for use as an individual unit or for integration in existing service unit combinations
- Flow rate-dependent dew point reduction
- Wear-free function requiring no external energy
- 15% purge air flow rate
- Optional purge ring for ducting of purging air

- Typical areas of application:
- Drying, cleaning of precision parts
  - Measuring technology
  - Rinsing of precision glass scales
  - Painting systems
  - Paper and packaging machines

## Contents

Technical Data	→ 306
Dimensional Drawings	→ 308
Ordering Data	→ 308
Accessories	→ 310

→ [www.festo.com/catalog/ms4-ldm](http://www.festo.com/catalog/ms4-ldm)

# Membrane Air Dryers MS4-LDM1 – Metric Series

Technical Data

**FESTO**

ISO Symbol



## Note

Prefiltration of the compressed air using a micro filter MS-LFM-A, filtration grade 0.01 µm (residual particles < 0.1 µm, residual oil content < 0.1 mg/m<sup>3</sup>) is vital for flawless functioning of the unit.



General Technical Data		
Pneumatic connection 1, 2	G1/8	G1/4
Pressure dew point reduction [K]	20	
Supply pressure [bar]	3 ... 12.5	

Note: This product conforms with the ISO 1179-1 standard and the ISO 228-1 standard.

Standard Flow Rate $q_{n1}$ [l/min]		
	Cartridge P05	Cartridge P10
Input $q_{n\text{ In}}$	59	118
Output $q_{n\text{ Out}}$	50	100
Purge air $q_{n\text{ Purge}}$	8.8	17.6

1) Measured at  $p_1 = 6.9\text{ bar}$ ,  $\theta_{pd\text{ In}} = 25\text{ °C}$ ,  $\theta_{pd\text{ Out}} = 5\text{ °C} \pm 1.5\text{ °C}$  ( $\theta_{pA\text{ Out}} = -21.5\text{ °C} \pm 1.2\text{ °C}$ ),  $\theta_{\text{amb}} = 25\text{ °C}$

Operating and Environmental Conditions	
Operating medium	Compressed air, air quality class 1.7.2 to DIN ISO 8573-1
Ambient temperature [°C]	+2 ... +50
Temperature of medium [°C]	+2 ... +50
Storage temperature [°C]	-20 ... +60
Assembly position	Vertical $\pm 5^\circ$
Corrosion resistance class CRC <sup>2)</sup>	2

2) Corrosion resistance class 2 according to Festo standard 940 070

Components requiring moderate corrosion resistance. Externally visible parts with primarily decorative surface requirements which are in direct contact with a normal industrial environment or media such as coolants or lubricating agents.

Weights [g]		
	Cartridge P05	Cartridge P10
Membrane air dryer	420	530

- For spare parts go to: [www.festo.com/en/spare\\_parts\\_service](http://www.festo.com/en/spare_parts_service)

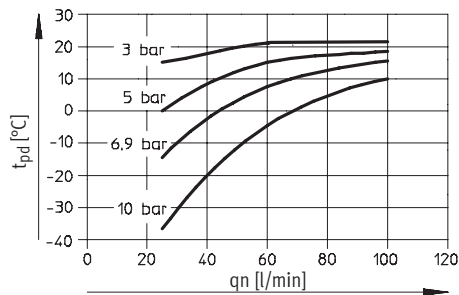
# Membrane Air Dryers MS4-LDM1 – Metric Series

Technical Data

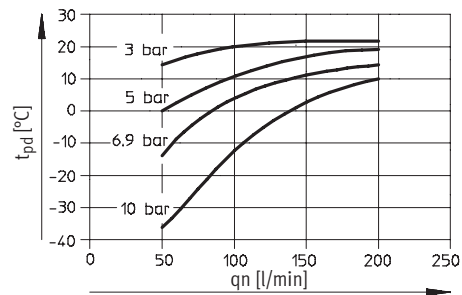
FESTO

## Pressure Dew Point $t_{pd}$ (Output) as a Function of the Standard Flow Rate at Output $q_n$

MS4-LDM1-...-P05

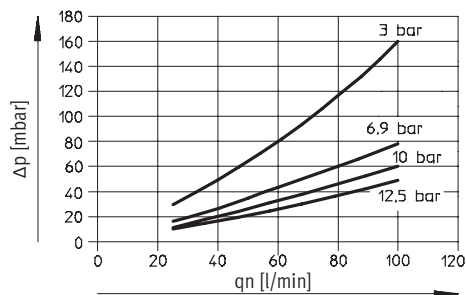


MS4-LDM1-...-P10

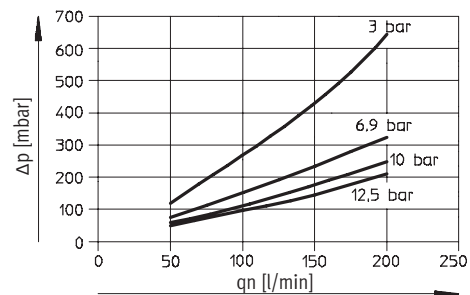


## Differential Pressure $\Delta p$ as a Function of the Standard Flow Rate at Output $q_n$

MS4-LDM1-...-P05

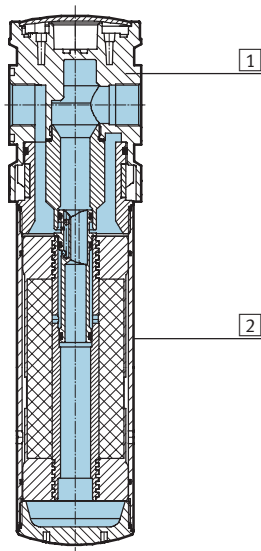


MS4-LDM1-...-P10



## Materials

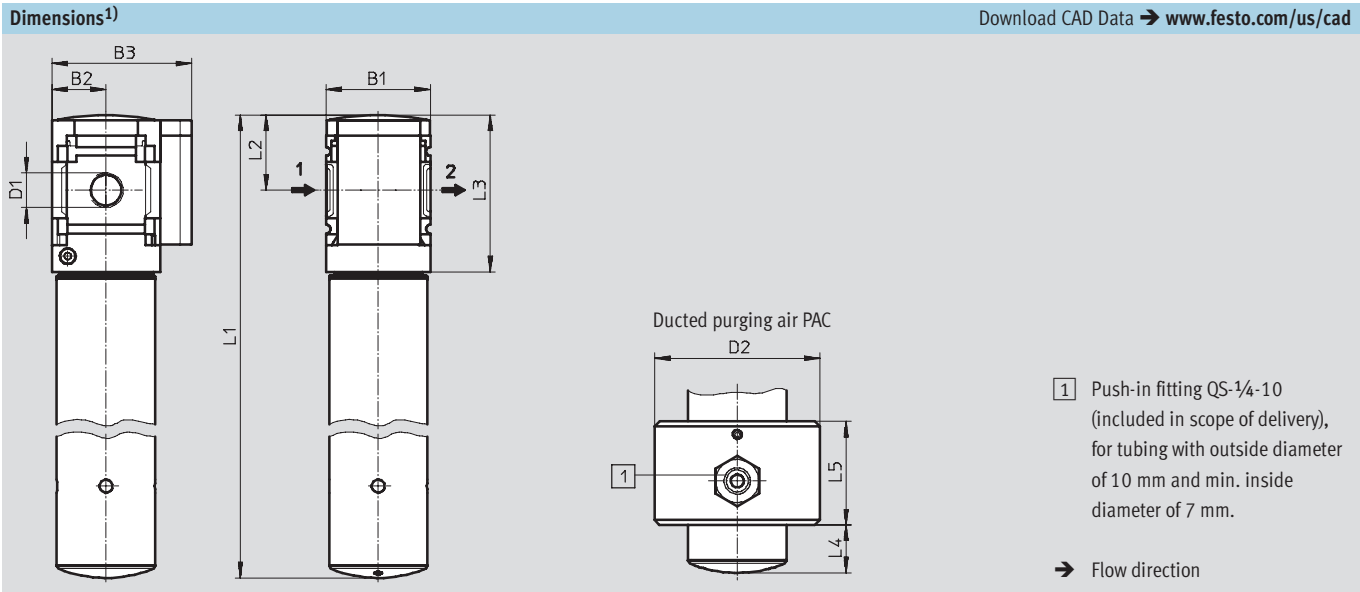
Sectional view



Membrane air dryer		
1	Housing	Die-cast aluminum
2	Bowl	Wrought aluminum alloy
-	Seals	Nitrile rubber

# Membrane Air Dryers MS4-LDM1 – Metric Series

Dimensional Drawings, Ordering Data – Pre-configured Products



Type	B1	B2	B3	D1	D2	L1	L2	L3	L4	L5
MS4-LDM1-1/8-P05	40	21	54	G1/8	64	245	29	60	18	40
MS4-LDM1-1/8-P10						345				
MS4-LDM1-1/4-P05	40	21	54	G1/4	64	245	29	60	18	40
MS4-LDM1-1/4-P10						345				

1) Dimensions are in millimeters, unless otherwise noted.

Note: This product conforms with the ISO 1179-1 standard and the ISO 228-1 standard.

Ordering Data				
Flow cartridge	Connection	Part No.	Type	LT
P10	G1/8	543630	MS4-LDM1-1/8-P10	Q
	G1/4	543632	MS4-LDM1-1/4-P10	Q

LT = Lead time      1D typically ships same day/next day      1W typically ships within 1 week      Q request a quote for lead time

# Membrane Air Dryers MS4-LDM1 – Metric Series

Ordering Data – Configurable Products

**FESTO**

M Mandatory Data						O Options		
Part No.	Series	Size	Function	Connection size	Flow cartridge	Purging air	Type of mounting	Reverse flow direction
543628	MS	4	LDM1	1/8, 1/4, AGA, AGB, AGC	P05 P10	PAC	WP WPM WB WBM	Z
<b>Order example</b>								
543628	MS	4	- LDM1	- AGC	- P10	-	- WP	-

Ordering Table					
Grid dimension	[mm]	40	Conditions	Code	Enter code
M	Part No.	543628			
	Series	Standard		MS	MS
	Size	4		4	4
	Function	Membrane dryer		-LDM1	-LDM1
	Connection size	Body thread G1/8		-1/8	
		Body thread G1/4		-1/4	
		Port plate G1/8 (dimensions → 314)		-AGA	
		Port plate G1/4 (dimensions → 314)		-AGB	
		Port plate G3/8 (dimensions → 314)		-AGC	
	Flow cartridge	50 l/min		-P05	
		100 l/min		-P10	
O	Purging air	Ducted purging air		-PAC	
	Type of mounting	Mounting bracket (dimensions → 315)	1	-WP	
		Mounting bracket (dimensions → 315)	1	-WPM	
		Mounting bracket (dimensions → 312)		-WB	
		Mounting bracket (dimensions → 312)		-WBM	
	Reverse flow direction	Flow direction from right to left		-Z	

1 WP, WPM Only with port plate AGA, AGB or AGC

Transfer order code

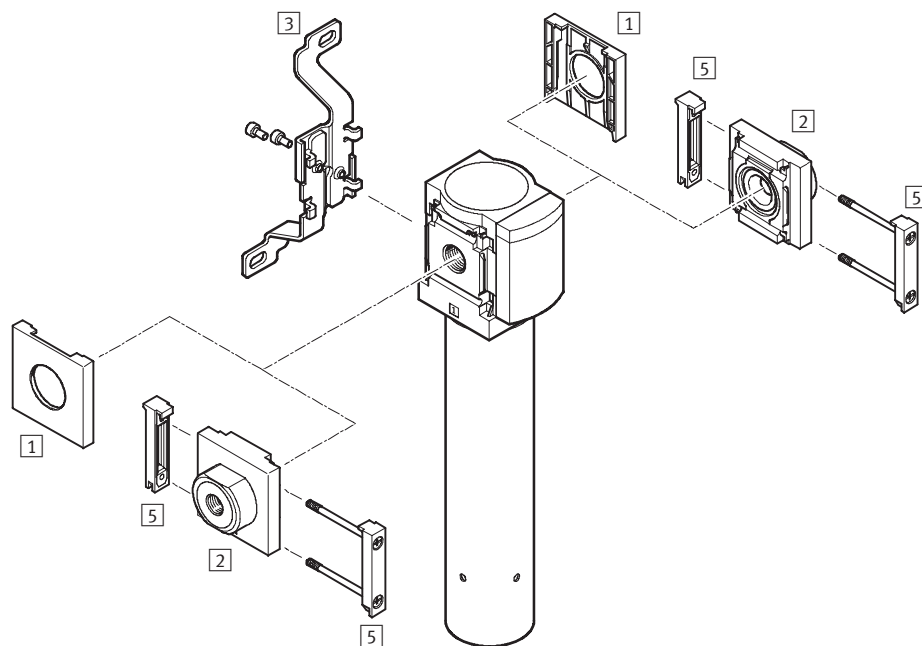
543628	MS	4	-	LDM1	-		-		-		-	
--------	----	---	---	------	---	--	---	--	---	--	---	--

# Membrane Air Dryers MS4-LDM1 – Metric Series

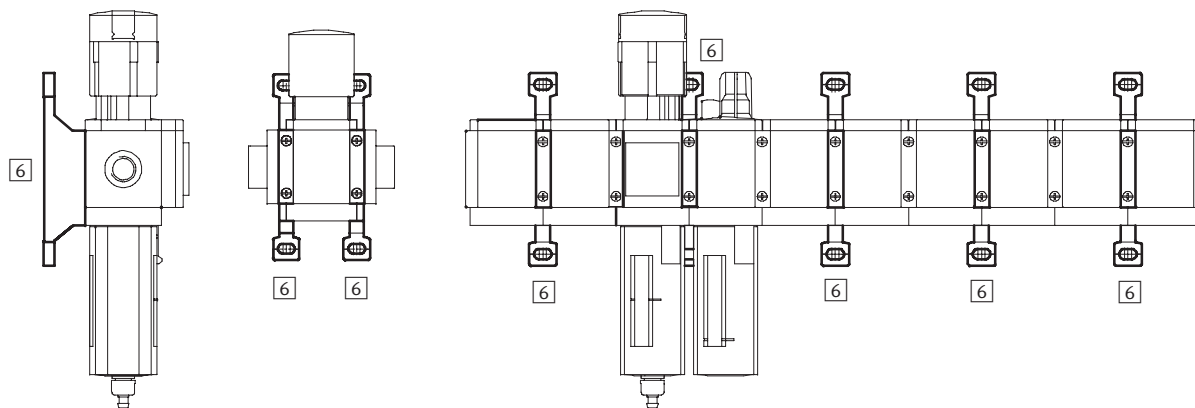
Accessories Overview

FESTO

## Mounting Attachments and Accessories



Single unit and combination unit mounting brackets.



# Membrane Air Dryers MS4-LDM1 – Metric Series

Accessories Overview



Mounting Attachments and Accessories						
		Single unit		Combination unit → 2.1-1		→ Page
		without port plate	with port plate	without port plate	with port plate	
1	Cover cap MS4-END	■	–	■	–	313
2	Port plate MS4-AG...	–	■	–	■	314
3	Mounting bracket MS4-WB	■	■	–	–	312
5	Body connector MS4-MV	–	■	■	■	314
–	Mounting bracket MS4-WBM	■	■	–	–	312
6	Mounting bracket MS4-WP/WPB/WPM	–	■	■	■	315

# Membrane Air Dryers MS4-LDM1 – Metric Series

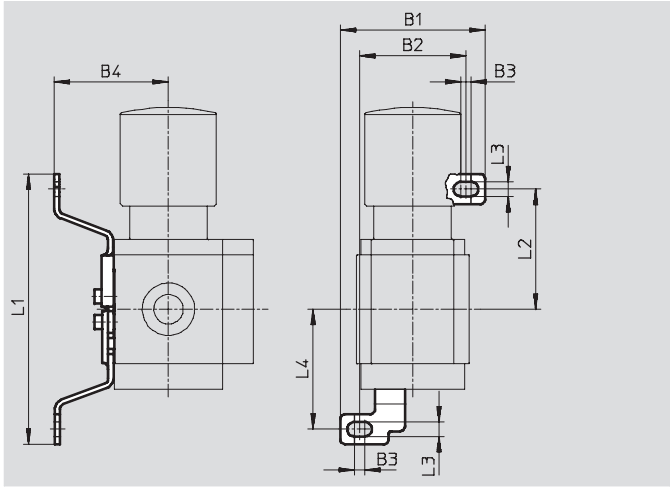
FESTO

Accessories

## 3 Mounting bracket MS4-WB

- For wall mounting

Material:  
Steel

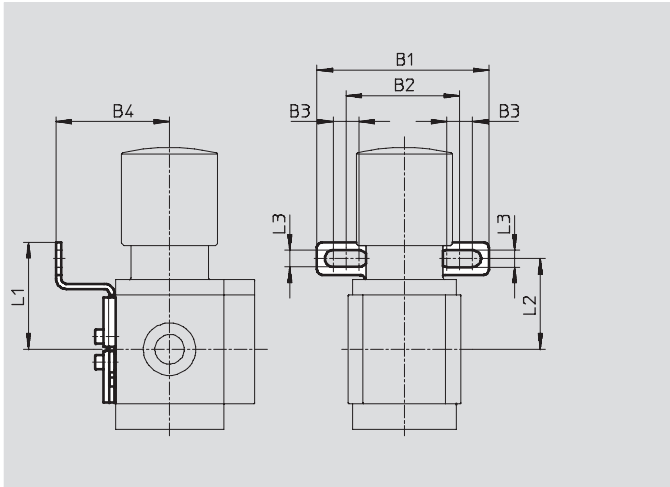


Dimensions and Ordering Data									
B1	B2	B3	B4	L1	L2	L3	L4	Weight [g]	Part No. Type
56.2	41.2	4	44.2	104.6	46.6	5.6	46.5	46	532185 MS4-WB

## Mounting bracket MS4-WBM

- For wall mounting

Material:  
Steel



Dimensions and Ordering Data									
B1	B2	B3	B4	L1	L2	L3	Weight [g]	Part No.	Type
66.5	44	10	44	41.3	35	6.5	48	526062	MS4-WBM



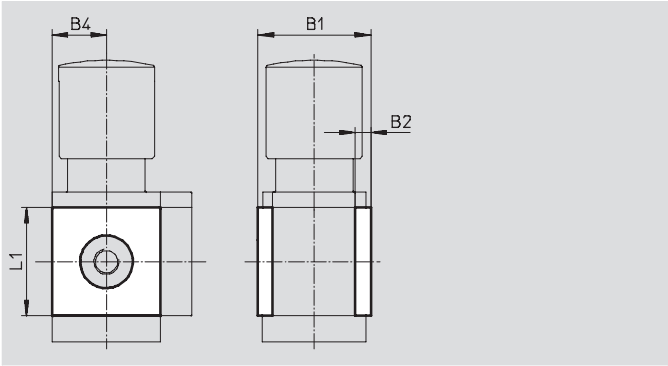
Membrane Air Dryers MS4-LDM1 – Metric Series

Accessories

1 Cover cap MS4-END

- Can be used to cover the body sides of the first and last module if port plates are not used.

Material:  
Reinforced polyamide  
Free of copper and PTFE

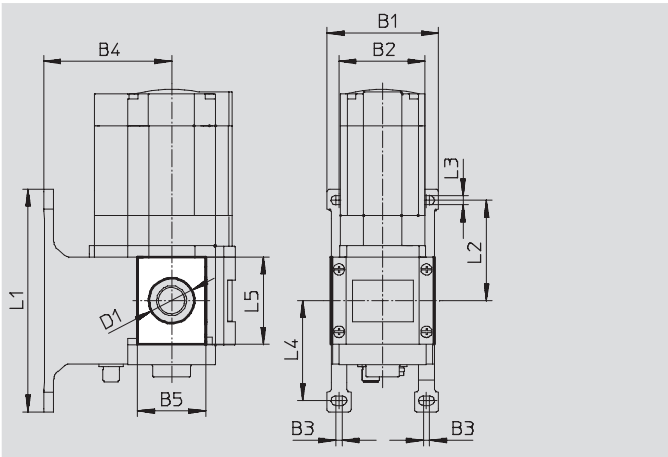


Dimensions and Ordering Data						
B1	B2	B4	L1	Part No.	Type	
43.6	6	21	42	538779	MS4-END	

Mounting plate MS4-AEND

- In combination with mounting bracket MS-WP or MS-WPB for mounting an individual unit on a wall with body thread

Material:  
Reinforced polyamide  
Conforms to RoHS  
Free of copper and PTFE



Dimensions and Ordering Data															
B1	B2	B3	B4		B5	D1 Ø	L1	L2	L3	L4	L5	CRC <sup>1)</sup>	Weight [g]	Part No.	Type
			WP	WPB											
55.2	40.2	4	44	66	30.4	20.3	106	46.5	5.6	46.7	42	2	4	542966	MS4-AEND

1) Corrosion resistance class 2 according to Festo standard 940 070  
Components requiring moderate corrosion resistance. Externally visible parts with primarily decorative surface requirements which are in direct contact with a normal industrial environment or media such as coolants or lubricating agents.

# Membrane Air Dryers MS4-LDM1 – Metric Series

Accessories

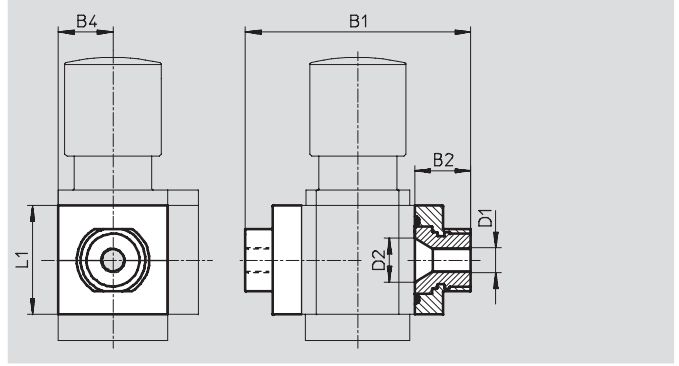
FESTO

## 2 Port plate MS4-AG...

- Adapter for pneumatic connection

Material:

Aluminum



Dimensions and Ordering Data								
B1	B2	B4	D1	D2	L1	Weight [g]	Part No.	Type
83.5	21.5	21	G $\frac{1}{8}$	16.8	42	128	526068	MS4-AGA
			G $\frac{1}{4}$				526069	MS4-AGB
			G $\frac{3}{8}$				526070	MS4-AGC

## 5 Body connector MS4-MV

- For connecting modules

Material:

Stainless steel/polyacetate



Ordering Data		
Weight [g]	Part No.	Type
36	532798	MS4-MV

# Membrane Air Dryers MS4-LDM1 – Metric Series

FESTO

Accessories

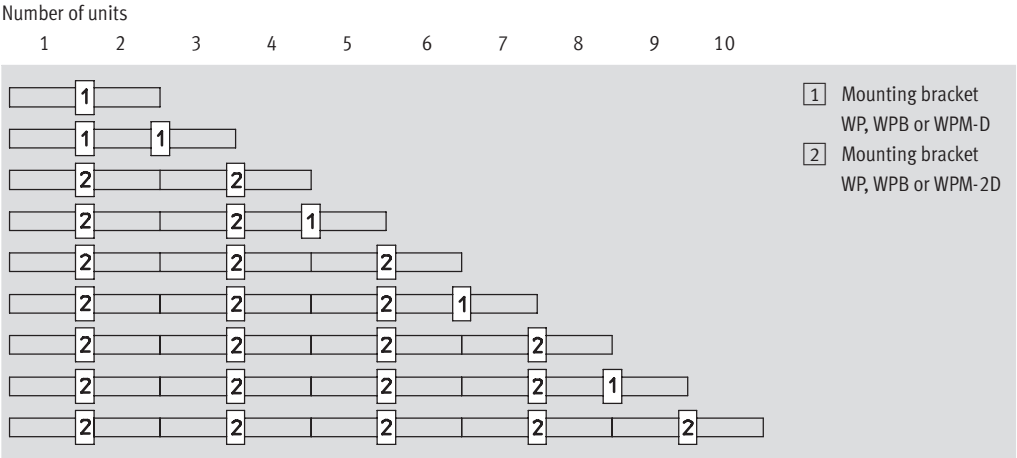
6

Mounting Bracket MS4-WP...

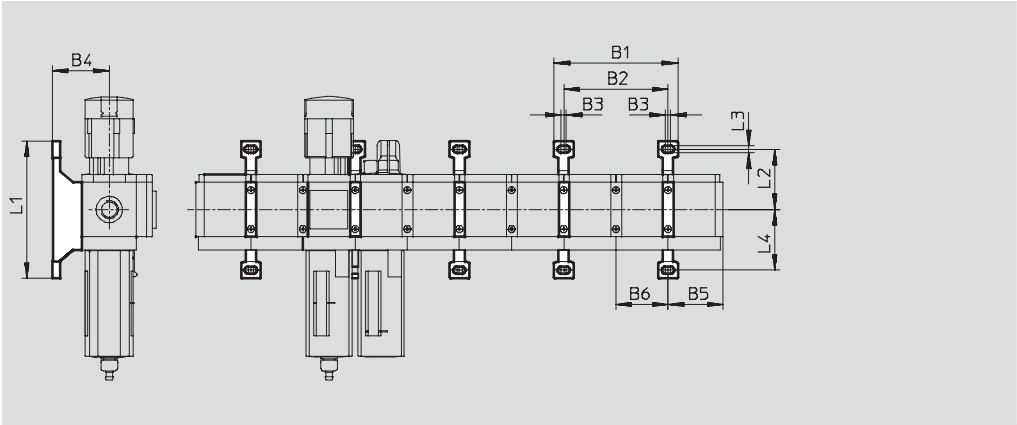
Suggested placement of wall mounting brackets when mounting air preparation combinations

1 unit: 40 mm

2 units: 80 mm



Mounting dimensions



Type	B1	B2	B3	B4	B5	B6	L1	L2	L3	L4
MS4-WP	95.2	80	4	44	41.9	40	106	46.5	5.6	46.7
MS4-WPB				66						
MS4-WPM-...D				44			92.8	34.8		40

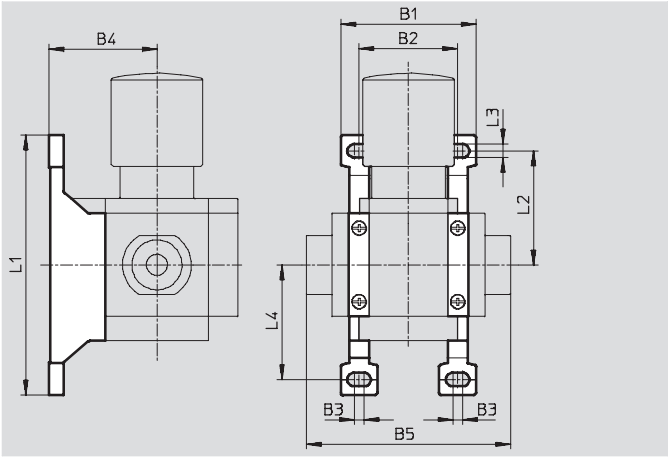
Membrane Air Dryers MS4-LDM1 – Metric Series

Accessories

Mounting bracket MS4-WP

- To connect the modules for wall mounting
- In combination with a port plate MS-AG... for mounting an individual unit on a wall
- In combination with mounting plate MS-AEND or for mounting an individual unit with body thread on a wall
- For pressure regulator LRB with angled outlet block B... at rear

Material:  
Die-cast aluminum

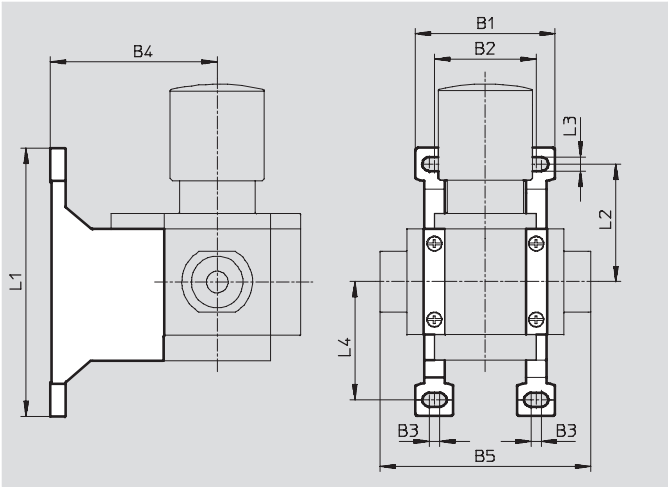


Dimensions and Ordering Data										Part No.	Type
B1	B2	B3	B4	B5	L1	L2	L3	L4	Weight [g]		
55.2	40.2	4	44	83.4	106	46.5	5.6	46.7	39	532184	MS4-WP

Mounting bracket MS4-WPB

- To connect the modules for wall mounting
- In combination with a port plate MS-AG... for mounting an individual unit on a wall
- In combination with mounting plate MS-AEND or for mounting an individual unit with direct thread on a wall
- Provides large wall gap for pressure regulator

Material:  
Die-cast aluminum



Dimensions and Ordering Data										Part No.	Type
B1	B2	B3	B4	B5	L1	L2	L3	L4	Weight [g]		
55.2	40.2	4	66	83.4	106	46.5	5.6	46.7	55	526063	MS4-WPB

# Membrane Air Dryers MS4-LDM1 – Metric Series

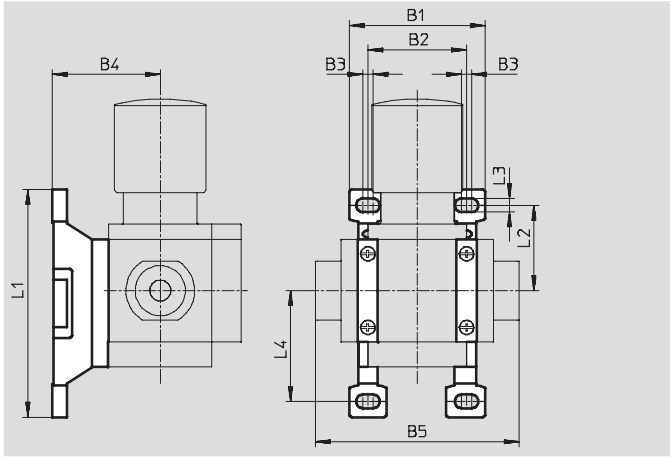
Accessories

## Mounting bracket MS4-WPM

- To connect the modules for wall mounting
- In combination with a port plate MS-AG... for mounting an individual unit on a wall
- Speedy attachment and detachment
- For installation of modules with regulating knob pointing downwards

The distance piece D or 2D (designated in the type code) is included in the scope of delivery and ensures the correct clearance

Material:  
Die-cast aluminum



Dimensions and Ordering Data											
B1	B2	B3	B4	B5	L1	L2	L3	L4	Clearance	Weight [g]	Part No. Type
55.2	40	4	44	83.4	92.8	34.8	5.6	45.2	40	45	526060 MS4-WPM-D
95.2	80			123.4					80	55	526061 MS4-WPM-2D

## Body connector MS4-MVM

- For installation of modules with regulating knob pointing downwards

Material:  
Die-cast aluminum



Ordering Data		
Size	Part No.	Type
MS4	532800	MS4-MVM



## Membrane Air Dryers MS4N-LDM1 – Inch Series

**FESTO**



Membrane air dryers remove water vapor from the compressed air and lower the dew point preventing moisture from forming downstream. Pre-filtration with a grade of 0.01 micron is required.

- Pneumatic connection: 1/8 NPT, 1/4 NPT, 3/8 NPT
- Pressure dew point reduction: 20 K
- Supply pressure: 44 ... 184 psi
- Flow rate: 1.8 ... 3.5 scfm

Product Range Overview						
Type	Flow rate [scfm]	Pneumatic connections		Bowl guard		Reverse flow
		Body thread	Port plate	Plastic bowl guard	Metal bowl	Flow direction from right to left
<b>MS4N</b>			<b>AG...</b>	<b>R</b>	<b>U</b>	<b>Z</b>
LDM1	1.8 ... 3.5	1/8 NPT, 1/4 NPT	1/8 NPT, 1/4 NPT, 3/8 NPT	–	■	■

### Features

- Optimum final dryer with excellent operational reliability
- Suitable for use as an individual unit or for integration in existing service unit combinations
- Flow rate-dependent dew point reduction
- Wear-free function requiring no external energy
- 15% purge air flow rate
- Optional purge ring for ducting of purging air

### Typical areas of application:

- Drying, cleaning of precision parts
- Measuring technology
- Rinsing of precision glass scales
- Painting systems
- Paper and packaging machines

### Contents

Technical Data	→ 320
Dimensional Drawings	→ 322
Ordering Data	→ 322
Accessories	→ 324

→ [www.festo.com/catalog/ms4n-ldm](http://www.festo.com/catalog/ms4n-ldm)

# Membrane Air Dryers MS4N-LDM1 – Inch Series

Technical Data

FESTO

ISO Symbol



## Note

Prefiltration of the compressed air using a micro filter MS-LFM-A, filtration grade 0.01 µm (residual particles < 0.1 µm, residual oil content < 0.1 mg/m<sup>3</sup>) is vital for flawless functioning of the unit.



## General Technical Data

Pneumatic connection 1, 2	1/8 NPT	1/4 NPT
Pressure dew point reduction [°F]	68	
Supply pressure [psi]	44 ... 184	

## Standard Flow Rate q<sub>n</sub><sup>1)</sup> [scfm]

	Cartridge P05	Cartridge P10
Input q <sub>n</sub> In	2.1	4.2
Output q <sub>n</sub> Out	1.8	3.5
Purge air q <sub>n</sub> Purge	0.3	0.6

1) Measured at p<sub>1</sub> = 102 psi, θ<sub>pd</sub> In = +77 °F, θ<sub>pd</sub> Out = +41 °F ± 3 °F (θ<sub>pd</sub> Out = -7 °F ± 2 °F), θ<sub>amb</sub> = +77 °F

## Operating and Environmental Conditions

Operating medium	Compressed air, air quality class 1.7.2 to DIN ISO 8573-1	
Ambient temperature [°F]	+36 ... +122	
Temperature of medium [°F]	+36 ... +122	
Storage temperature [°F]	-4 ... +140	
Assembly position	Vertical ±5°	
Corrosion resistance class CRC <sup>2)</sup>	2	

2) Corrosion resistance class 2 according to Festo standard 940 070  
Components requiring moderate corrosion resistance. Externally visible parts with primarily decorative surface requirements which are in direct contact with a normal industrial environment or media such as coolants or lubricating agents.

## Weights [lb]

	Cartridge P05	Cartridge P10
Membrane air dryer	0.84	1.06

- For spare parts go to: [www.festo.com/en/spare\\_parts\\_service](http://www.festo.com/en/spare_parts_service)



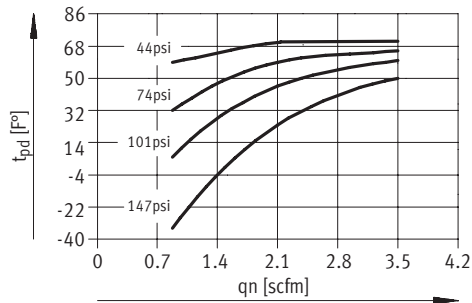
# Membrane Air Dryers MS4N-LDM1 – Inch Series

Technical Data

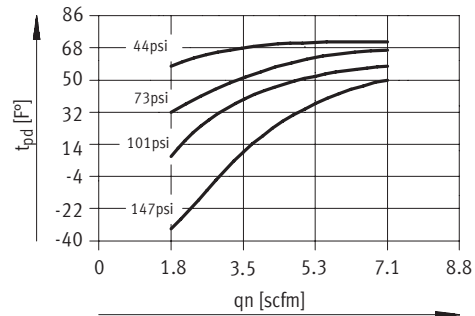
FESTO

## Pressure Dew Point $t_{pd}$ (Output) as a Function of the Standard Flow Rate at Output $q_n$

MS4N-LDM1-...-P05

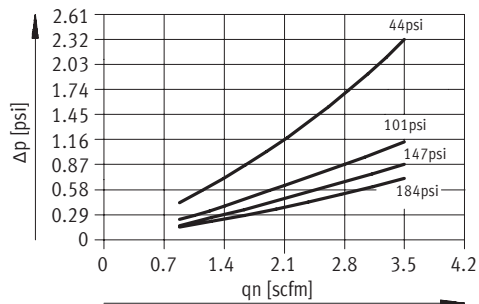


MS4N-LDM1-...-P10

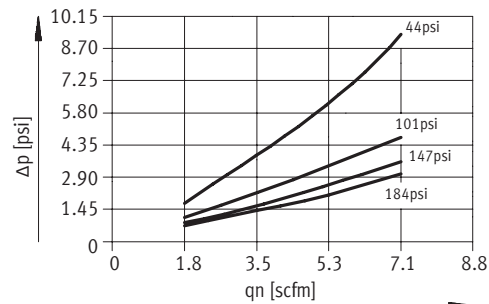


## Differential Pressure $\Delta p$ as a Function of the Standard Flow Rate at Output $q_n$

MS4N-LDM1-...-P05

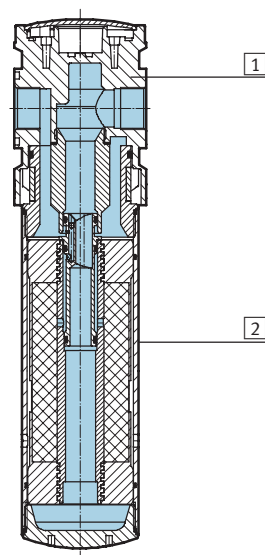


MS4N-LDM1-...-P10



## Materials

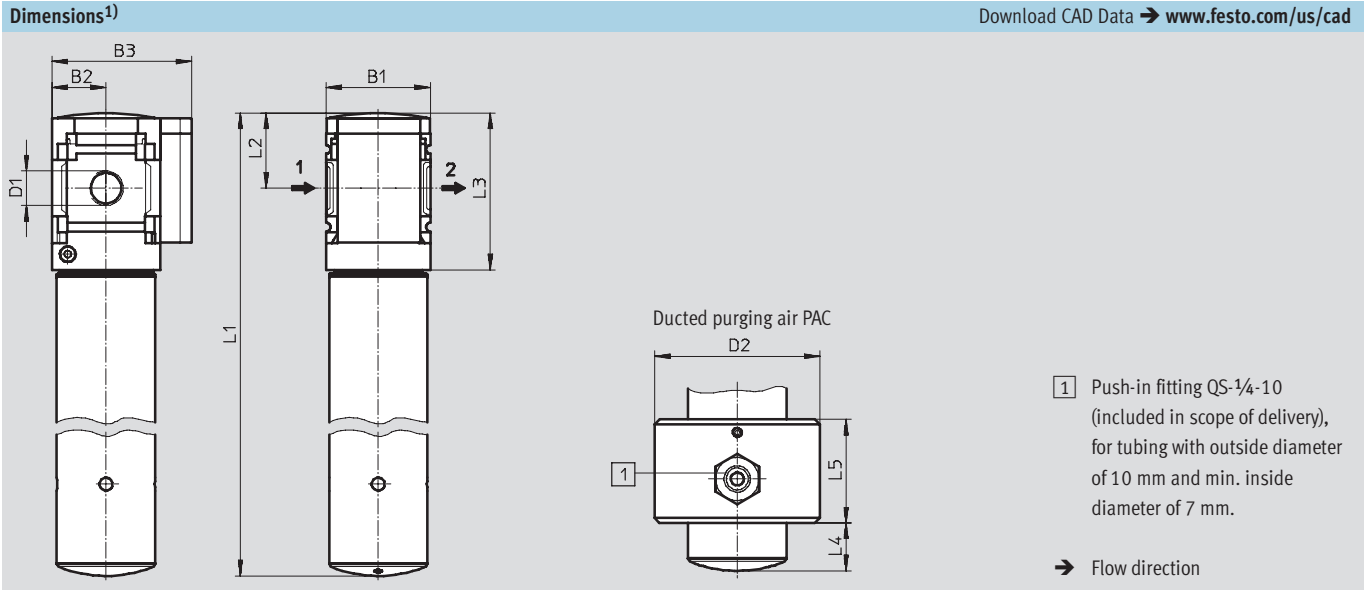
Sectional view



Membrane air dryer		
1	Housing	Die-cast aluminum
2	Bowl	Wrought aluminum alloy
-	Seals	Nitrile rubber

# Membrane Air Dryers MS4N-LDM1 – Inch Series

Dimensional Drawings, Ordering Data – Pre-configured Products



Type	B1	B2	B3	D1	D2	L1	L2	L3	L4	L5
MS4N-LDM1-1/8-P05	1.57	0.83	2.13	1/8 NPT	2.52	9.65	1.14	2.36	0.71	1.57
MS4N-LDM1-1/8-P10						13.58				
MS4N-LDM1-1/4-P05						9.65				
MS4N-LDM1-1/4-P10						13.58				

1) Dimensions are in inches, unless otherwise noted.

Ordering Data					
Flow cartridge	Connection	Part No.	Type	LT	
P10	1/8 NPT	543634	MS4N-LDM1-1/8-P10	Q	
	1/4 NPT	543636	MS4N-LDM1-1/4-P10	Q	

LT = Lead time      1D typically ships same day/next day      1W typically ships within 1 week      Q request a quote for lead time

# Membrane Air Dryers MS4N-LDM1 – Inch Series

Ordering Data – Configurable Products

FESTO

M Mandatory Data						O Options			
Part No.	Series	Size	Thread	Function	Connection size	Flow cartridge	Purging air	Type of mounting	Reverse flow direction
543629	MS	4	N	LDM1	1/8, 1/4, AQK, AQN, AQP	P05 P10	PAC	WP WPM WB WBM	Z
<b>Order example</b>									
543629	MS	4	N	- LDM1	- AQP	- P10	-	- WP	-

Ordering Table					
Grid dimension	[mm]	40	Conditions	Code	Enter code
M Part No.	543629				
Series	Standard			MS	MS
Size	4			4	4
Thread	NPT thread			N	N
Function	Membrane dryer			-LDM1	-LDM1
Connection size	Body thread 1/8 NPT			-1/8	
	Body thread 1/4 NPT			-1/4	
	Port plate 1/8 NPT (dimensions → 328)			-AQK	
	Port plate 1/4 NPT (dimensions → 328)			-AQN	
	Port plate 3/8 NPT (dimensions → 328)			-AQP	
Flow cartridge	1.8 scfm			-P05	
	3.5 scfm			-P10	
O Purging air	Ducted purging air			-PAC	
Type of mounting	Mounting bracket (dimensions → 329)		1	-WP	
	Mounting bracket (dimensions → 329)		1	-WPM	
	Mounting bracket (dimensions → 326)			-WB	
	Mounting bracket (dimensions → 326)			-WBM	
Reverse flow direction	Flow direction from right to left			-Z	

1 WP, WPM Only with port plate AQK, AQN or AQP

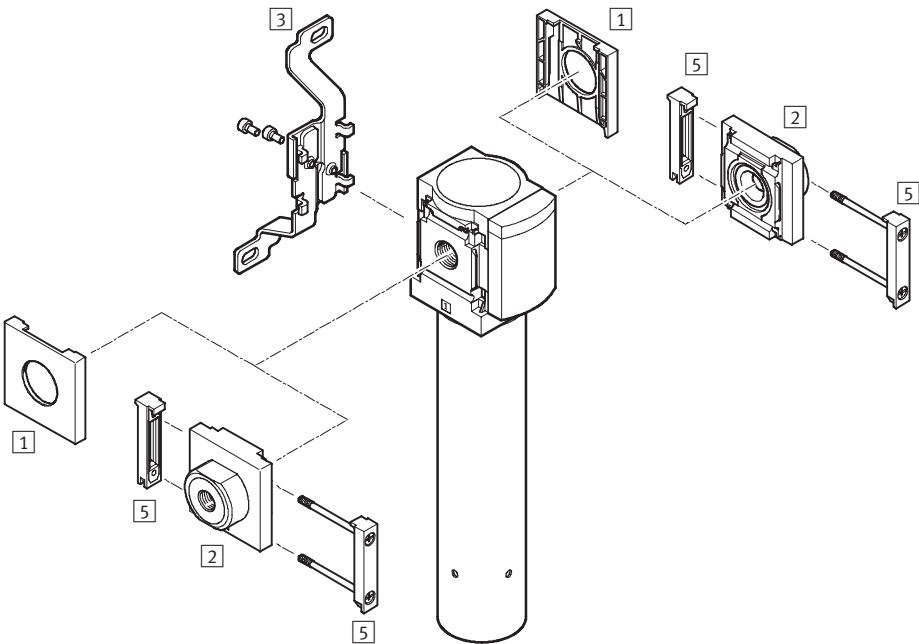
Transfer order code

543629	MS	4	N	-	LDM1	-		-		-		-	
--------	----	---	---	---	------	---	--	---	--	---	--	---	--

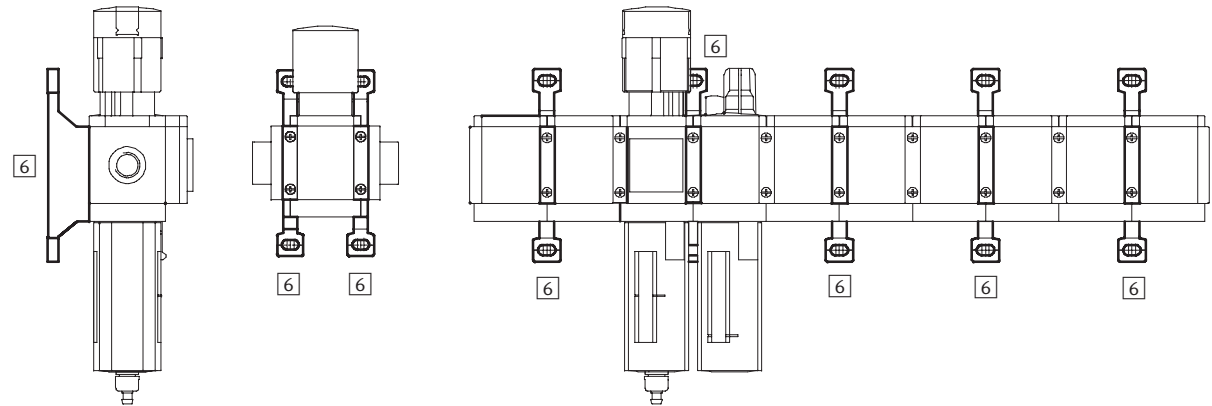
# Membrane Air Dryers MS4N-LDM1 – Inch Series

Accessories Overview

## Mounting Attachments and Accessories



Single unit and combination unit mounting brackets.



# Membrane Air Dryers MS4N-LDM1 – Inch Series

Accessories Overview



Mounting Attachments and Accessories						
		Single unit		Combination unit → 2.1-49		→ Page
		without port plate	with port plate	without port plate	with port plate	
1	Cover cap MS4-END	■	–	■	–	327
2	Port plate MS4N-AQ...	–	■	–	■	328
3	Mounting bracket MS4-WB	■	■	–	–	326
5	Body connector MS4-MV	–	■	■	■	328
–	Mounting bracket MS4-WBM	■	■	–	–	326
6	Mounting bracket MS4-WP/WPB/WPM	–	■	■	■	329

# Membrane Air Dryers MS4N-LDM1 – Inch Series

Accessories

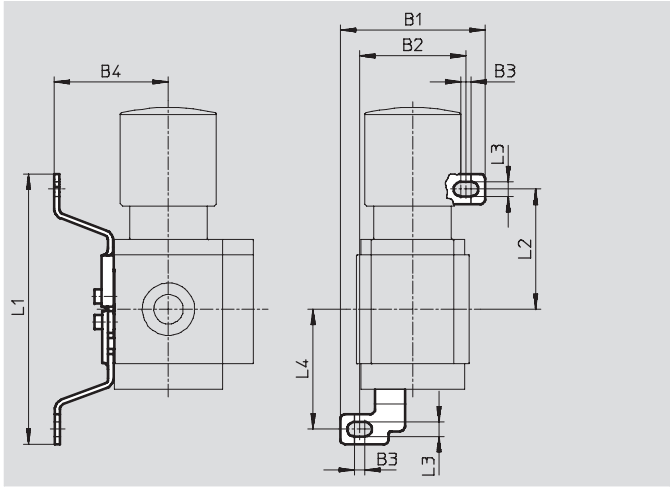
FESTO

## 3 Mounting bracket MS4-WB

- For wall mounting

Material:

Steel



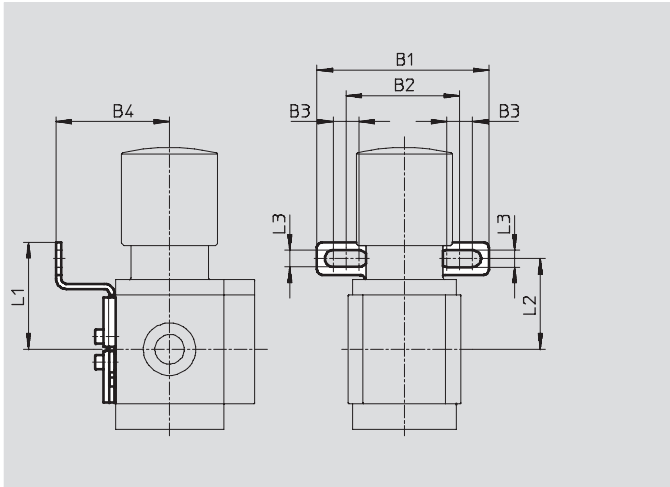
Dimensions and Ordering Data									
B1	B2	B3	B4	L1	L2	L3	L4	Weight [lb]	Part No. Type
2.21	1.62	0.16	1.74	4.12	1.83	0.22	1.83	0.09	532185 MS4-WB

## Mounting bracket MS4-WBM

- For wall mounting

Material:

Steel



Dimensions and Ordering Data									
B1	B2	B3	B4	L1	L2	L3	Weight [lb]	Part No.	Type
2.62	1.73	0.39	1.73	1.63	1.38	0.26	0.10	526062	MS4-WBM

# Membrane Air Dryers MS4N-LDM1 – Inch Series

Accessories

FESTO

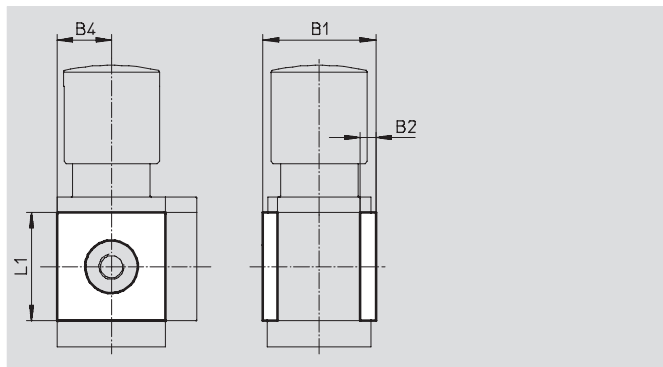
## 1 Cover cap MS4-END

- Can be used to cover the body sides of the first and last module if port plates are not used.

Material:

Reinforced polyamide

Free of copper and PTFE



### Dimensions and Ordering Data

B1	B2	B4	L1	Part No.	Type
1.72	0.24	0.83	1.65	538779	MS4-END

## Mounting plate MS4-AEND

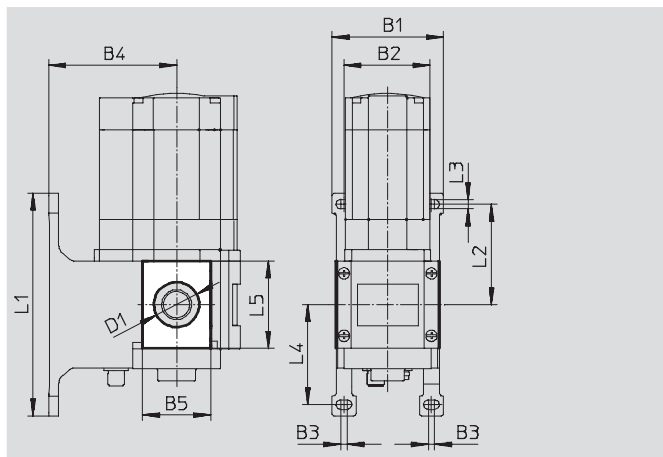
- In combination with mounting bracket MS-WP or MS-WPB for mounting an individual unit on a wall with body thread

Material:

Reinforced polyamide

Conforms to RoHS

Free of copper and PTFE



### Dimensions and Ordering Data

B1	B2	B3	B4		B5	D1	L1	L2	L3	L4	L5	CRC <sup>1)</sup>	Weight [lb]	Part No.	Type
			WP	WPB		Ø									
2.17	1.58	0.16	1.73	2.60	1.20	0.80	4.17	1.83	0.22	1.84	1.65	2	0.01	542966	MS4-AEND

1) Corrosion resistance class 2 according to Festo standard 940 070

Components requiring moderate corrosion resistance. Externally visible parts with primarily decorative surface requirements which are in direct contact with a normal industrial environment or media such as coolants or lubricating agents.

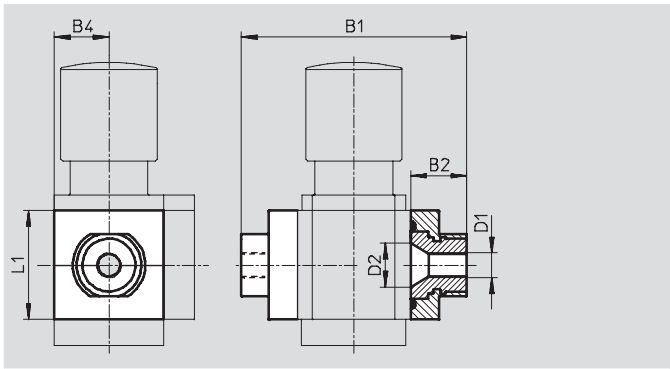
Membrane Air Dryers MS4N-LDM1 – Inch Series

Accessories

2 Port plate MS4N-AQ...

- Adapter for pneumatic connection

Material:  
Aluminum



Dimensions and Ordering Data								
B1	B2	B4	D1	D2	L1	Weight [lb]	Part No.	Type
3.29	0.85	0.83	1/8 NPT	0.66	1.65	0.26	526065	MS4N-AQK
			1/4 NPT				526066	MS4N-AQN
			3/8 NPT				526067	MS4N-AQP

5 Body connector MS4-MV

- For connecting modules

Material:  
Stainless steel/polyacetate



Ordering Data		
Weight [lb]	Part No.	Type
0.07	532798	MS4-MV



# Membrane Air Dryers MS4N-LDM1 – Inch Series

Accessories

FESTO

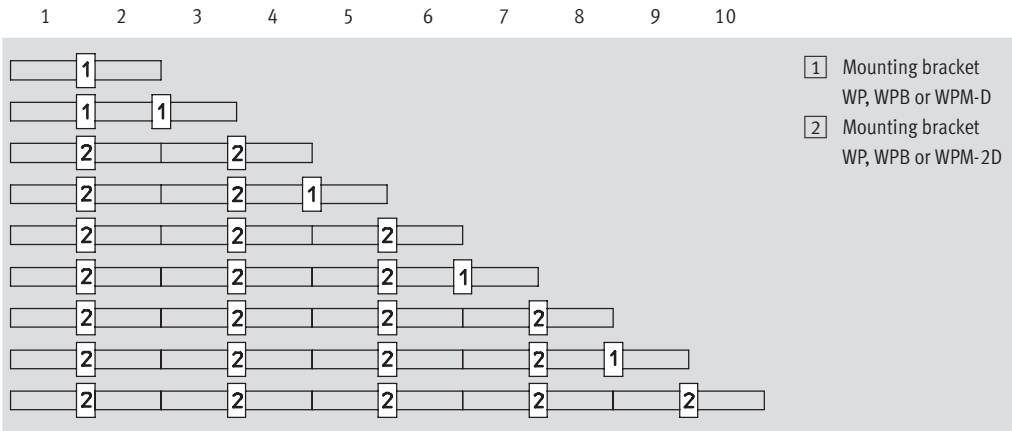
## 6 Mounting Bracket MS4-WP...

Suggested placement of wall mounting brackets when mounting air preparation combinations

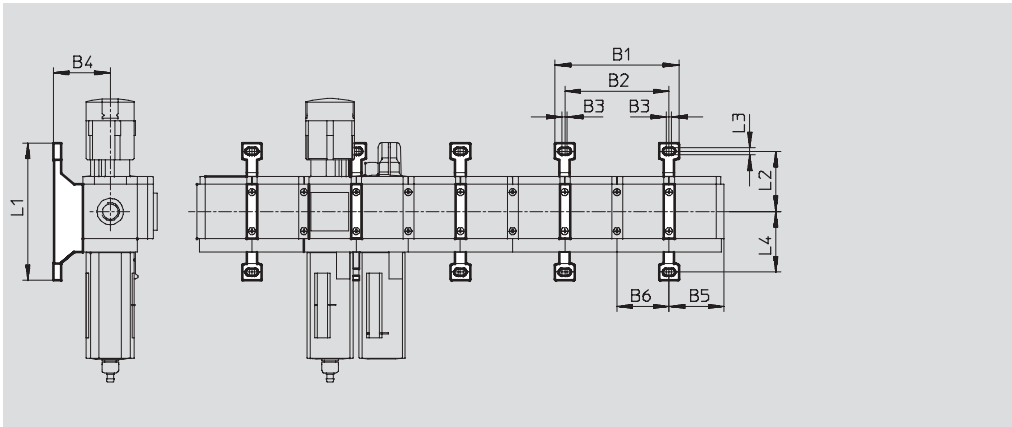
1 unit: 1.575 in

2 units: 3.15 in

Number of units



## Mounting dimensions



Type	B1	B2	B3	B4	B5	B6	L1	L2	L3	L4
MS4-WP	3.75	3.15	0.16	1.73	1.65	1.57	4.17	1.83	0.22	1.84
MS4-WPB				2.60						
MS4-WPM-...D				1.73						1.57

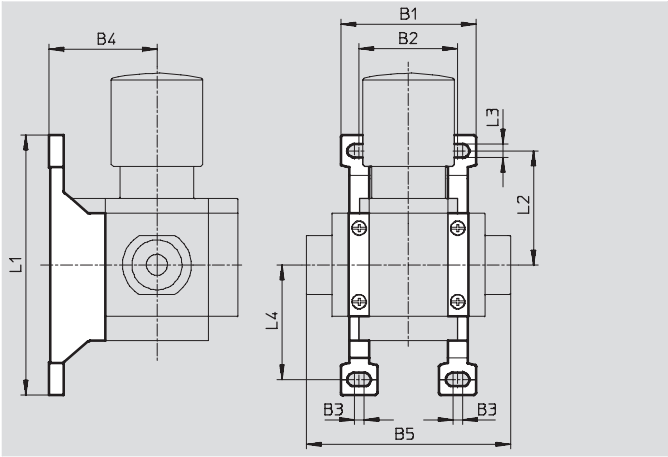
Membrane Air Dryers MS4N-LDM1 – Inch Series

Accessories

Mounting bracket MS4-WP

- To connect the modules for wall mounting
- In combination with a port plate MS-AG... for mounting an individual unit on a wall
- In combination with mounting plate MS-AEND or for mounting an individual unit with body thread on a wall
- For pressure regulator LRB with angled outlet block B... at rear

Material:  
Die-cast aluminum

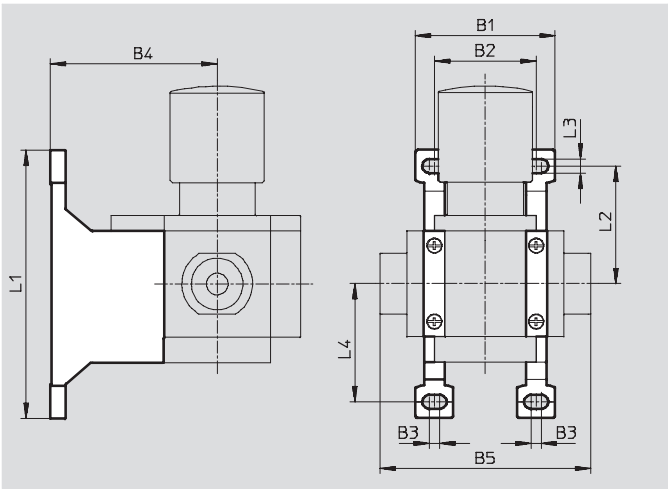


Dimensions and Ordering Data										Part No.	Type
B1	B2	B3	B4	B5	L1	L2	L3	L4	Weight [lb]		
2.17	1.58	0.16	1.73	3.28	4.17	1.83	0.22	1.84	0.08	532184	MS4-WP

Mounting bracket MS4-WPB

- To connect the modules for wall mounting
- In combination with a port plate MS-AG... for mounting an individual unit on a wall
- In combination with mounting plate MS-AEND or for mounting an individual unit with direct thread on a wall
- Provides large wall gap for pressure regulator

Material:  
Die-cast aluminum



Dimensions and Ordering Data										Part No.	Type
B1	B2	B3	B4	B5	L1	L2	L3	L4	Weight [lb]		
2.17	1.58	0.16	2.60	3.28	4.17	1.83	0.22	1.84	0.11	526063	MS4-WPB

# Membrane Air Dryers MS4N-LDM1 – Inch Series

Accessories

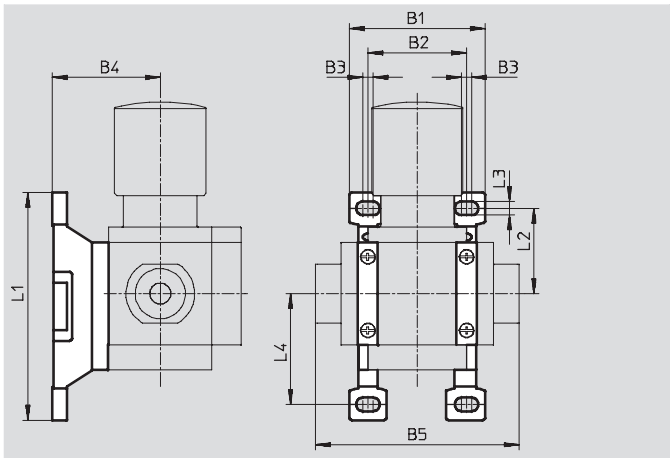
## Mounting bracket MS4-WPM

- To connect the modules for wall mounting
- In combination with a port plate MS-AG... for mounting an individual unit on a wall
- Speedy attachment and detachment
- For installation of modules with regulating knob pointing downwards

The distance piece D or 2D (designated in the type code) is included in the scope of delivery and ensures the correct clearance

Material:

Die-cast aluminum



Dimensions and Ordering Data												
B1	B2	B3	B4	B5	L1	L2	L3	L4	Clearance	Weight [lb]	Part No.	Type
2.17	1.57	0.16	1.73	3.28	3.65	1.37	0.22	1.78	1.57	0.09	526060	MS4-WPM-D
3.75	3.15			4.86					3.15	0.11	526061	MS4-WPM-2D

## Body connector MS4-MVM

- For installation of modules with regulating knob pointing downwards

Material:

Die-cast aluminum



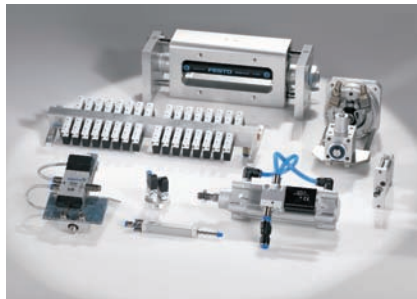
Ordering Data		
Size	Part No.	Type
MS4	532800	MS4-MVM



# Product Range and Company Overview

## A Complete Suite of Automation Services

Our experienced engineers provide complete support at every stage of your development process, including: conceptualization, analysis, engineering, design, assembly, documentation, validation, and production.



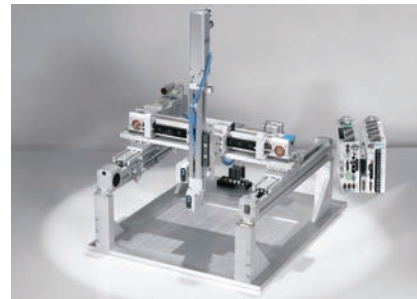
### Custom Automation Components

Complete custom engineered solutions



### Custom Control Cabinets

Comprehensive engineering support and on-site services

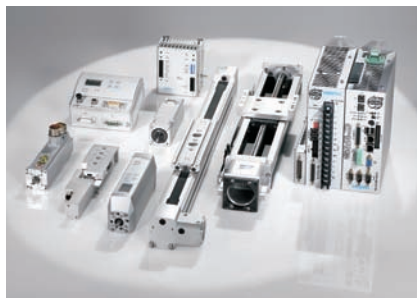


### Complete Systems

Shipment, stocking and storage services

## The Broadest Range of Automation Components

With a comprehensive line of more than 30,000 automation components, Festo is capable of solving the most complex automation requirements.



### Electromechanical

Electromechanical actuators, motors, controllers & drives



### Pneumatics

Pneumatic linear and rotary actuators, valves, and air supply



### PLCs and I/O Devices

PLC's, operator interfaces, sensors and I/O devices

## Supporting Advanced Automation... As No One Else Can!

Festo is a leading global manufacturer of pneumatic and electromechanical systems, components and controls for industrial automation, with more than 11,500 employees in 56 national headquarters serving more than 180 countries. For more than 80 years, Festo has continuously elevated the state of manufacturing with innovations and optimized motion control solutions that deliver higher performing, more profitable automated manufacturing and processing equipment. Our dedication to the advancement of automation extends beyond technology to the education and development of current and future automation and robotics designers with simulation tools, teaching programs, and on-site services.

## Quality Assurance, ISO 9001 Certification

Festo Corporation is committed to provide Festo products and services that will meet or exceed our customers' requirements in product quality, delivery, customer service and satisfaction.

All Festo locations within the United States are registered to ISO 9001.



© Copyright 2007, Festo Corporation. While every effort is made to ensure that all dimensions and specifications are correct, Festo cannot guarantee that publications are completely free of any error, in particular typing or printing errors. Accordingly, Festo cannot be held responsible for the same. For Liability and Warranty conditions, refer to our "Terms and Conditions of Sale", available from your local Festo office. All rights reserved. No part of this publication may be reproduced, distributed, or transmitted in any form or by any means, electronic, mechanical, photocopying or otherwise, without the prior written permission of Festo. All technical data subject to change according to technical update.

# Festo North America

## United States

### Customer Resource Center

502 Earth City Expy., Suite 125  
Earth City, MO 63045

For ordering assistance, or to find  
your nearest Festo Distributor,

**Call:** 1.800.99.FESTO

**Fax:** 1.800.96.FESTO

**Email:** [customer.service@us.festo.com](mailto:customer.service@us.festo.com)

For technical support,

**Call:** 1.866.GO.FESTO

**Fax:** 1.800.96.FESTO

**Email:** [product.support@us.festo.com](mailto:product.support@us.festo.com)

### Headquarters

Festo Corporation  
395 Moreland Road  
P.O. Box 18023  
Hauppauge, NY 11788  
[www.festo.com/us](http://www.festo.com/us)

### Sales Offices

#### Appleton

N. 922 Tower View Drive, Suite N  
Greenville, WI 54942

#### Boston

120 Presidential Way, Suite 330  
Woburn, MA 01801

#### Chicago

1441 East Business Center Drive  
Mt. Prospect, IL 60056

#### Dallas

1825 Lakeway Drive, Suite 600  
Lewisville, TX 75057

#### Detroit - Automotive Engineering Center

2601 Cambridge Court, Suite 320  
Auburn Hills, MI 48326

#### New York

395 Moreland Road  
Hauppauge, NY 11788

#### Silicon Valley

2800 Collier Canyon Road  
Livermore, CA 94550

## Design and Manufacturing Operations



**East:** 395 Moreland Road, Hauppauge, NY 11788



**Central:** 1441 East Business Center Drive, Mt. Prospect, IL 60056



**West:** 2800 Collier Canyon Road, Livermore, CA 94550

## Mexico

### Headquarters

Festo Pneumatic, S.A.  
Av. Ceylán 3, Col. Tequesquahuac  
54020 Tlalnepantla, Edo. de México  
Call: 011 52 [55] 53 21 66 00  
Fax: 011 52 [55] 53 21 66 65  
Email: [festo.mexico@mx.festo.com](mailto:festo.mexico@mx.festo.com)  
[www.festo.com/mx](http://www.festo.com/mx)



## Canada

### Headquarters

Festo Inc.  
5300 Explorer Drive  
Mississauga, Ontario L4W 5G4  
Call: 1.905.624.9000  
Fax: 1.905.624.9001  
Email: [info.ca@ca.festo.com](mailto:info.ca@ca.festo.com)  
[www.festo.com/ca](http://www.festo.com/ca)



## Festo Worldwide

Argentina Australia Austria Belarus Belgium Brazil Bulgaria Canada Chile China Colombia Croatia Czech Republic Denmark  
Estonia Finland France Germany Great Britain Greece Hong Kong Hungary India Indonesia Iran Ireland Israel Italy Japan  
Latvia Lithuania Malaysia Mexico Netherlands New Zealand Norway Peru Philippines Poland Romania Russia Serbia Singapore  
Slovakia Slovenia South Africa South Korea Spain Sweden Switzerland Taiwan Thailand Turkey Ukraine United States Venezuela

[www.festo.com](http://www.festo.com)