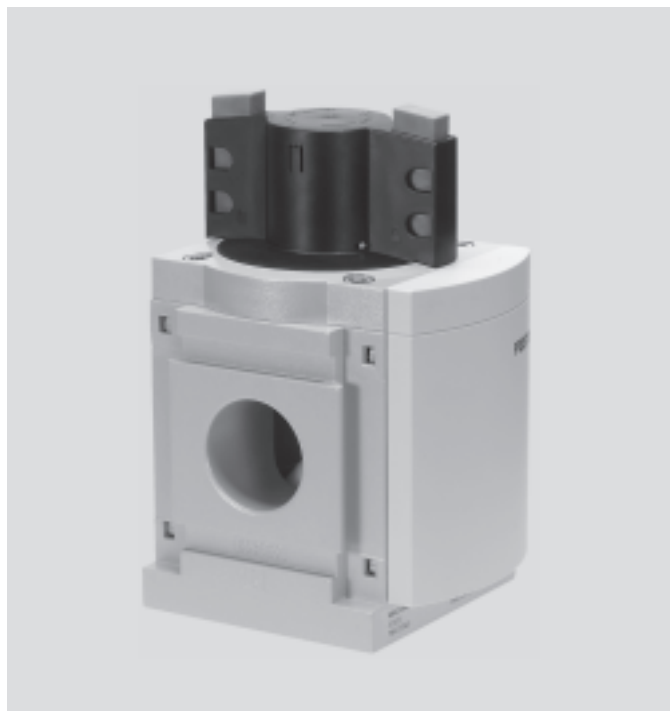


On-off/Soft-start Valves MS12-EM/EE/DL/DE – Metric Series

FESTO



Manually operated and solenoid actuated on-off valves for pressurizing and venting pneumatic installations. Pneumatic and solenoid actuated soft-start valves for slowly pressurizing and venting pneumatic installations.

- On-off valves
 - MS12-EM, manually operated
 - MS12-EE, solenoid actuated
- Soft-start valves
 - MS12-DL, pneumatically actuated
 - MS12-DE, solenoid actuated
- Pneumatic connection: G1, G1¼, G1½, G2
- Operating pressure
 - EM: 0 ... 21 bar
 - EE and DE: 3 ... 16 bar
 - DL: 2 ... 21 bar
- Flow rate: 25,000 ... 42,000 l/min

Product Range Overview														
Type	Flow rate [l/min]	Pneumatic connections		Supply voltage				Pressure indicator					Options	
		Body thread	Port plate	24 V DC (connection pattern to EN 175301)	24 V DC (connection pattern M12 to DESINA)	110 V AC (connection pattern to EN 175301)	230 V AC (connection pattern to EN 175301)	Cover plate (without pressure gauge)	Integrated MS pressure gauge	Adapter for pressure gauge G1/8	Adapter for pressure gauge G1/4	Pressure sensor with display	Silencer	Flow direction from right to left
MS12			AG...	V24	V24P	V110	V230	VS	AG	A8	A4	AD...	S	Z
EM	25,000 ... 32,000	–	G1, G1¼, G1½, G2	–	–	–	–	■	■	–	■	–	■	■
EE	25,000 ... 32,000	–	G1, G1¼, G1½, G2	■	■	■	■	■	■	–	■	–	■	■
DL	25,000 ... 42,000	–	G1, G1¼, G1½, G2	–	–	–	–	■	■	–	■	–	–	■
DE	25,000 ... 42,000	–	G1, G1¼, G1½, G2	■	■	■	■	■	■	–	■	–	–	■

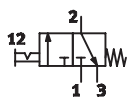
Contents			
MS12-EM		MS12-EE	
Technical Data	→ 1192	Technical Data	→ 1196
Dimensional Drawings	→ 1193	Dimensional Drawings	→ 1197
Ordering Data	→ 1194	Ordering Data	→ 1198
Accessories	→ 1208	Accessories	→ 1208
→ www.festo.com/catalog/ms12-em		→ www.festo.com/catalog/ms12-ee	
MS12-DL		MS12-DE	
Technical Data	→ 1200	Technical Data	→ 1204
Dimensional Drawings	→ 1202	Dimensional Drawings	→ 1206
Ordering Data	→ 1202	Ordering Data	→ 1206
Accessories	→ 1208	Accessories	→ 1208
→ www.festo.com/catalog/ms12-dl		→ www.festo.com/catalog/ms12-de	

On-off Valves MS12-EM – Metric Series

Technical Data

FESTO

ISO Symbol



- Manually operated on-off valve for pressurizing and venting pneumatic installations
- Ducted exhaust possible via a threaded connection with silencer
- The switching position is immediately recognizable
- Actuator secured by locking the rotary knob
- Commercially available padlock can be used for security



General Technical Data				
Pneumatic connection 1, 2 ¹⁾	G1	G1¼	G1½	G2
Pneumatic connection 3	G1			
Operating pressure [bar]	0 ... 21			

1) Dependent on port plate selected, must be ordered separately as an accessory → 1210

Note: This product conforms with the ISO 1179-1 standard and the ISO 228-1 standard.

Standard Nominal Flow Rate q _N ²⁾ [l/min]	
In main flow direction 1 → 2	25,000 ... 32,000
In relief direction 2 → 3	13,000

2) Measured at p₁ = 6 bar and Δp = 1 bar

Operating and Environmental Conditions	
Operating medium	Compressed air
Exhaust function	Without flow control
Switching position display	Knob actuator direction = flow direction
Ambient temperature [°C]	–10 ... +60
Temperature of medium [°C]	–10 ... +60
Corrosion resistance CRC ³⁾	2

3) Corrosion resistance class 2 according to Festo standard 940 070
Components requiring moderate corrosion resistance. Externally visible parts with primarily decorative surface requirements which are in direct contact with a normal industrial environment or media such as coolants or lubricating agents.

Weights [g]	
Standard	3,900
With silencer	4,000

- For spare parts go to: www.festo.com/en/spare_parts_service

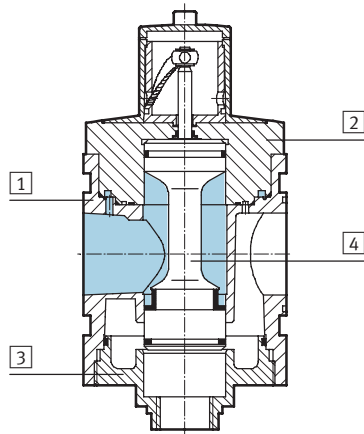
On-off Valves MS12-EM – Metric Series

Technical Data, Dimensional Drawings

FESTO

Materials

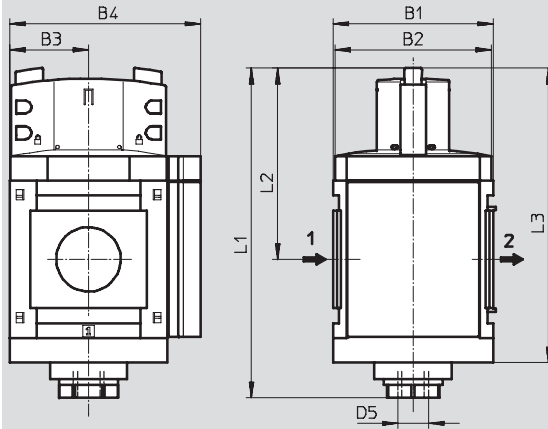
Sectional view



On-off valve		
1	Body	Die-cast aluminum
2	Cap, top	Aluminum
3	Cap, bottom	Aluminum
4	Valve spool	Stainless steel, polyacetate, nitrile rubber
-	Springs	Steel
-	Covers/cover plates	Polyamide
-	Seals	Nitrile rubber
Note on materials		Free of copper and PTFE (not with variant AG)

Dimensions¹⁾ – Standard

Download CAD Data → www.festo.com/us/cad



→ Flow direction

B1	B2	B3	B4	L1	L2	L3	D5
124	122	61	148	255	148	228	G1

1) Dimensions are in millimeters, unless otherwise noted.

Note: This product conforms with the ISO 1179-1 standard and the ISO 228-1 standard.

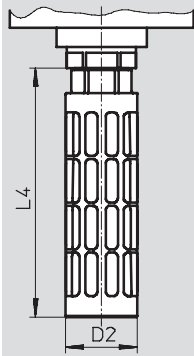
On-off Valves MS12-EM – Metric Series

Dimensional Drawings, Ordering Data – Pre-configured Products

FESTO

Dimensions¹⁾ – Silencer

Download CAD Data → www.festo.com/us/cad



Type	D2 Ø	L4
MS12-EM-...-S	47.8	165.5

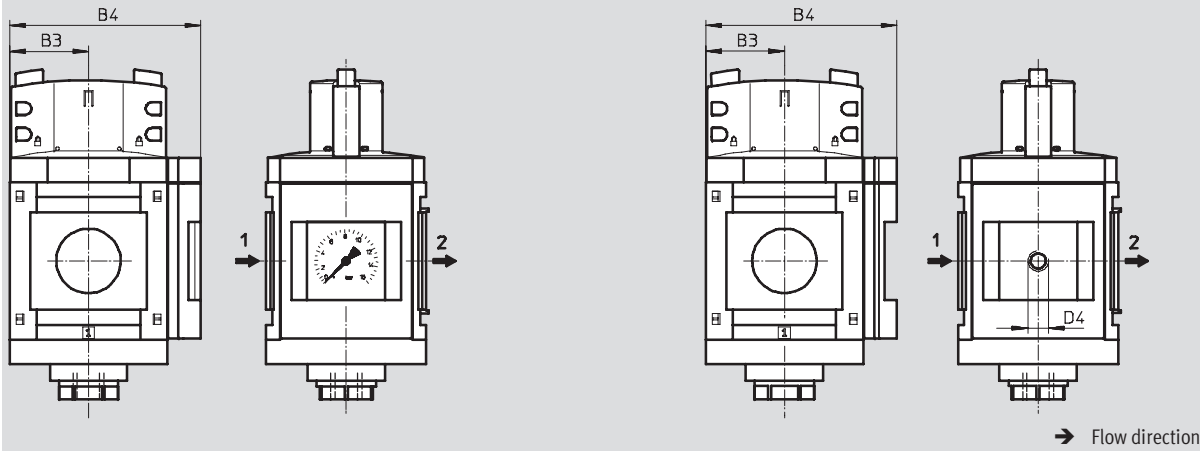
1) Dimensions are in millimeters, unless otherwise noted.

Dimensions¹⁾ – Pressure Gauges/Adapters

Download CAD Data → www.festo.com/us/cad

Integrated MS pressure gauge AG, display unit [bar]

Adapter A4 for EN pressure gauge 1/4, without pressure gauge



Type	B3	B4	D4
MS12-EM-...-AG	61	148	–
MS12-EM-...-A4	61	148	G1/4

1) Dimensions are in millimeters, unless otherwise noted.

Ordering Data			
Connection	Part No.	Type	LT
G1 ... G2 ²⁾	541495	MS12-EM-G ³⁾	Q

LT = Lead time 1D typically ships same day/next day 1W typically ships within 1 week Q request a quote for lead time

2) Port plate must be ordered separately as an accessory → 1210

3) Free of copper and PTFE

Note: This product conforms with the ISO 1179-1 standard and the ISO 228-1 standard.

On-off Valves MS12-EM – Metric Series

Ordering Data – Configurable Products



M Mandatory Data					O Options				
Part No.	Series	Size	Function	Connection size	Silencer	Pressure gauge/adaptor	Alternative pressure gauge scale	Type of mounting	Reverse flow direction
535031	MS	12	EM	AGF AGG AGH AGI G	S	AG A4	PSI MPA	WP	Z
Order example									
535031	MS	12	- EM	- G	- S	- AG	- PSI	-	- Z

Ordering Table					
Grid dimension		[mm]	124	Conditions	Code
Enter code					
M	Part No.	535031			
	Series	Standard			MS
	Size	12			12
	Function	On-off valve, manual			-EM
	Connection size	Port plate G1 (dimensions → 1210)			-AGF
		Port plate G1¼ (dimensions → 1210)			-AGG
		Port plate G1½ (dimensions → 1210)			-AGH
		Port plate G2 (dimensions → 1210)			-AGI
		Module without connecting thread, without connecting plate			-G
O	Silencer	Silencer			-S
	Pressure gauge/adaptor	MS pressure gauge, bar			-AG
		Adapter plate for EN pressure gauge ¼, without pressure gauge			-A4
	Alternative pressure gauge scale	psi	1		-PSI
		MPa	1		-MPA
	Type of mounting	Mounting bracket (dimensions → 1211)	2		-WP
	Reverse flow direction	Flow direction from right to left			-Z

1 PSI, MPA Only with pressure gauge AG

2 WP Only with port plate AGF, AGG, AGH or AGI

Transfer order code

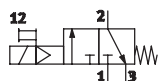
535031	MS	12	- EM	-	-	-	-	-	-	-
--------	----	----	------	---	---	---	---	---	---	---

On-off Valves MS12-EE – Metric Series

Technical Data

FESTO

ISO Symbol



- Solenoid actuated on-off valve for pressurizing and venting pneumatic installations
- Solenoid coil without plug socket, three voltage ranges available.
- Ducted exhaust possible via a threaded connection with silencer
- Non-detenting manual override (except variant V24P)



General Technical Data				
Pneumatic connection 1, 2 ¹⁾	G1	G1¼	G1½	G2
Pneumatic connection 3	G1			
Operating pressure [bar]	3 ... 16			

1) Dependent on port plate selected, must be ordered separately as an accessory → 1210

Note: This product conforms with the ISO 1179-1 standard and the ISO 228-1 standard.

Standard Nominal Flow Rate q _N ²⁾ [l/min]	
In main flow direction 1 → 2	25,000 ... 32,000
In exhaust direction 2 → 3	8,900

2) Measured at p₁ = 6 bar and Δp = 1 bar

Operating and Environmental Conditions		
Operating medium	Compressed air	
Coil characteristics	V24	24 V DC
	V110	110 V AC
	V230	230 V AC
Ambient temperature [°C]	-10 ... +50	
Temperature of medium [°C]	-10 ... +50	
Assembly position	Any	
Corrosion resistance CRC ³⁾	2	

3) Corrosion resistance class 2 according to Festo standard 940 070
Components requiring moderate corrosion resistance. Externally visible parts with primarily decorative surface requirements which are in direct contact with a normal industrial environment or media such as coolants or lubricating agents.

Weights [g]	
Standard	3,800
With silencer	3,900

- For spare parts go to: www.festo.com/en/spare_parts_service

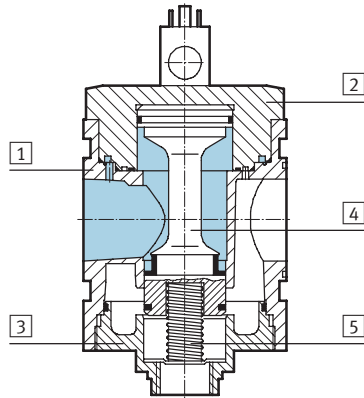
On-off Valves MS12-EE – Metric Series

Technical Data, Dimensional Drawings

FESTO

Materials

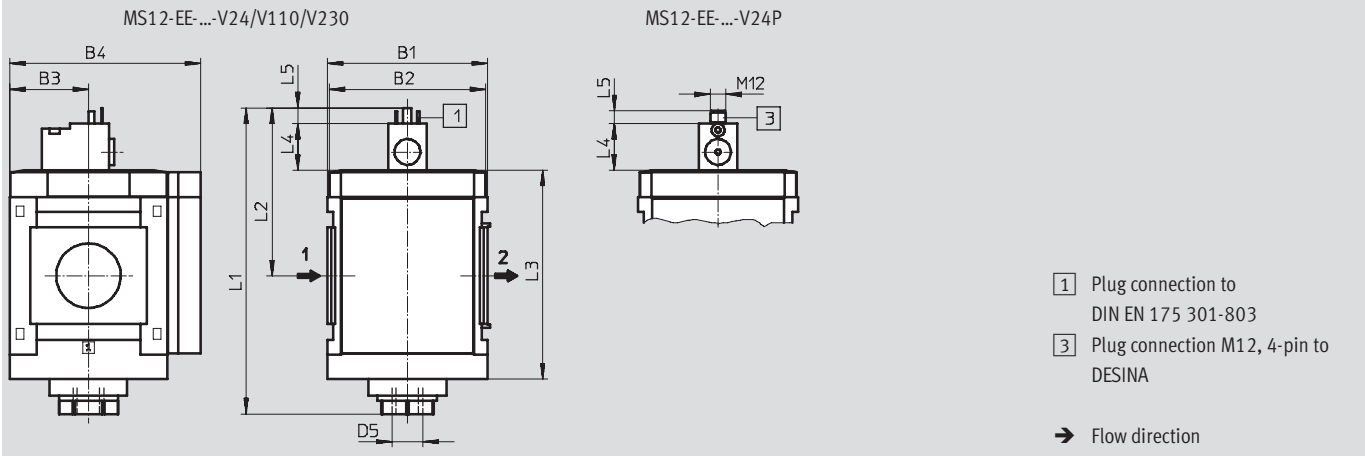
Sectional view



On-off valve		
1	Body	Die-cast aluminum
2	Cap, top	Aluminum
3	Cap, bottom	Aluminum
4	Valve spool	Stainless steel, polyacetate, nitrile rubber
5	Springs	Steel
-	Covers/cover plates	Polyamide
-	Seals	Nitrile rubber
Note on materials		Free of copper and PTFE (not with variant AG)

Dimensions¹⁾ – Standard

Download CAD Data → www.festo.com/us/cad



Type	B1	B2	B3	B4	L1	L2	L3	L4	L5	D5
MS12-EE-...-V24/V110/V230	124	122	61	148	237	130	162	35.7	12.3	G1
MS12-EE-...-V24P								36	10	

1) Dimensions are in millimeters, unless otherwise noted.

Note: This product conforms with the ISO 1179-1 standard and the ISO 228-1 standard.

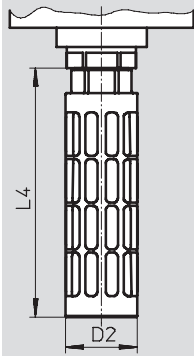
On-off Valves MS12-EE – Metric Series

Dimensional Drawings, Ordering Data – Pre-configured Products

FESTO

Dimensions¹⁾ – Silencer

Download CAD Data → www.festo.com/us/cad



Type	D2 Ø	L4
MS12-EE-...-S	47.8	165.5

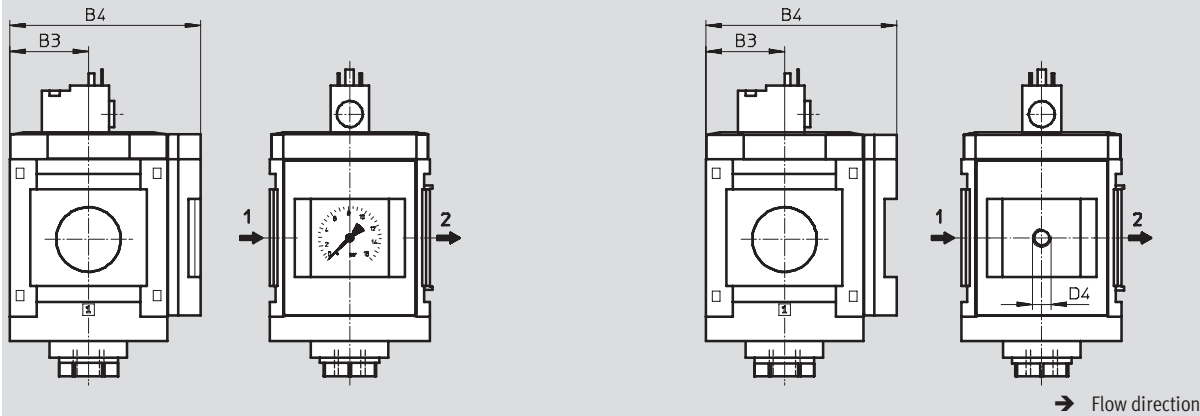
1) Dimensions are in millimeters, unless otherwise noted.

Dimensions¹⁾ – Pressure Gauges/Adapters

Download CAD Data → www.festo.com/us/cad

Integrated MS pressure gauge AG, display unit [bar]

Adapter A4 for EN pressure gauge 1/4, without pressure gauge



Type	B3	B4	D4
MS12-EE-...-AG	61	148	–
MS12-EE-...-A4	61	148	G1/4

1) Dimensions are in millimeters, unless otherwise noted.

Ordering Data			
Connection	Supply voltage 24 V DC		
	Part No.	Type	LT
G1 ... G2 ²⁾	541496	MS12-EE-G-V24 ³⁾	Q

LT = Lead time 1D typically ships same day/next day 1W typically ships within 1 week Q request a quote for lead time

2) Port plate must be ordered separately as an accessory → 1210

3) Free of copper and PTFE

Note: This product conforms with the ISO 1179-1 standard and the ISO 228-1 standard.

On-off Valves MS12-EE – Metric Series

Ordering Data – Configurable Products

FESTO

M Mandatory Data						O Options				
Part No.	Series	Size	Function	Connection size	Supply voltage	Silencer	Pressure gauge/adapter	Alternative pressure gauge scale	Type of mounting	Reverse flow direction
535032	MS	12	EE	AGF AGG AGH AGI G	V24 V24P V110 V230	S	AG A4	PSI MPa	WP	Z
Order example										
535032	MS	12	- EE	- AGI	- V110	- S	- AG	- MPA	- WP	-

Ordering Table						
Grid dimension		[mm]	124	Conditions	Code	Enter code
M	Part No.	535032				
	Series	Standard			MS	
	Size	12			12	
	Function	On-off valve, electrical			-EE	
	Connection size	Port plate G1 (dimensions → 1210)			-AGF	
		Port plate G1¼ (dimensions → 1210)			-AGG	
		Port plate G1½ (dimensions → 1210)			-AGH	
		Port plate G2 (dimensions → 1210)			-AGI	
		Module without connecting thread, without port plate			G	
	Supply voltage	24 V DC (connection pattern to EN 175301), 18 bar			-V24	
		24 V DC plug (connection pattern M12 to DESINA), 18 bar			-V24P	
		110 V AC (connection pattern to EN 175301), 18 bar			-V110	
		230 V AC (connection pattern to EN 175301), 18 bar			-V230	
O	Silencer	Silencer			-S	
	Pressure gauge/adapter	MS pressure gauge, bar			-AG	
		Adapter plate for EN pressure gauge 1¼, without pressure gauge			-A4	
	Alternative pressure gauge scale	psi		1	-PSI	
		MPa		1	-MPA	
	Type of mounting	Mounting bracket (dimensions → 1211)		2	-WP	
	Reverse flow direction	Flow direction from right to left			-Z	

1 PSI, MPA Only with pressure gauge AG

2 WP Only with port plate AGF, AGG, AGH or AGI

Transfer order code

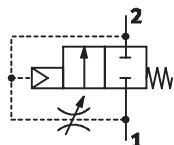
535032	MS	12	- EE	-	-	-	-	-	-	-
--------	----	----	------	---	---	---	---	---	---	---

Soft-start Valves MS12-DL – Metric Series

Technical Data

FESTO

ISO Symbol



- Pneumatically actuated soft-start valve for slowly pressurizing and venting pneumatic installations (for use with on-off valves EM and EE)
- The duration of the pressure build-up is adjusted using the restrictor attached to the valve cap.
- The output pressure p2 rises slowly in accordance with the restrictor setting. The main seat opens when the switch-through pressure is reached.
- When the valve is exhausted, the main seat remains open until the switch-through pressure is reached. The rest of the exhaust procedure is performed using the restrictor.
- Pressure switching approx. 50% of supply pressure



- The cylinders advance slowly and reliably into the initial position, sudden and erratic movements are avoided.
- Adjustable switching time delay

General Technical Data				
Pneumatic connection 1, 2 ¹⁾	G1	G1¼	G1½	G2
Operating pressure [bar]	2 ... 21			

1) Dependent on port plate selected, must be ordered separately as an accessory → 1210

Note: This product conforms with the ISO 1179-1 standard and the ISO 228-1 standard.

Standard Nominal Flow Rate q _N ²⁾ [l/min]	
In main flow direction 1 → 2	25,000 ... 42,000
In exhaust direction 2 → 1	25,000 ... 42,000

2) Measured at p1 = 6 bar and p2 = 5 bar, Δp = 1 bar

Operating and Environmental Conditions	
Operating medium	Compressed air
Exhaust function	Flow control
Direction of flow	Non-reversible
Ambient temperature [°C]	–10 ... +60
Temperature of medium [°C]	–10 ... +60
Assembly position	Any
Corrosion resistance CRC ³⁾	2

3) Corrosion resistance class 2 according to Festo standard 940 070
Components requiring moderate corrosion resistance. Externally visible parts with primarily decorative surface requirements which are in direct contact with a normal industrial environment or media such as coolants or lubricating agents.

Weights [g]	
Soft-start valve	3,600

- For spare parts go to: www.festo.com/en/spare_parts_service

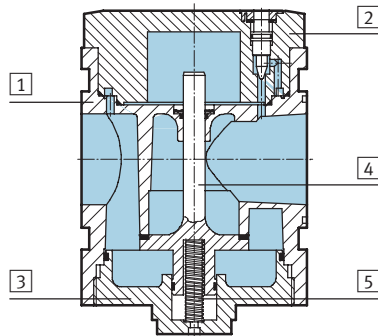
Soft-start Valves MS12-DL – Metric Series

Technical Data

FESTO

Materials

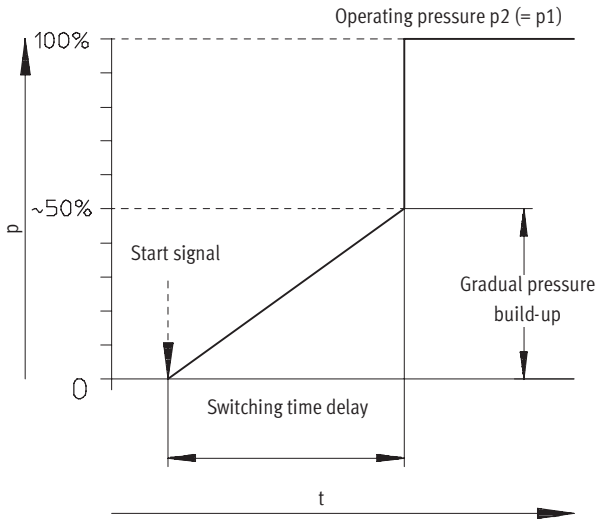
Sectional view



Soft-start valve		
1	Body	Die-cast aluminum
2	Cap, top	Aluminum
3	Cap, bottom	Aluminum
4	Valve stem	Aluminum, nitrile rubber
5	Springs	Steel
-	Covers/cover plates	Polyamide
-	Seals	Nitrile rubber
Note on materials		Free of copper and PTFE (not with variant AG)

Switching Point

Pressure p as a function of time t



Soft-start Valves MS12-DL – Metric Series

Dimensional Drawings, Ordering Data – Pre-configured Products

FESTO

Dimensions¹⁾ – Standard
Download CAD Data → www.festo.com/us/cad

→ Flow direction

B1	B2	B3	B4	L1	L2	L3
124	122	61	148	178	82	162

1) Dimensions are in millimeters, unless otherwise noted.

Dimensions¹⁾ – Pressure Gauges/Adapters
Download CAD Data → www.festo.com/us/cad

Integrated MS pressure gauge AG, display unit [bar]
Adapter A4 for EN pressure gauge 1/4, without pressure gauge

→ Flow direction

Type	B3	B4	D4
MS12-DL-...-AG	61	148	–
MS12-DL-...-A4	61	148	G1/4

1) Dimensions are in millimeters, unless otherwise noted.

Ordering Data			
Connection	Part No.	Type	LT
G1 ... G2 ²⁾	541497	MS12-DL-G ³⁾	Q

LT = Lead time **1D** typically ships same day/next day **1W** typically ships within 1 week **Q** request a quote for lead time

- 2) Port plate must be ordered separately as an accessory → 1210
- 3) Free of copper and PTFE

Note: This product conforms with the ISO 1179-1 standard and the ISO 228-1 standard.

Soft-start Valves MS12-DL – Metric Series

Ordering Data – Configurable Products



M Mandatory Data					O Options			
Part No.	Series	Size	Function	Connection size	Pressure gauge/adaptor	Alternative pressure gauge scale	Type of mounting	Reverse flow direction
535033	MS	12	DL	AGF AGG AGH AGI G	AG A4	PSI MPA	WP	Z
Order example								
535033	MS	12	- DL	- AGI	- AG	- MPA	- WP	- Z

Ordering Table								
Grid dimension		[mm]	124	Conditions		Code	Enter code	
M	Part No.	535033						
	Series	Standard				MS		MS
	Size	12				12		12
	Function	Soft-start valve, pneumatic				-DL		-DL
	Connection size	Port plate G1 (dimensions → 1210)				-AGF		
		Port plate G1¼ (dimensions → 1210)				-AGG		
		Port plate G1½ (dimensions → 1210)				-AGH		
		Port plate G2 (dimensions → 1210)				-AGI		
		Module without connecting thread, without port plate				-G		
O	Pressure gauge/adaptor	MS pressure gauge, bar				-AG		
		Adapter plate for EN pressure gauge 1/4, without pressure gauge				-A4		
	Alternative pressure gauge scale	psi			1	-PSI		
		MPa			1	-MPA		
	Type of mounting	Mounting bracket (dimensions → 1211)			2	-WP		
	Reverse flow direction	Flow direction from right to left				-Z		

1 PSI, MPA Only with pressure gauge AG

2 WP Only with port plate AGF, AGG, AGH or AGI

Transfer order code

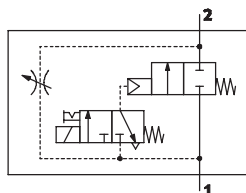
535033	MS	12	- DL	-		-		-		-		-	
--------	----	----	------	---	--	---	--	---	--	---	--	---	--

Soft-start Valves MS12-DE – Metric Series

Technical Data

FESTO

ISO Symbol



- Solenoid actuated soft-start valve for slowly pressurizing and venting pneumatic installations
- The duration of the pressure build-up is adjusted using the restrictor attached to the valve cap.
- The output pressure p2 rises slowly in accordance with the restrictor setting. Only the air flow from the restrictor is available when the solenoid valve is not actuated. The main seat is only opened by energizing the solenoid valve.
- When the solenoid valve is switched off, the main seat is closed and only the air flow from the flow control valve is available.
- The solenoid valve should remain switched on in order to vent a system as this increases the flow rate from 2 and 1 and reduces the exhaust time.



- The cylinders advance slowly and reliably into the initial position, sudden and erratic movements are avoided.
- Switch-through pressure can be exactly controlled using a solenoid valve
- Adjustable switching time delay
- Non-detenting manual override (except variant V24P)
- Solenoid coil without plug socket, three voltage ranges available

General Technical Data				
Pneumatic connection 1, 2 ¹⁾	G1	G1¼	G1½	G2
Operating pressure [bar]	3 ... 16			

1) Dependent on port plate selected, must be ordered separately as an accessory → 1210

Note: This product conforms with the ISO 1179-1 standard and the ISO 228-1 standard.

Standard Nominal Flow Rate qnN ²⁾ [l/min]	
In main flow direction 1 → 2	25,000 ... 42,000
In relief direction 2 → 1 ³⁾	25,000 ... 42,000

2) Measured at p1 = 6 bar and p2 = 5 bar, Δp = 1 bar

3) For energised solenoid valve

Operating and Environmental Conditions	
Operating medium	Compressed air
Coil characteristics	V24 24 V DC
	V110 110 V AC
	V230 230 V AC
Exhaust function	Flow control
Direction of flow	Non-reversible
Ambient temperature [°C]	–10 ... +50
Temperature of medium [°C]	–10 ... +50
Assembly position	Any
Corrosion resistance CRC ⁴⁾	2

4) Corrosion resistance class 2 according to Festo standard 940 070

Components requiring moderate corrosion resistance. Externally visible parts with primarily decorative surface requirements which are in direct contact with a normal industrial environment or media such as coolants or lubricating agents.

Soft-start Valves MS12-DE – Metric Series

Technical Data

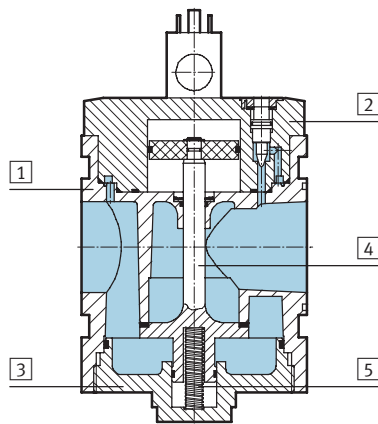


Weights [g]	
Soft-start valve	3,800

- For spare parts go to: www.festo.com/en/spare_parts_service

Materials

Sectional view



Soft-start valve		
1	Body	Die-cast aluminum
2	Cap, top	Aluminum
3	Cap, bottom	Aluminum
4	Valve stem	Aluminum, nitrile rubber
5	Springs	Steel
–	Covers/cover plates	Polyamide
–	Seals	Nitrile rubber
	Note on materials	Free of copper and PTFE (not with variant AG)

Soft-start Valves MS12-DE – Metric Series

Dimensional Drawings, Ordering Data – Pre-configured Products

FESTO

Dimensions¹⁾ – Standard

MS12-DE-...-V24/V110/V230

MS12-DE-...-V24P

Download CAD Data → www.festo.com/us/cad

1 Plug connection to DIN EN 175 301-803

3 Plug connection M12, 4-pin to Desina

→ Flow direction

Type	B1	B2	B3	B4	L1	L2	L3	L4	L5
MS12-DE-...-V24/V110/V230	124	122	61	148	226	130	162	35.7	12.3
MS12-DE-...-V24P								36	10

1) Dimensions are in millimeters, unless otherwise noted.

Dimensions¹⁾ – Pressure Gauges/Adapters

Integrated MS pressure gauge AG, display unit [bar]

Adapter A4 for EN pressure gauge 1/4, without pressure gauge

Download CAD Data → www.festo.com/us/cad

→ Flow direction

Type	B3	B4	D4
MS12-DE-...-AG	61	148	–
MS12-DE-...-A4	61	148	G1/4

1) Dimensions are in millimeters, unless otherwise noted.

Ordering Data			
Connection	Supply voltage 24 V DC		
	Part No.	Type	LT
G1 ... G2 ²⁾	541498	MS12-DE-G-V24 ³⁾	Q

LT = Lead time 1D typically ships same day/next day 1W typically ships within 1 week Q request a quote for lead time

2) Port plate must be ordered separately as an accessory → 1210

3) Free of copper and PTFE

Note: This product conforms with the ISO 1179-1 standard and the ISO 228-1 standard.

Soft-start Valves MS12-DE – Metric Series

Ordering Data – Configurable Products

FESTO

M Mandatory Data						O Options			
Part No.	Series	Size	Function	Connection size	Supply voltage	Pressure gauge/adaptor	Alternative pressure gauge scale	Type of mounting	Reverse flow direction
535034	MS	12	DE	AGF AGG AGH AGI G	V24 V24P V110 V230	AG A4	PSI MPa	WP	Z
Order example									
535034	MS	12	- DE	- AGH	- V230	- A4	-	- WP	- Z

Ordering Table									
Grid dimension		[mm]	124	Conditions		Code		Enter code	
M	Part No.	535034							
	Series	Standard				MS		MS	
	Size	12				12		12	
	Function	Soft-start valve, electrical				-DE		-DE	
	Connection size	Port plate G1 (dimensions → 1210)				-AGF			
		Port plate G1¼ (dimensions → 1210)				-AGG			
		Port plate G1½ (dimensions → 1210)				-AGH			
		Port plate G2 (dimensions → 1210)				-AGI			
		Module without connecting thread, without port plate				-G			
	Supply voltage	24 V DC (connection pattern to EN 175301), 18 bar				-V24			
		24 V DC plug (connection pattern M12 to DESINA), 16 bar				-V24P			
		110 V AC (connection pattern to EN 175301), 18 bar				-V110			
		230 V AC (connection pattern to EN 175301), 18 bar				-V230			
O	Pressure gauge/adaptor	MS pressure gauge, bar				-AG			
		Adapter plate for EN pressure gauge ¼, without pressure gauge				-A4			
	Alternative pressure gauge scale	psi			1	-PSI			
		MPa			1	-MPa			
	Type of mounting	Mounting bracket (dimensions → 1211)			2	-WP			
	Reverse flow direction	Flow direction from right to left				-Z			

1 PSI, MPa Only with pressure gauge AG

2 WP Only with port plate AGF, AGG, AGH or AGI

Transfer order code

535034 MS 12 - DE - - - - -

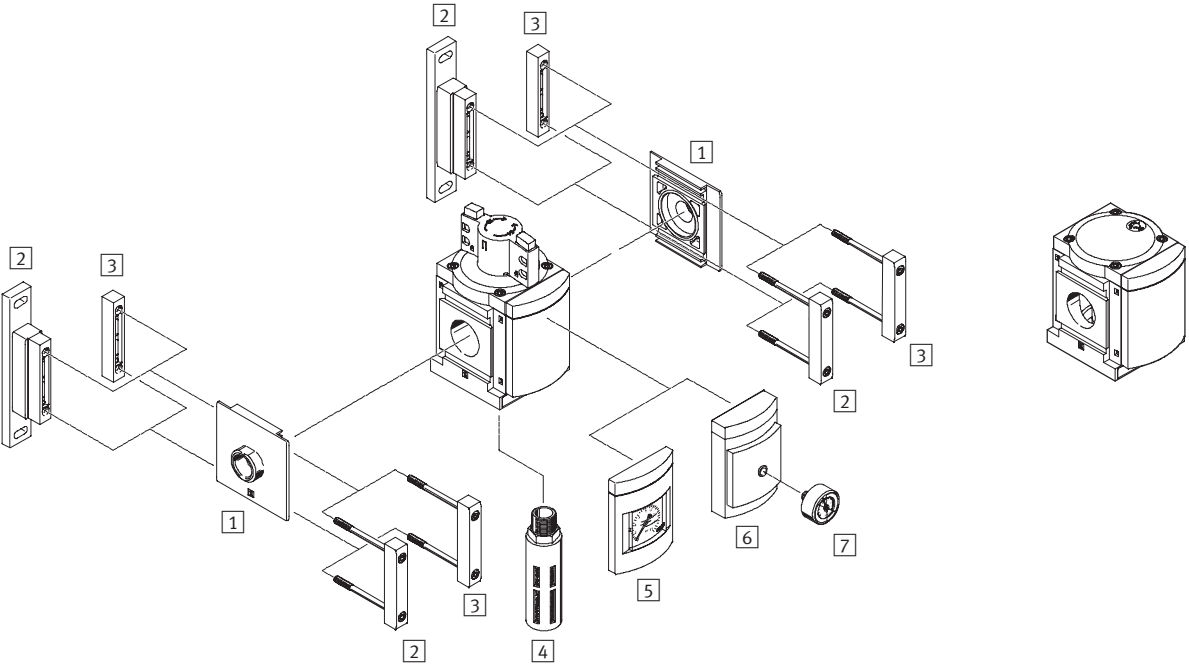
On-off/Soft-start Valves MS12-EM/DL – Metric Series

Accessories Overview

Mounting Attachments and Accessories

On-off Valve EM – manually actuated

Soft-start Valve DL – pneumatically actuated



Mounting Attachments and Accessories		➔ Page
1	Port plate MS12-AG...	1210
2	Mounting bracket MS12-WP	1211
3	Body connector MS12-MV	1210
4	Silencer (with EM) U	1212
5	MS pressure gauge AG	EM 1195 DL 1203
6	Adapter for EN pressure gauge 1/4 A4	EM 1195 DL 1203
7	Pressure gauge MA	1212

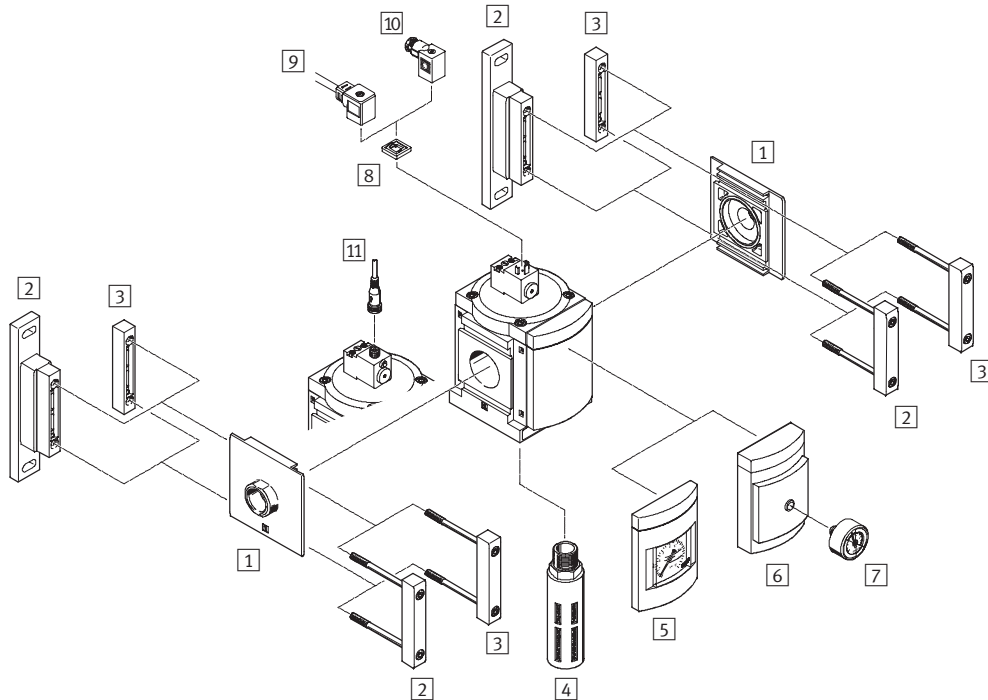
On-off/Soft-start Valves MS12-EE/DE – Metric Series

Accessories Overview

FESTO

Mounting Attachments and Accessories

On-off/Soft-start Valve EE/DE – solenoid actuated



Mounting Attachments and Accessories

→ Page

1	Port plate MS12-AG...	1210
2	Mounting bracket MS12-WP	1211
3	Body connector MS12-MV	1210
4	Silencer (with EE) U	1212
5	MS pressure gauge AG	EE 1199 DE 1207
6	Adapter for EN pressure gauge 1/4 A4	EE 1199 DE 1207
7	Pressure gauge MA	1212
8	Illuminating seal MC-LD	1212
9	Plug socket with cable KMC	1212
10	Plug socket MSSD-C	1212
11	Plug socket with cable SIM-M12-4...	1212

On-off/Soft-start Valves MS12-EM/EE/DL/DE – Metric Series

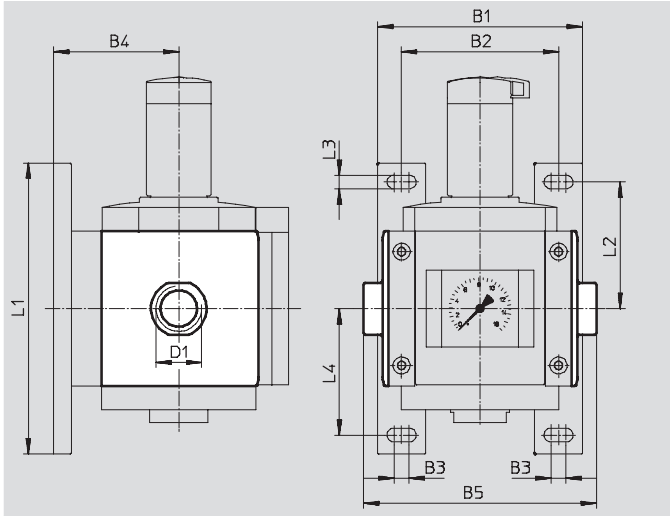


Accessories

1 Port plate MS12-AG...

- Adapter for pneumatic connection

Material:
Die-cast aluminum
Free of copper and PTFE



Dimensions and Ordering Data												
B1	B2	B3	B4	B5	D1	L1	L2	L3	L4	Weight [g]	Part No.	Type
162	124	12	99	184	G1	230	100	11	100	1,300	537135	MS12-AGF
				184	G1¼						537136	MS12-AGG
				184	G1½						537137	MS12-AGH
				196	G2						537138	MS12-AGI

3 Body connector MS12-MV

- For connecting modules

Material:
Die-cast aluminum,
Free of copper and PTFE



Ordering Data			
Size	Weight [g]	Part No.	Type
MS12	500	537134	MS12-MV

On-off/Soft-start Valves MS12-EM/EE/DL/DE – Metric Series

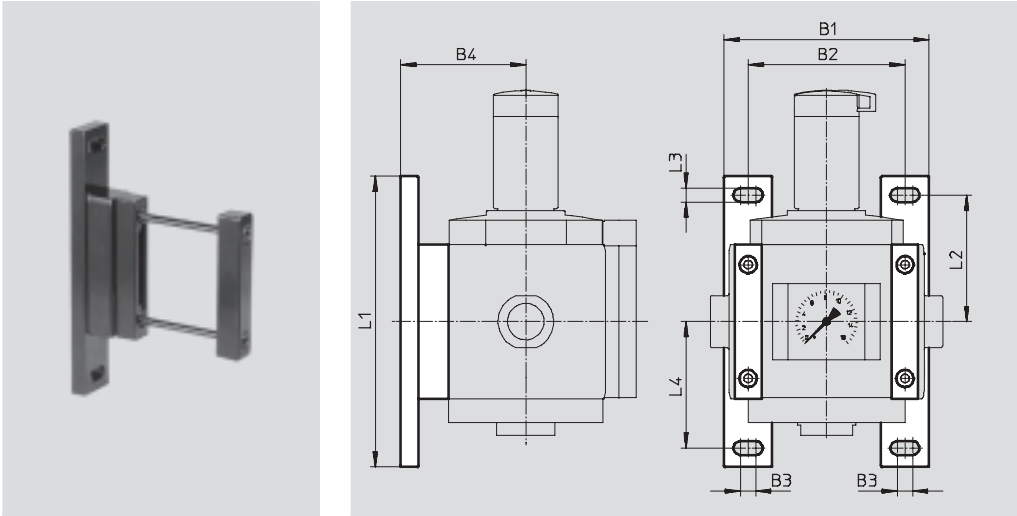


Accessories

2 Mounting bracket MS12-WP

- To connect the modules for wall mounting
- In combination with a port plate for mounting an individual unit on a wall

Material:
Die-cast aluminum
Free of copper and PTFE

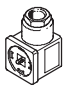


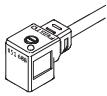
Dimensions and Ordering Data											
Size	B1	B2	B3	B4	L1	L2	L3	L4	Weight [g]	Part No.	Type
MS12	162	124	12	99	230	100	11	100	700	537133	MS12-WP


On-off/Soft-start Valves MS12-EM/EE/DL/DE – Metric Series


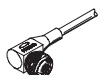
Accessories


FESTO


10 Ordering Data – Plug Socket MSSD					Technical data → www.festo.com/catalog/mssd	
	Description	Operating voltage range	Electrical connection	Type of mounting cable connection	Part No.	Type
	for MS12-EE/DE	≤ 250 V AC/DC	3-pin	Clamping screws	34583	MSSD-C
			4-pin	Insulation displacement technology	192748	MSSD-C-S-M16

9 Ordering Data – Plug Socket with Cable KMC					Technical data → www.festo.com/catalog/kmc	
	Description	Operating voltage range	Switching status display	Cable length [m]	Part No.	Type
	for MS12-EE/DE	24 V DC	LED	2.5	30931	KMC-1-24DC-2,5-LED
		24 V DC	LED	5	30933	KMC-1-24DC-5-LED
		24 V DC	LED	10	193459	KMC-1-24-10-LED
		230 V AC	–	2.5	30932	KMC-1-230AC-2,5
		230 V AC	–	5	30934	KMC-1-230AC-5

8 Ordering Data – Illuminating Seal MC-LD			Technical data → www.festo.com/catalog/mc-ld	
	Description	Operating voltage range	Part No.	Type
	for plug socket with cable KMC and plug socket MSSD-C	12 ... 24 V DC	19145	MC-LD-12-24DC
		230 V DC/AC ±10%	19146	MC-LD-230AC

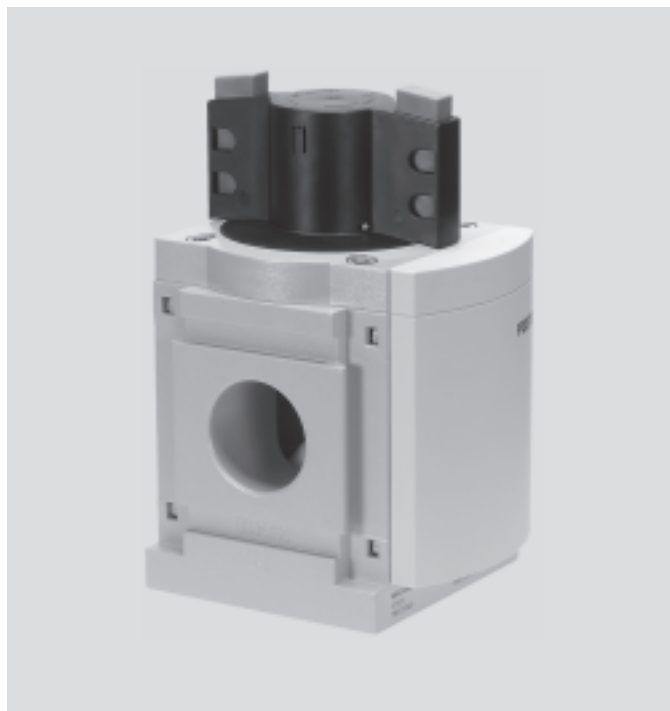
11 Ordering Data – Plug Socket with Cable SIM-M12			Technical data → www.festo.com/catalog/sim-m12	
	Electrical connection	Cable length [m]	Part No.	Type
	M12x1, 4-pin	5	164259	SIM-M12-4GD-5-PU
	M12x1, 4-pin	5	164258	SIM-M12-4WD-5-PU

7 Ordering Data – Pressure Gauge MA					Technical data ➔ www.festo.com/catalog/ma	
	Nominal size	Pneumatic connection	Indicating range		Part No.	Type
			[bar]	[psi]		
	Pressure gauge MA, DIN EN 837-1					
	40	G¼	0 ... 16	0 ... 232	183901	MA-40-16-G¼-EN
	Pressure gauge MA, DIN EN 837-1, with red-green range					
	50	R¼	0 ... 16	–	525729	MA-50-16-R¼-E-RG

4 Ordering Data – Silencer U			Technical data → www.festo.com/catalog/u	
	Description	Pneumatic connection	Part No.	Type
	for MS12-EM/EE	G1	151990	U-1-B

On-off/Soft-start Valves MS12N-EM/EE/DL/DE – Inch Series

FESTO



Manually operated and solenoid actuated on-off valves for pressurizing and venting pneumatic installations. Pneumatic and solenoid actuated soft-start valves for slowly pressurizing and venting pneumatic installations.

- On-off valves
 - MS12N-EM, manually operated
 - MS12N-EE, solenoid actuated
- Soft-start valves
 - MS12N-DL, pneumatically actuated
 - MS12N-DE, solenoid actuated
- Pneumatic connection: 1 NPT, 1¼ NPT, 1½ NPT, 2 NPT
- Operating pressure
 - EM: 0 ... 309 psi
 - EE and DE: 44 ... 235 psi
 - DL: 29 ... 309 psi
- Flow rate: 882.5 ... 1,482.6 scfm

Product Range Overview														
Type	Flow rate [scfm]	Pneumatic connections		Supply voltage				Pressure indicator				Options		
		Body thread	Port plate	24 V DC (connection pattern to EN 175301)	24 V DC (connection pattern M12 to DESINA)	110 V AC (connection pattern to EN 175301)	230 V AC (connection pattern to EN 175301)	Cover plate (without pressure gauge)	Integrated MS pressure gauge	Adapter for pressure gauge 1/8 NPT	Adapter for pressure gauge 1/4 NPT	Pressure sensor with display	Silencer	Flow direction from right to left
MS12N			AG...	V24	V24P	V110	V230	VS	AG	A8	A4	AD...	S	Z
EM	882.5 ... 1,129.6	–	1 NPT, 1¼ NPT, 1½ NPT, 2 NPT	–	–	–	–	■	■	–	■	–	■	■
EE	882.5 ... 1,129.6	–	1 NPT, 1¼ NPT, 1½ NPT, 2 NPT	■	■	■	■	■	■	–	■	–	■	■
DL	882.5 ... 1,482.6	–	1 NPT, 1¼ NPT, 1½ NPT, 2 NPT	–	–	–	–	■	■	–	■	–	–	■
DE	882.5 ... 1,482.6	–	1 NPT, 1¼ NPT, 1½ NPT, 2 NPT	■	■	■	■	■	■	–	■	–	–	■

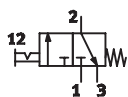
Contents			
MS12N-EM		MS12N-EE	
Technical Data	➔ 1214	Technical Data	➔ 1218
Dimensional Drawings	➔ 1215	Dimensional Drawings	➔ 1219
Ordering Data	➔ 1216	Ordering Data	➔ 1220
Accessories	➔ 1230	Accessories	➔ 1230
➔ www.festo.com/catalog/ms12n-em		➔ www.festo.com/catalog/ms12n-ee	
MS12N-DL		MS12N-DE	
Technical Data	➔ 1222	Technical Data	➔ 1226
Dimensional Drawings	➔ 1224	Dimensional Drawings	➔ 1228
Ordering Data	➔ 1224	Ordering Data	➔ 1228
Accessories	➔ 1230	Accessories	➔ 1230
➔ www.festo.com/catalog/ms12n-dl		➔ www.festo.com/catalog/ms12n-de	

On-off Valves MS12N-EM – Inch Series

Technical Data

FESTO

ISO Symbol



- Manually operated on-off valve for pressurizing and venting pneumatic installations
- Ducted exhaust possible via a threaded connection with silencer
- The switching position is immediately recognizable
- Actuator secured by locking the rotary knob
- Commercially available padlock can be used for security



General Technical Data				
Pneumatic connection 1, 2 ¹⁾	1 NPT	1¼ NPT	1½ NPT	2 NPT
Pneumatic connection 3	1 NPT			
Operating pressure [psi]	0 ... 309			

1) Dependent on port plate selected, must be ordered separately as an accessory → 1232

Standard Nominal Flow Rate q _N ²⁾ [scfm]	
In main flow direction 1 → 2	882.5 ... 1,129.6
In relief direction 2 → 3	458.9

2) Measured at p₁ = 88 psi and Δp = 15 psi

Operating and Environmental Conditions	
Operating medium	Compressed air
Exhaust function	Without flow control
Switching position display	Knob actuator direction = flow direction
Ambient temperature [°F]	14 ... 140
Temperature of medium [°F]	14 ... 140
Assembly position	Any
Corrosion resistance CRC ³⁾	2

3) Corrosion resistance class 2 according to Festo standard 940 070
Components requiring moderate corrosion resistance. Externally visible parts with primarily decorative surface requirements which are in direct contact with a normal industrial environment or media such as coolants or lubricating agents.

Weights [lb]	
Standard	7.80
With silencer	8.00

- For spare parts go to: www.festo.com/en/spare_parts_service

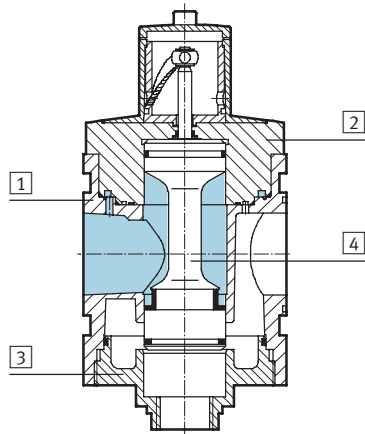
On-off Valves MS12N-EM – Inch Series

Technical Data, Dimensional Drawings



Materials

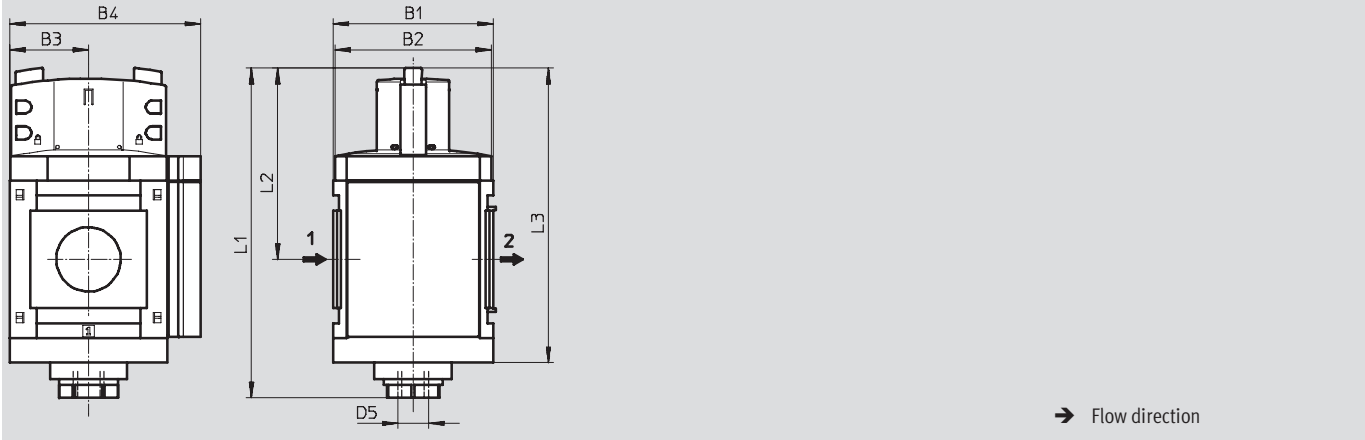
Sectional view



On-off valve		
1	Body	Die-cast aluminum
2	Cap, top	Aluminum
3	Cap, bottom	Aluminum
4	Valve spool	Stainless steel, polyacetate, nitrile rubber
-	Springs	Steel
-	Covers/cover plates	Polyamide
-	Seals	Nitrile rubber
Note on materials		Free of copper and PTFE (not with variant AG)

Dimensions – Standard

Download CAD Data → www.festo.com/us/cad



B1	B2	B3	B4	L1	L2	L3	D5
4.88	4.80	2.40	5.83	10.04	5.83	8.98	G1

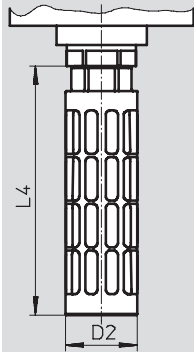
On-off Valves MS12-EM – Inch Series

Dimensional Drawings, Ordering Data – Pre-configured Products

FESTO

Dimensions¹⁾ – Silencer

Download CAD Data → www.festo.com/us/cad



Type	D2 Ø	L4
MS12-EM-...-S	1.88	6.52

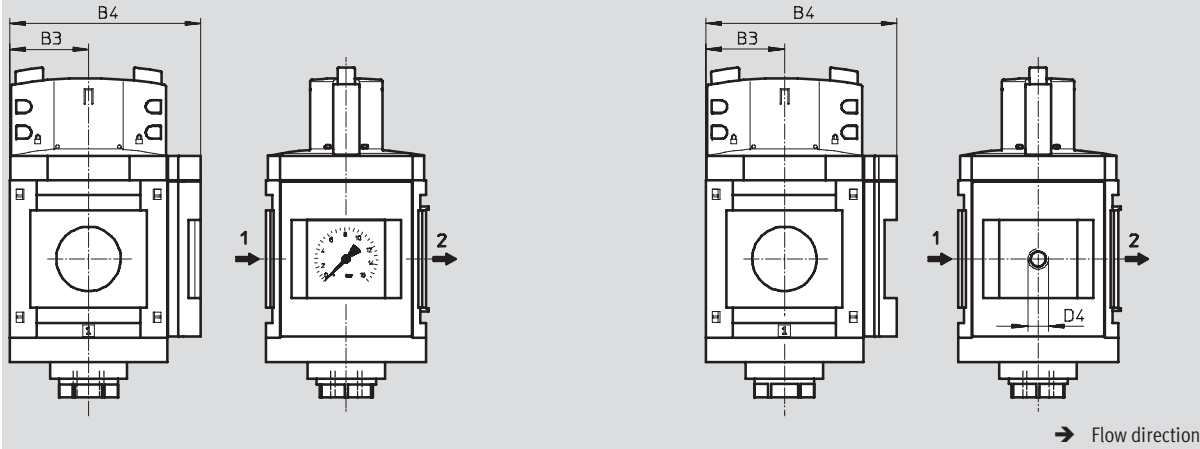
1) Dimensions are in inches, unless otherwise noted.

Dimensions¹⁾ – Pressure Gauges/Adapters

Download CAD Data → www.festo.com/us/cad

Integrated MS pressure gauge AG, display unit [psi]

Adapter A4 for EN pressure gauge 1/4, without pressure gauge



Type	B3	B4	D4
MS12-EM-...-AG	2.40	5.83	–
MS12-EM-...-A4	2.40	5.83	G1/4

1) Dimensions are in inches, unless otherwise noted.

Ordering Data

Connection	Part No.	Type	LT
1 NPT ... 2 NPT ²⁾	541495	MS12-EM-G ³⁾	Q

LT = Lead time

1D typically ships same day/next day

1W typically ships within 1 week

Q request a quote for lead time

2) Port plate must be ordered separately as an accessory → 1232

3) Free of copper and PTFE

On-off Valves MS12N-EM – Inch Series

Ordering Data – Configurable Products

FESTO

M Mandatory Data						O Options				
Part No.	Series	Size	Thread	Function	Connection size	Silencer	Pressure gauge/adaptor	Alternative pressure gauge scale	Type of mounting	Reverse flow direction
535036	MS	12	N	EM	AQT AQU AQV AQW G	S	AG A4	BAR MPa	WP	Z
Order example										
535036	MS	12	N	- EM	- G	- S	- AG	- BAR	-	- Z

Ordering Table							
Grid dimension		[mm]	124	Conditions	Code	Enter code	
M	Part No.	535036					
	Series	Standard			MS	MS	
	Size	12			12	12	
	Thread	NPT thread			N	N	
	Function	On-off valve, manual			-EM	-EM	
	Connection size	Port plate 1 NPT (dimensions → 1232)			-AQT		
		Port plate 1¼ NPT (dimensions → 1232)			-AQU		
		Port plate 1½ NPT (dimensions → 1232)			-AQV		
		Port plate 2 NPT (dimensions → 1232)			-AQW		
		Module without connecting thread, without connecting plate			-G		
	O	Silencer	Silencer			-S	
		Pressure gauge/adapter	MS pressure gauge, psi			-AG	
Adapter plate for EN pressure gauge ¼, without pressure gauge				-A4			
Alternative pressure gauge scale		bar	1	-BAR			
		MPa	1	-MPA			
Type of mounting		Mounting bracket (dimensions → 1233)	2	-WP			
Reverse flow direction		Flow direction from right to left		-Z			

1 BAR, MPA Only with pressure gauge AG

2 WP Only with port plate AQT, AQU, AQV or AQW

Transfer order code

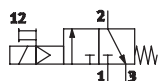
535036 MS 12 N - EM - - - - -

On-off Valves MS12N-EE – Inch Series

Technical Data

FESTO

ISO Symbol



- Solenoid actuated on-off valve for pressurizing and venting pneumatic installations
- Solenoid coil without plug socket, three voltage ranges available.
- Ducted exhaust possible via a threaded connection with silencer
- Non-detenting manual override (except variant V24P)



General Technical Data				
Pneumatic connection 1, 2 ¹⁾	1 NPT	1¼ NPT	1½ NPT	2 NPT
Pneumatic connection 3	1 NPT			
Operating pressure [psi]	44 ... 235			

1) Dependent on port plate selected, must be ordered separately as an accessory → 1232

Standard Nominal Flow Rate q _N ²⁾ [scfm]	
In main flow direction 1 → 2	882.5 ... 1,129.6
In relief direction 2 → 3	314.2

2) Measured at p₁ = 88 psi and Δp = 15 psi

Operating and Environmental Conditions		
Operating medium		Compressed air
Coil characteristics	V24	24 V DC
	V110	110 V AC
	V230	230 V AC
Ambient temperature [°F]		14 ... 122
Temperature of medium [°F]		14 ... 122
Assembly position		Any
Corrosion resistance CRC ³⁾		2

3) Corrosion resistance class 2 according to Festo standard 940 070
Components requiring moderate corrosion resistance. Externally visible parts with primarily decorative surface requirements which are in direct contact with a normal industrial environment or media such as coolants or lubricating agents.

Weights [lb]	
Standard	7.60
With silencer	7.80

- For spare parts go to: www.festo.com/en/spare_parts_service

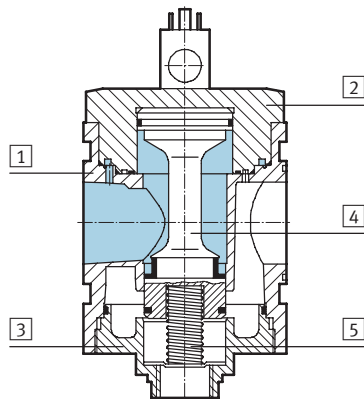
On-off Valves MS12N-EE – Inch Series

Technical Data, Dimensional Drawings

FESTO

Materials

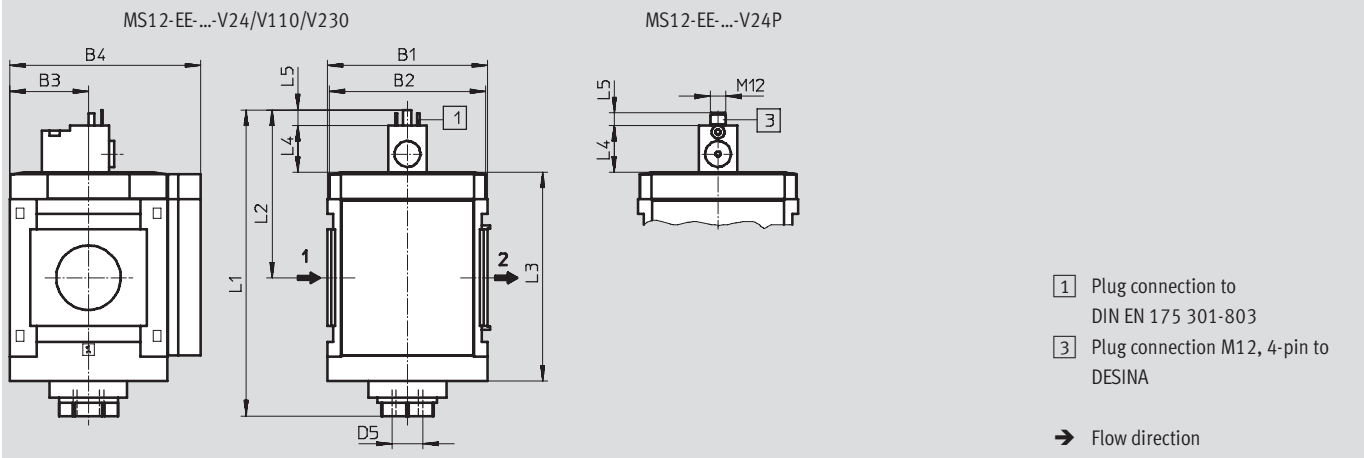
Sectional view



On-off valve		
1	Body	Die-cast aluminum
2	Cap, top	Aluminum
3	Cap, bottom	Aluminum
4	Valve spool	Stainless steel, polyacetate, nitrile rubber
5	Springs	Steel
-	Covers/cover plates	Polyamide
-	Seals	Nitrile rubber
Note on materials		Free of copper and PTFE (not with variant AG)

Dimensions¹⁾ – Standard

Download CAD Data → www.festo.com/us/cad



Type	B1	B2	B3	B4	L1	L2	L3	L4	L5	D5
MS12-EE-V24/V110/V230	4.88	4.80	2.40	5.83	9.33	5.12	6.38	1.41	0.48	G1
MS12-EE-V24P								1.42	0.39	

1) Dimensions are in inches, unless otherwise noted.

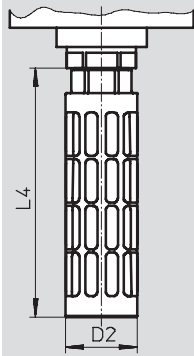
On-off Valves MS12N-EE – Inch Series

Dimensional Drawings, Ordering Data – Pre-configured Products

FESTO

Dimensions¹⁾ – Silencer

Download CAD Data → www.festo.com/us/cad



Type	D2 Ø	L4
MS12-EE-...-S	1.88	6.52

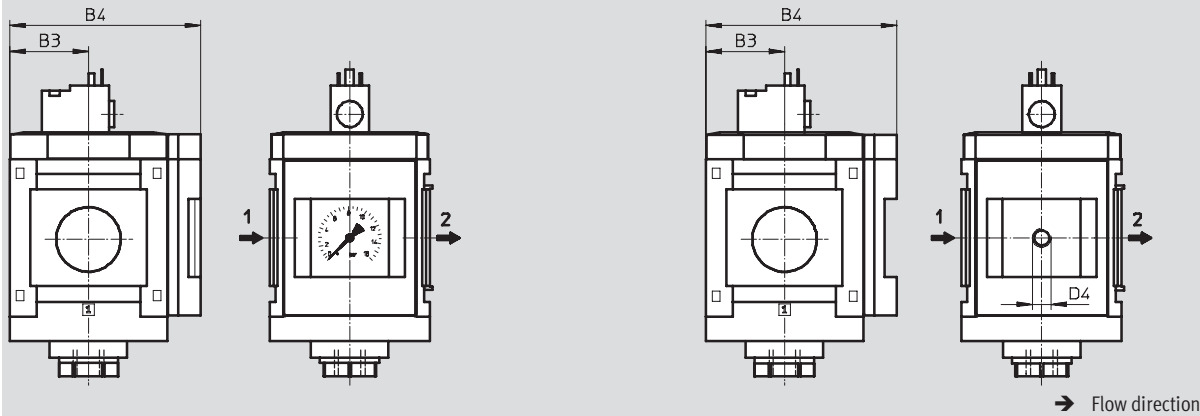
1) Dimensions are in inches, unless otherwise noted.

Dimensions¹⁾ – Pressure Gauges/Adapters

Download CAD Data → www.festo.com/us/cad

Integrated MS pressure gauge AG, display unit [psi]

Adapter A4 for EN pressure gauge 1/4, without pressure gauge



Type	B3	B4	D4
MS12-EE-...-AG	2.40	5.83	–
MS12-EE-...-A4	2.40	5.83	G1/4

1) Dimensions are in inches, unless otherwise noted.

Ordering Data			
Connection	Supply voltage 24 V DC		
	Part No.	Type	LT
1 NPT ... 2 NPT ²⁾	541496	MS12-EE-G-V24 ³⁾	Q

LT = Lead time 1D typically ships same day/next day 1W typically ships within 1 week Q request a quote for lead time

2) Port plate must be ordered separately as an accessory → 1232

3) Free of copper and PTFE

On-off Valves MS12N-EE – Inch Series

Ordering Data – Configurable Products

FESTO

M Mandatory Data							O Options				
Part No.	Series	Size	Thread	Function	Connection size	Supply voltage	Silencer	Pressure gauge/adapter	Alternative pressure gauge scale	Type of mounting	Reverse flow direction
535037	MS	12	N	EE	AQT AQU AQV AQW G	V24 V24P V110 V230	S	AG A4	BAR MPa	WP	Z
Order example											
535037	MS	12	N	- EE	- AQW	- V110	- S	- AG	- MPA	- WP	-

Ordering Table											
Grid dimension		[mm]	124						Conditions	Code	Enter code
M	Part No.	535037									
	Series	Standard								MS	MS
	Size	12								12	12
	Function	On-off valve, electrical								-EE	-EE
	Thread	NPT thread								N	N
	Connection size	Port plate 1 NPT (dimensions → 1232)								-AQT	
		Port plate 1¼ NPT (dimensions → 1232)								-AQU	
		Port plate 1½ NPT (dimensions → 1232)								-AQV	
		Port plate 2 NPT (dimensions → 1232)								-AQW	
		Module without connecting thread, without port plate								G	
	Supply voltage	24 V DC (connection pattern to EN 175301), 265 psi								-V24	
		24 V DC plug (connection pattern M12 to DESINA), 235 psi								-V24P	
		110 V AC (connection pattern to EN 175301), 265 psi								-V110	
		230 V AC (connection pattern to EN 175301), 265 psi								-V230	
O	Silencer	Silencer								-S	
	Pressure gauge/adapter	MS pressure gauge, bar								-AG	
		Adapter plate for EN pressure gauge ¼, without pressure gauge								-A4	
	Alternative pressure gauge scale	bar							1	-BAR	
		MPa							1	-MPA	
	Type of mounting	Mounting bracket (dimensions → 1233)							2	-WP	
	Reverse flow direction	Flow direction from right to left								-Z	

1 BAR, MPA Only with pressure gauge AG

2 WP Only with port plate AQT, AQU, AQV or AQW

Transfer order code

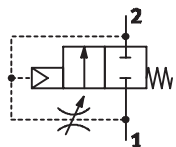
535037	MS	12	N	- EE	-		-		-		-		-	
--------	----	----	---	------	---	--	---	--	---	--	---	--	---	--

Soft-start Valves MS12N-DL – Inch Series

Technical Data

FESTO

ISO Symbol



- The duration of the pressure build-up is adjusted using the restrictor attached to the valve cap.
- The output pressure p2 rises slowly in accordance with the restrictor setting. The main seat opens when the switch-through pressure is reached.
- When the valve is exhausted, the main seat remains open until the switch-through pressure is reached. The rest of the exhaust procedure is performed using the restrictor.
- Pneumatically actuated soft-start valve for slowly pressurizing and venting pneumatic installations (for use with on-off valves EM and EE)
- Adjustable switching time delay



- The cylinders advance slowly and reliably into the initial position, sudden and erratic movements are avoided.
- Pressure switching approx. 50% of supply pressure

General Technical Data				
Pneumatic connection 1, 2 ¹⁾	1 NPT	1¼ NPT	1½ NPT	2 NPT
Operating pressure [psi]	29 ... 309			

1) Dependent on port plate selected, must be ordered separately as an accessory → 1232

Standard Nominal Flow Rate q _N ²⁾ [scfm]	
In main flow direction 1 → 2	882.5 ... 1,482.6
In relief direction 2 → 1	882.5 ... 1,482.6

2) Measured at p1 = 88 psi and p2 = 74 psi, Δp = 15 psi

Operating and Environmental Conditions	
Operating medium	Compressed air
Exhaust function	Flow control
Direction of flow	Non-reversible
Ambient temperature [°F]	14 ... 140
Temperature of medium [°F]	14 ... 140
Assembly position	Any
Corrosion resistance CRC ³⁾	2

3) Corrosion resistance class 2 according to Festo standard 940 070
Components requiring moderate corrosion resistance. Externally visible parts with primarily decorative surface requirements which are in direct contact with a normal industrial environment or media such as coolants or lubricating agents.

Weights [lb]	
Soft-start valve	7.20

- For spare parts go to: www.festo.com/en/spare_parts_service

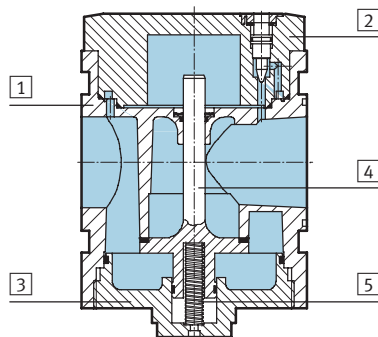
Soft-start Valves MS12N-DL – Inch Series

Technical Data

FESTO

Materials

Sectional view

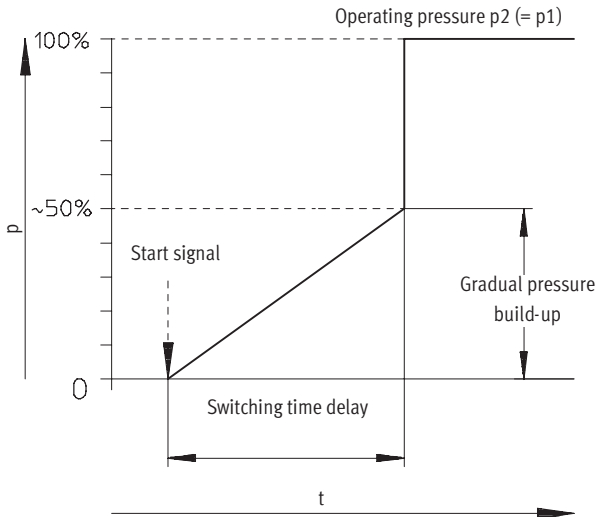


Soft-start valve

1	Body	Die-cast aluminum
2	Cap, top	Aluminum
3	Cap, bottom	Aluminum
4	Valve stem	Aluminum, nitrile rubber
5	Springs	Steel
-	Covers/cover plates	Polyamide
-	Seals	Nitrile rubber
Note on materials		Free of copper and PTFE (not with variant AG)

Switching Point

Pressure p as a function of time t



Soft-start Valves MS12N-DL – Inch Series

Dimensional Drawings, Ordering Data – Pre-configured Products

FESTO

Dimensions¹⁾ – Standard
Download CAD Data → www.festo.com/us/cad

B1	B2	B3	B4	L1	L2	L3
4.88	4.80	2.40	5.83	7.01	3.23	6.38

1) Dimensions are in inches, unless otherwise noted.

Dimensions¹⁾ – Pressure Gauges/Adapters
Download CAD Data → www.festo.com/us/cad

Integrated MS pressure gauge AG, display unit [psi]
Adapter A4 for EN pressure gauge 1/4, without pressure gauge

Type	B3	B4	D4
MS12-DL-...-AG	2.40	5.83	–
MS12-DL-...-A4	2.40	5.83	G1/4

1) Dimensions are in inches, unless otherwise noted.

Ordering Data			
Connection	Part No.	Type	LT
1 NPT ... 2 NPT ²⁾	541497	MS12-DL-G ³⁾	Q

LT = Lead time 1D typically ships same day/next day 1W typically ships within 1 week Q request a quote for lead time

- 2) Port plate must be ordered separately as an accessory → 1232
3) Free of copper and PTFE

Soft-start Valves MS12N-DL – Inch Series

Ordering Data – Configurable Products

FESTO

M Mandatory Data						O Options			
Part No.	Series	Size	Thread	Function	Connection size	Pressure gauge/adaptor	Alternative pressure gauge scale	Type of mounting	Reverse flow direction
535038	MS	12	N	DL	AQT AQU AQV AQW G	AG A4	BAR MPA	WP	Z
Order example									
535038	MS	12	N	- DL	- AQW	- AG	- MPA	- WP	- Z

Ordering Table						
Grid dimension		[mm]	124	Conditions	Code	Enter code
M	Part No.	535038				
	Series	Standard			MS	
	Size	12			12	
	Thread	NPT thread			N	
	Function	Soft-start valve, pneumatic			-DL	
	Connection size	Port plate 1 NPT (dimensions → 1232)			-AQT	
		Port plate 1¼ NPT (dimensions → 1232)			-AQU	
		Port plate 1½ NPT (dimensions → 1232)			-AQV	
		Port plate 2 NPT (dimensions → 1232)			-AQW	
		Module without connecting thread, without port plate			-G	
O	Pressure gauge/adapter	MS pressure gauge, psi			-AG	
		Adapter plate for EN pressure gauge ¼, without pressure gauge			-A4	
	Alternative pressure gauge scale	bar	1	-BAR		
		MPa	1	-MPA		
	Type of mounting	Mounting bracket (dimensions → 1233)		2	-WP	
	Reverse flow direction	Flow direction from right to left			-Z	

1 **BAR, MPA** Only with pressure gauge AG

2 **WP** Only with port plate AQT, AQU, AQV or AQW

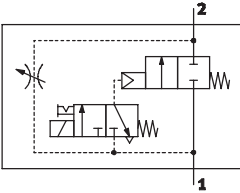
Transfer order code

535038	MS	12	N	- DL	-		-		-		-	
--------	----	----	---	------	---	--	---	--	---	--	---	--

Soft-start Valves MS12N-DE – Inch Series

Technical Data

ISO Symbol



- Solenoid actuated soft-start valve for slowly pressurizing and venting pneumatic installations
- The duration of the pressure build-up is adjusted using the restrictor attached to the valve cap.
- The output pressure p2 rises slowly in accordance with the restrictor setting. Only the air flow via the restrictor is available when the solenoid valve is not actuated. The main seat is only opened by energizing the solenoid valve.
- When the solenoid valve is switched off, the main seat is closed and only the air flow via the flow control valve is available.
- The solenoid valve should remain switched on in order to vent a system as this increases the flow rate from 2 to 1 and reduces the exhaust time.



- The cylinders advance slowly and reliably into the initial position, sudden and erratic movements are avoided.
- Switch-through pressure can be exactly controlled using a solenoid valve
- Adjustable switching time delay
- Non-detenting manual override (except variant V24P)
- Solenoid coil without plug socket, three voltage ranges available.

General Technical Data				
Pneumatic connection 1, 2 ¹⁾	1 NPT	1 1/4 NPT	1 1/2 NPT	2 NPT
Operating pressure [psi]	44 ... 235			

1) Dependent on port plate selected, must be ordered separately as an accessory → 1232

Standard Nominal Flow Rate qnN ²⁾ [scfm]	
In main flow direction 1 → 2	882.5 ... 1,482.6
In relief direction 2 → 1 ³⁾	882.5 ... 1,482.6

2) Measured at p1 = 88 psi and p2 = 74 psi Δp = 15 psi
3) For energized solenoid valve

Operating and Environmental Conditions		
Operating medium	Compressed air	
Coil characteristics	V24	24 V DC
	V110	110 V AC
	V230	230 V AC
Exhaust function	Flow control	
Direction of flow	Non-reversible	
Ambient temperature [°F]	14 ... 122	
Temperature of medium [°F]	14 ... 122	
Assembly position	Any	
Corrosion resistance CRC ⁴⁾	2	

4) Corrosion resistance class 2 according to Festo standard 940 070
Components requiring moderate corrosion resistance. Externally visible parts with primarily decorative surface requirements which are in direct contact with a normal industrial environment or media such as coolants or lubricating agents.

Soft-start Valves MS12N-DE – Inch Series

Technical Data

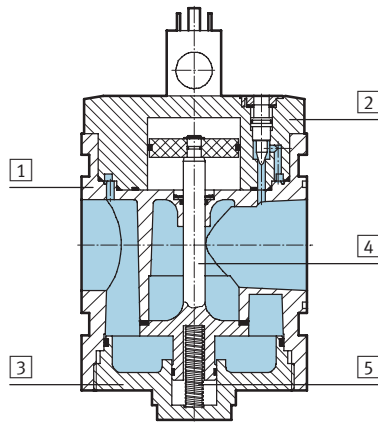


Weights [lb]	
Soft-start valve	7.60

- For spare parts go to: www.festo.com/en/spare_parts_service

Materials

Sectional view

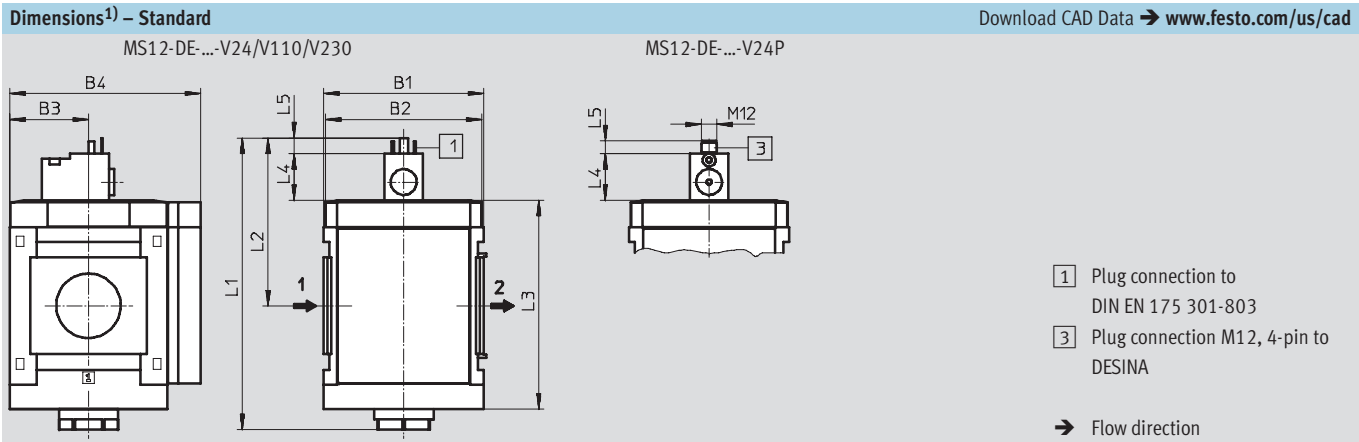


Soft-start valve		
1	Body	Die-cast aluminum
2	Cap, top	Aluminum
3	Cap, bottom	Aluminum
4	Valve stem	Aluminum, nitrile rubber
5	Springs	Steel
–	Covers/cover plates	Polyamide
–	Seals	Nitrile rubber
Note on materials		Free of copper and PTFE (not with variant AG)

Soft-start Valves MS12N-DE – Inch Series

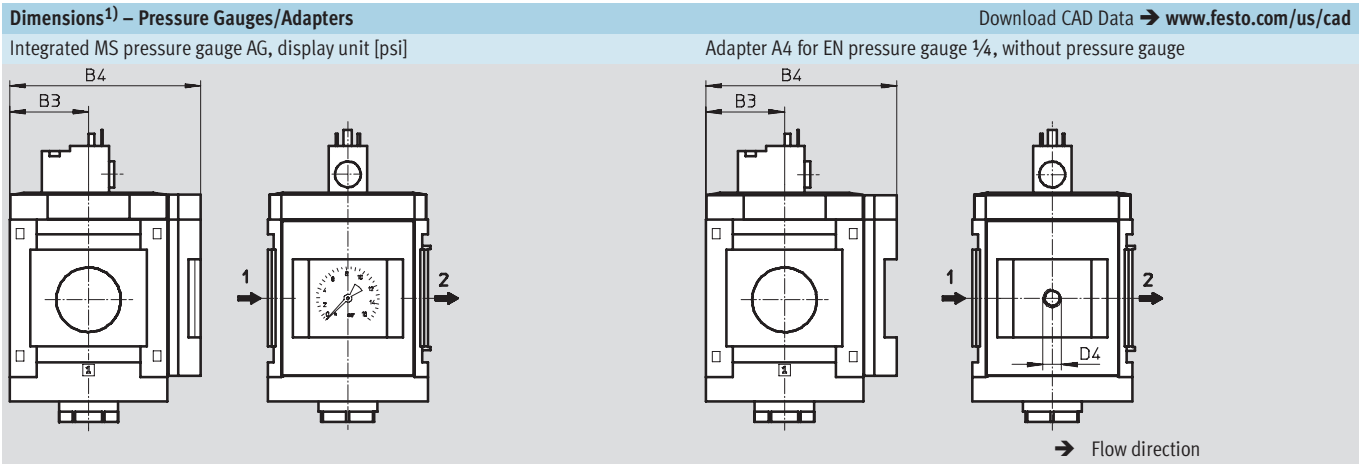
Dimensional Drawings, Ordering Data – Pre-configured Products

FESTO



Type	B1	B2	B3	B4	L1	L2	L3	L4	L5
MS12-DE-...-V24/V110/V230	4.88	4.80	2.40	5.83	8.90	5.12	6.38	1.41	0.48
MS12-DE-...-V24P								1.42	0.39

1) Dimensions are in inches, unless otherwise noted.



Type	B3	B4	D4
MS12-DE-...-AG	2.40	5.83	–
MS12-DE-...-A4	2.40	5.83	G1/4

1) Dimensions are in inches, unless otherwise noted.

Ordering Data			
Connection	Supply voltage 24 V DC		
	Part No.	Type	LT
1 NPT ... 2 NPT ²⁾	541498	MS12-DE-G-V24 ³⁾	Q

LT = Lead time 1D typically ships same day/next day 1W typically ships within 1 week Q request a quote for lead time

2) Port plate must be ordered separately as an accessory → 1232
 3) Free of copper and PTFE

Soft-start Valves MS12N-DE – Inch Series

Ordering Data – Configurable Products

FESTO

M Mandatory Data							O Options			
Part No.	Series	Size	Thread	Function	Connection size	Supply voltage	Pressure gauge/adap-ter	Alternative pressure gauge scale	Type of mountin-g	Reverse flow direction
535039	MS	12	N	DE	AQT AQU AQV AQW G	V24 V24P V110 V230	AG A4	BAR MPA	WP	Z
Order example										
535039	MS	12	N	- DE	- AQV	- V230	- A4	-	- WP	- Z

Ordering Table						
Grid dimension		[mm]	124	Conditions	Code	Enter code
M	Part No.	535039				
	Series	Standard			MS	MS
	Size	12			12	12
	Thread	NPT thread			N	N
	Function	Soft-start valve, electrical			-DE	-DE
	Connection size	Port plate 1 NPT (dimensions ➔ 1232)			-AQT	
		Port plate 1¼ NPT (dimensions ➔ 1232)			-AQU	
		Port plate 1½ NPT (dimensions ➔ 1232)			-AQV	
		Port plate 2 NPT (dimensions ➔ 1232)			-AQW	
		Module without connecting thread, without port plate			-G	
	Supply voltage	24 V DC (connection pattern to EN 175301), 265 psi			-V24	
		24 V DC plug (connection pattern M12 to DESINA), 235 psi			-V24P	
		110 V AC (connection pattern to EN 175301), 265 psi			-V110	
		230 V AC (connection pattern to EN 175301), 265 psi			-V230	
0	Pressure gauge/adapter	MS pressure gauge, psi			-AG	
		Adapter plate for EN pressure gauge ¼, without pressure gauge			-A4	
	Alternative pressure gauge scale	bar	1	-BAR		
		MPa	1	-MPA		
	Type of mounting	Mounting bracket (dimensions ➔ 1233)		2	-WP	
	Reverse flow direction	Flow direction from right to left			-Z	

1 BAR, MPA Only with pressure gauge AG

2 WP Only with port plate AQT, AQU, AQV or AQW

Transfer order code

535039	MS	12	N	- DE	-	-	-	-	-	-
--------	----	----	---	------	---	---	---	---	---	---

On-off/Soft-start Valves MS12N-EM/DL – Inch Series

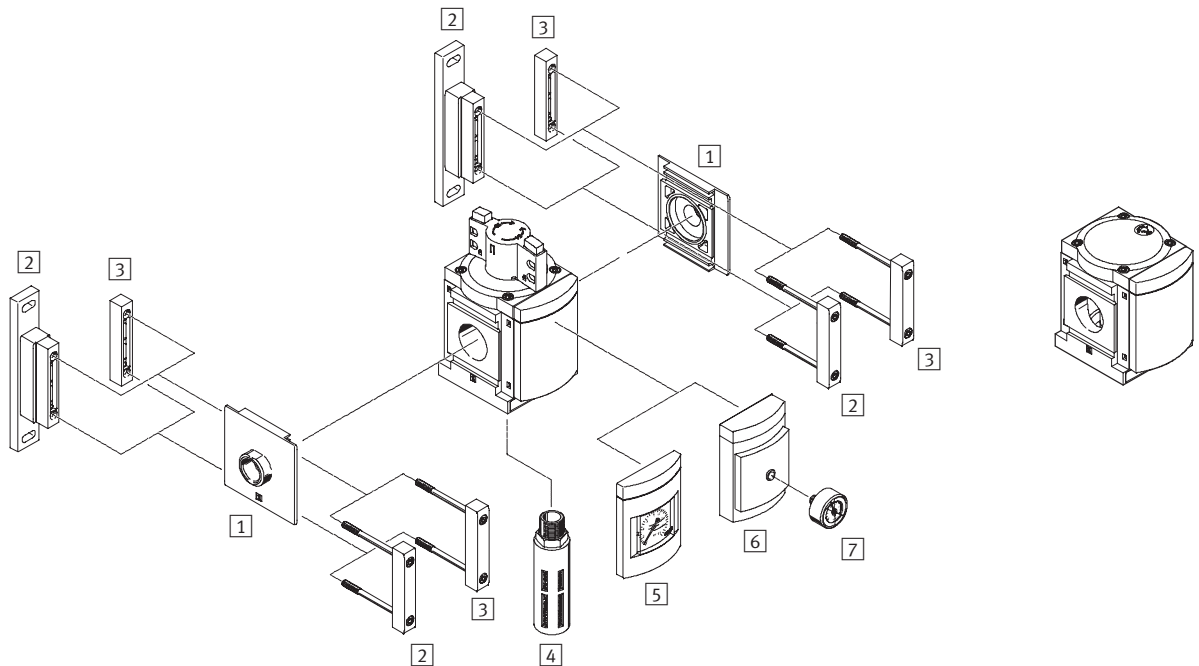
Accessories Overview

FESTO

Mounting Attachments and Accessories

On-off Valve EM – manually actuated

Soft-start Valve DL – pneumatically actuated



Mounting Attachments and Accessories

		→ Page
1	Port plate MS12-AQ...	1232
2	Mounting bracket MS12-WP	1233
3	Body connector MS12-MV	1232
4	Silencer (with EM) U	1234
5	MS pressure gauge AG	EM 1217 DL 1225
6	Adapter for EN pressure gauge 1/4 A4	EM 1217 DL 1225
7	Pressure gauge MA	1234

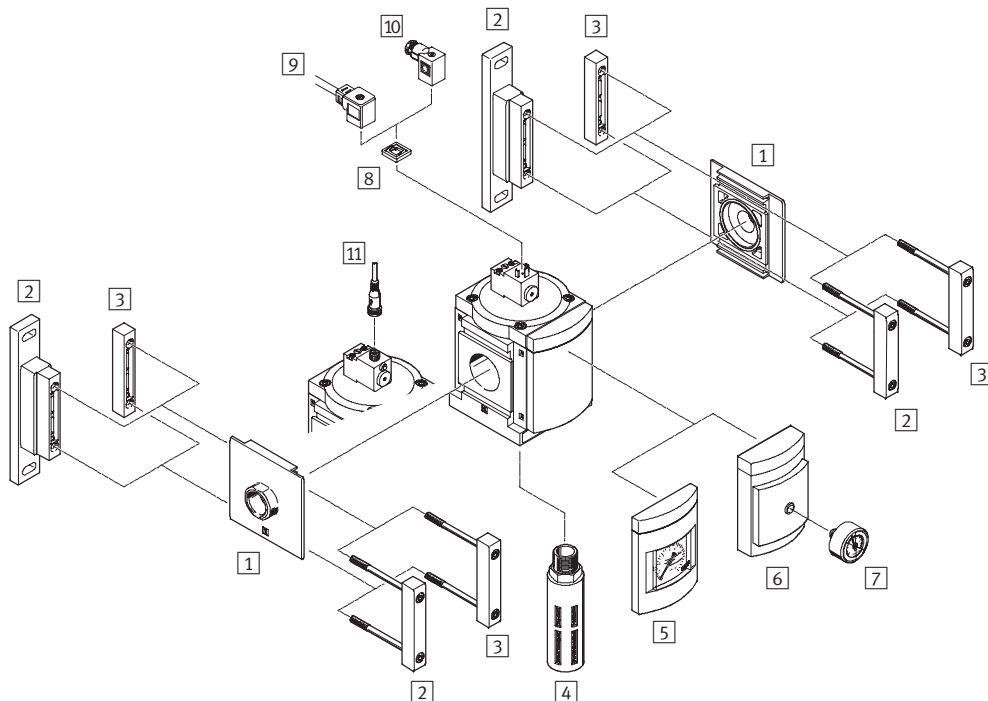
On-off/Soft-start Valves MS12N-EE/DE – Inch Series

Accessories Overview

FESTO

Mounting Attachments and Accessories

On-off/Soft-start Valve EE/DE – solenoid actuated



Mounting Attachments and Accessories

		→ Page
1	Port plate MS12-AQ...	1232
2	Mounting bracket MS12-WP	1233
3	Body connector MS12-MV	1232
4	Silencer (with EE) U	1234
5	MS pressure gauge AG	EE 1221 DE 1229
6	Adapter for EN pressure gauge 1/4 A4	EE 1221 DE 1229
7	Pressure gauge MA	1234
8	Illuminating seal MC-LD	1234
9	Plug socket with cable KMC	1234
10	Plug socket MSSD-C	1234
11	Plug socket with cable SIM-M12-4...	1234

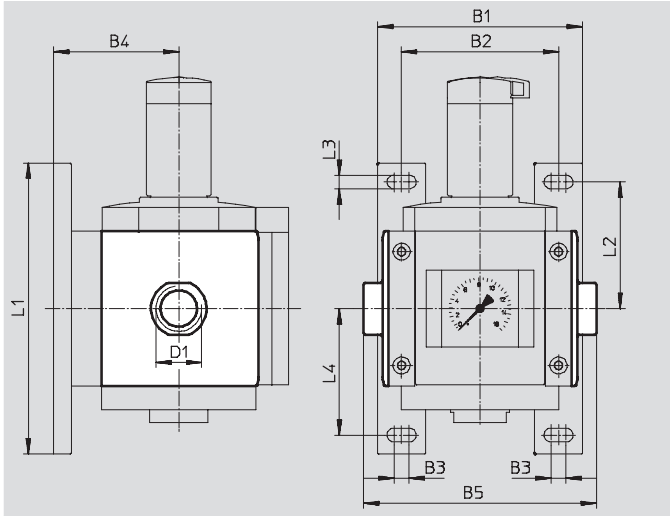
On-off/Soft-start Valves MS12N-EM/EE/DL/DE – Inch Series



Accessories

- 1
- Port plate MS12-AQ...
- Adapter for pneumatic connection

Material:
Die-cast aluminum
Free of copper and PTFE



Dimensions and Ordering Data												
B1	B2	B3	B4	B5	D1	L1	L2	L3	L4	Weight [lb]	Part No.	Type
6.38	4.88	0.47	3.90	7.24	1 NPT	9.06	3.94	0.43	3.94	2.60	537139	MS12-AQT
				7.24	1¼ NPT						537140	MS12-AQU
				7.24	1½ NPT						537141	MS12-AQV
				7.72	2 NPT						537142	MS12-AQW

- 3
- Body connector MS12-MV
- For connecting modules

Material:
Die-cast aluminum,
Free of copper and PTFE



Ordering Data			
Size	Weight [lb]	Part No.	Type
MS12	1.00	537134	MS12-MV

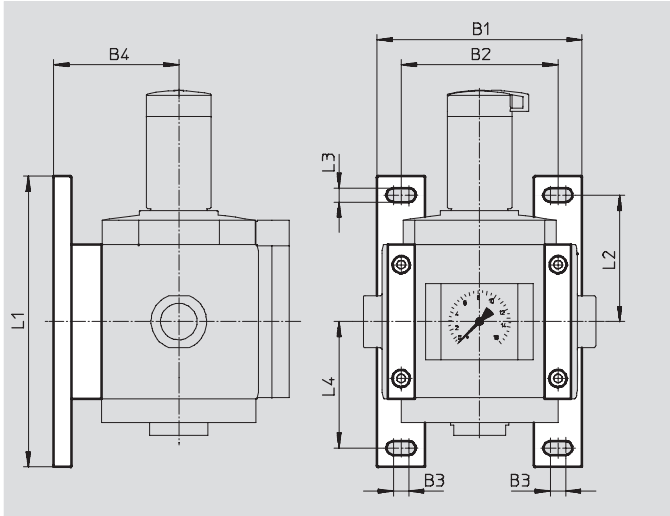
On-off/Soft-start Valves MS12N-EM/EE/DL/DE – Inch Series

Accessories

2 Mounting bracket MS12-WP

- To connect the modules for wall mounting
- In combination with a port plate for mounting an individual unit on a wall

Material:
Die-cast aluminum
Free of copper and PTFE

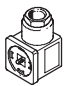


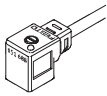
Dimensions and Ordering Data											
Size	B1	B2	B3	B4	L1	L2	L3	L4	Weight [[b]	Part No.	Type
MS12	6.38	4.88	0.47	3.90	9.06	3.94	0.43	3.94	1.40	537133	MS12-WP


On-off/Soft-start Valves MS12N-EM/EE/DL/DE – Inch Series

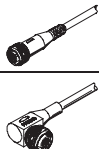
Accessories


FESTO


10 Ordering Data – Plug Socket MSSD					Technical data → www.festo.com/catalog/mssd	
	Description	Operating voltage range	Electrical connection	Type of mounting cable connection	Part No.	Type
	for MS12-EE/DE	≤ 250 V AC/DC	3-pin	Clamping screws	34583	MSSD-C
			4-pin	Insulation displacement technology	192748	MSSD-C-S-M16

9 Ordering Data – Plug Socket with Cable KMC					Technical data → www.festo.com/catalog/kmc	
	Description	Operating voltage range	Switching status display	Cable length [ft]	Part No.	Type
	for MS12-EE/DE	24 V DC	LED	8.2	30931	KMC-1-24DC-2,5-LED
		24 V DC	LED	16.4	30933	KMC-1-24DC-5-LED
		24 V DC	LED	32.8	193459	KMC-1-24-10-LED
		230 V AC	–	8.2	30932	KMC-1-230AC-2,5
		230 V AC	–	16.4	30934	KMC-1-230AC-5

8 Ordering Data – Illuminating Seal MC-LD			Technical data → www.festo.com/catalog/mc-ld	
	Description	Operating voltage range	Part No.	Type
	for plug socket with cable KMC and plug socket MSSD-C	12 ... 24 V DC	19145	MC-LD-12-24DC
		230 V DC/AC ±10%	19146	MC-LD-230AC

1 Ordering Data – Plug Socket with Cable SIM-M12			Technical data → www.festo.com/catalog/sim-m12	
	Electrical connection	Cable length [ft]	Part No.	Type
	M12x1, 4-pin	16.4	164259	SIM-M12-4GD-5-PU
	M12x1, 4-pin	16.4	164258	SIM-M12-4WD-5-PU

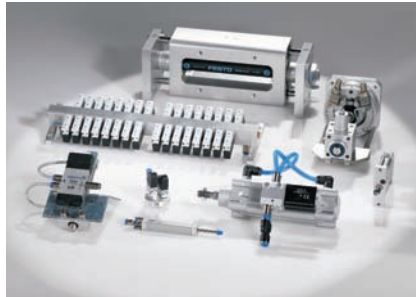
7 Ordering Data – Pressure Gauge MA					Technical data ➔ www.festo.com/catalog/ma	
	Nominal size	Pneumatic connection	Indicating range		Part No.	Type
			[bar]	[psi]		
	Pressure gauge MA, DIN EN 837-1					
	1.57	R¼	0 ... 16	0 ... 232	187080	MA-40-16-R¼-EN
	Pressure gauge MA, DIN EN 837-1, with red-green range					
	1.97	R¼	–	0 ... 232	526790	MA-50-232-R¼-PSI-E-RG

4 Ordering Data – Silencer U			Technical data → www.festo.com/catalog/u	
	Description	Pneumatic connection	Part No.	Type
	for MS12-EM/EE	G1	151990	U-1-B

Product Range and Company Overview

A Complete Suite of Automation Services

Our experienced engineers provide complete support at every stage of your development process, including: conceptualization, analysis, engineering, design, assembly, documentation, validation, and production.



Custom Automation Components

Complete custom engineered solutions



Custom Control Cabinets

Comprehensive engineering support and on-site services



Complete Systems

Shipment, stocking and storage services

The Broadest Range of Automation Components

With a comprehensive line of more than 30,000 automation components, Festo is capable of solving the most complex automation requirements.



Electromechanical

Electromechanical actuators, motors, controllers & drives



Pneumatics

Pneumatic linear and rotary actuators, valves, and air supply



PLCs and I/O Devices

PLC's, operator interfaces, sensors and I/O devices

Supporting Advanced Automation... As No One Else Can!

Festo is a leading global manufacturer of pneumatic and electromechanical systems, components and controls for industrial automation, with more than 11,500 employees in 56 national headquarters serving more than 180 countries. For more than 80 years, Festo has continuously elevated the state of manufacturing with innovations and optimized motion control solutions that deliver higher performing, more profitable automated manufacturing and processing equipment. Our dedication to the advancement of automation extends beyond technology to the education and development of current and future automation and robotics designers with simulation tools, teaching programs, and on-site services.

Quality Assurance, ISO 9001 Certification

Festo Corporation is committed to provide Festo products and services that will meet or exceed our customers' requirements in product quality, delivery, customer service and satisfaction.

All Festo locations within the United States are registered to ISO 9001.



Festo North America

United States

Customer Resource Center

502 Earth City Expy., Suite 125
Earth City, MO 63045

For ordering assistance, or to find
your nearest Festo Distributor,

Call: 1.800.99.FESTO

Fax: 1.800.96.FESTO

Email: customer.service@us.festo.com

For technical support,

Call: 1.866.GO.FESTO

Fax: 1.800.96.FESTO

Email: product.support@us.festo.com

Headquarters

Festo Corporation
395 Moreland Road
P.O. Box 18023
Hauppauge, NY 11788
www.festo.com/us

Sales Offices

Appleton

N. 922 Tower View Drive, Suite N
Greenville, WI 54942

Boston

120 Presidential Way, Suite 330
Woburn, MA 01801

Chicago

1441 East Business Center Drive
Mt. Prospect, IL 60056

Dallas

1825 Lakeway Drive, Suite 600
Lewisville, TX 75057

Detroit - Automotive Engineering Center

2601 Cambridge Court, Suite 320
Auburn Hills, MI 48326

New York

395 Moreland Road
Hauppauge, NY 11788

Silicon Valley

2800 Collier Canyon Road
Livermore, CA 94550

Design and Manufacturing Operations



East: 395 Moreland Road, Hauppauge, NY 11788



Central: 1441 East Business Center Drive, Mt. Prospect, IL 60056



West: 2800 Collier Canyon Road, Livermore, CA 94550

Mexico

Headquarters

Festo Pneumatic, S.A.
Av. Ceylán 3, Col. Tequesquahuac
54020 Tlalnepantla, Edo. de México
Call: 011 52 [55] 53 21 66 00
Fax: 011 52 [55] 53 21 66 65
Email: festo.mexico@mx.festo.com
www.festo.com/mx



Canada

Headquarters

Festo Inc.
5300 Explorer Drive
Mississauga, Ontario L4W 5G4
Call: 1.905.624.9000
Fax: 1.905.624.9001
Email: info.ca@ca.festo.com
www.festo.com/ca



Festo Worldwide

Argentina Australia Austria Belarus Belgium Brazil Bulgaria Canada Chile China Colombia Croatia Czech Republic Denmark
Estonia Finland France Germany Great Britain Greece Hong Kong Hungary India Indonesia Iran Ireland Israel Italy Japan
Latvia Lithuania Malaysia Mexico Netherlands New Zealand Norway Peru Philippines Poland Romania Russia Serbia Singapore
Slovakia Slovenia South Africa South Korea Spain Sweden Switzerland Taiwan Thailand Turkey Ukraine United States Venezuela

www.festo.com