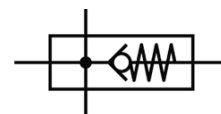
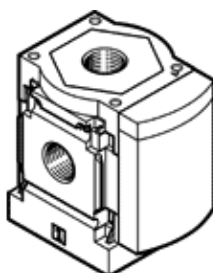


Modul de ramificare MS6-FRM-1/2-I-Z

Cod: 536974

FESTO

cu functiune de supapa integrata, directie debitului de tranzit de la dreapta la stanga.



Fisa tehnica

Caracteristica	valoare
pozitie instalare	oricare
structura constructiva	modul de ramificatie cu supapa de sens unic
presiune de operare	0 ... 20 bar
debit standard in directia principala de curgere 1->2	6.000 l/min
debit standard la iesirea superioara	3.100 l/min
debit standard la iesirea inferioara	3.300 l/min
mediu de operare	Compressed air in accordance with ISO8573-1:2010 [7:4:4] Inert gases
Note on operating and pilot medium	Lubricated operation possible (subsequently required for further operation)
clasa de rezistenta la coroziune KBK	2
temperatura de depozitare	-10 ... 60 °C
temperatura mediului	-10 ... 60 °C
greutate produs	400 g
racord pneumatic 1	G1/2
racord pneumatic 2	G1/2
racord pneumatic 3	G1/2
racord pneumatic 4	G1/2
indicatie material	conform RoHS
informatii referitoare la material pentru carcasa	aluminiu turnat sub presiune