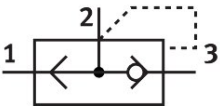


Quick exhaust valve SE-1/4-B

Part number: 9686

FESTO



Data sheet

Feature	Value
Valve function	Quick exhaust
Pneumatic connection 1	G1/4
Pneumatic connection 2	G1/4
Type of mounting	Screw-in
Standard nominal flow rate exhaust air 6->5 bar	1200 l/min
Standard nominal flow rate pressurization 6->5 bar	960 l/min
Operating pressure	0.5 bar...10 bar
Ambient temperature	-20 °C...75 °C
Housing material	Die-cast zinc
Operating medium	Compressed air as per ISO 8573-1:2010 [7:::]
Nominal width	7 mm
Mounting position	Any
Information on operating and pilot media	Operation with oil lubrication possible (required for further use)
LABS (PWIS) conformity	VDMA24364-B1/B2-L
Temperature of medium	-20 °C...75 °C
Product weight	100 g
Pneumatic connection 3	G1/4
Seals material	NBR