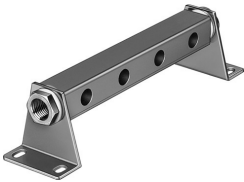


# Common supply manifold

## PAL-1/2-4

Part number: 9494

FESTO



### Data sheet

Feature	Value
Mounting position	Any
Max. no. of valve positions	4
LABS (PWIS) conformity	VDMA24364-B1/B2-L
Product weight	1060 g
Type of mounting	With mounting bracket
Pneumatic connection 1	G3/4
Note on materials	RoHS-compliant
Material of sub-base	Aluminum Anodized