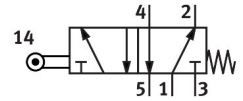


Roller lever valve R-5-1/4-B

Part number: 8996

FESTO



Data sheet

Feature	Value
Valve function	5/2, monostable
Actuation type	Mechanical
Standard nominal flow rate	550 l/min
Pneumatic working port	G1/4
Operating pressure	-0.095 MPa...1 MPa -0.95 bar...10 bar
Structural design	Plate seat
Nominal width	7 mm
Type of control	Direct
LABS (PWIS) conformity	VDMA24364-B1/B2-L
Ambient temperature	-10 °C...60 °C
Actuating force	75 N
Product weight	340 g
Type of mounting	With through-hole
Pneumatic connection 1	G1/4
Pneumatic connection 2	G¼
Pneumatic connection 3	G1/4
Pneumatic connection 4	G1/4
Pneumatic connection 5	G1/4
Seals material	NBR
Housing material	Die-cast aluminum