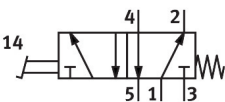


Foot valve

F-5-1/4-B

Part number: 8992

FESTO



Data sheet

Feature	Value
Valve function	5/2, monostable
Actuation type	Manual
Standard nominal flow rate	550 l/min
Pneumatic working port	G1/4
Operating pressure	-0.95 bar...10 bar
Structural design	Plate seat
Reset method	Mechanical spring
Nominal width	7 mm
Mounting position	Any
Type of control	Direct
Flow direction	Non-reversible
Operating medium	Compressed air as per ISO 8573-1:2010 [7:4:4]
LABS (PWIS) conformity	VDMA24364-B1/B2-L
Ambient temperature	-10 °C...60 °C
Actuating force	78 N
Product weight	705 g
Type of mounting	With through-hole
Pneumatic connection 1	G1/4
Pneumatic connection 2	G1/4
Pneumatic connection 3	G1/4
Pneumatic connection 4	G1/4
Pneumatic connection 5	G1/4
Seals material	NBR
Housing material	Die-cast aluminum