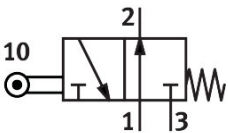


# Roller lever valve

## RO-3-1/4-B

Part number: 8991

FESTO



### Data sheet

Feature	Value
Valve function	3/2, open, monostable
Actuation type	Mechanical
Standard nominal flow rate	600 l/min
Pneumatic working port	G1/4
Operating pressure	-0.95 bar...10 bar
Structural design	Plate seat
Nominal width	7 mm
Type of control	Direct
Explosion prevention and protection	Zone 1 (ATEX) Zone 2 (ATEX) Zone 21 (ATEX) Zone 22 (ATEX)
LABS (PWIS) conformity	VDMA24364-B1/B2-L
Ambient temperature	-10 °C...60 °C
Actuating force	48 N
Product weight	230 g
Type of mounting	With through-hole
Pneumatic connection 1	G1/4
Pneumatic connection 2	G1/4
Pneumatic connection 3	G1/4
Seals material	NBR
Housing material	Die-cast aluminum