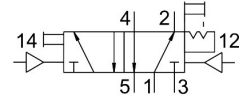


Pneumatic valve

JH-5-1/8

Part number: 8823

FESTO



Data sheet

Feature	Value
Valve function	5/2, bistable
Actuation type	Pneumatic
Width	26 mm
Standard nominal flow rate	600 l/min
Pneumatic working port	G1/8
Operating pressure	0 MPa...1 MPa 0 bar...10 bar
Structural design	Plate seat
Nominal width	5 mm
Width dimension	27 mm
Exhaust air function	With flow control option
Sealing principle	Soft
Mounting position	Any
Type of control	Direct
Pilot air supply port	External
Flow direction	Non-reversible
Lap	Underlap
Pilot pressure MPa	0.12 MPa...1 MPa
Pilot pressure	1.2 bar...10 bar
Max. switching frequency	12 Hz
Changeover time	7 ms
Operating medium	Compressed air as per ISO 8573-1:2010 [7:4:4]
Information on operating and pilot media	Operation with oil lubrication possible (required for further use)
Corrosion resistance class (CRC)	1 - Low corrosion stress
LABS (PWIS) conformity	VDMA24364-B1/B2-L
Storage temperature	-20 °C...60 °C
Temperature of medium	-10 °C...60 °C
Ambient temperature	-10 °C...60 °C
Product weight	330 g
Type of mounting	On terminal strip With through-hole Optionally:

Feature	Value
Pilot air port 12	G1/8
Pilot air port 14	G1/8
Pneumatic connection 1	G1/8
Pneumatic connection 2	G1/8
Pneumatic connection 3	G1/8
Pneumatic connection 4	G1/8
Pneumatic connection 5	G1/8
Note on materials	RoHS-compliant
Seals material	NBR TPE-U(PU)
Housing material	Die-cast aluminum