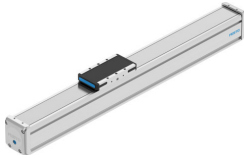


Guide axis ELFD-KF-60- -

Part number: 8182487

FESTO



Data sheet

Feature	Value
Working stroke	50 mm...8500 mm
Size	60
Stroke reserve	4.5 mm
Mounting position	Any
Guide	Recirculating ball bearing guide
Structural design	Guide
Max. acceleration	50 m/s ²
Max. speed	3 m/s
Duty cycle	100%
Corrosion resistance class (CRC)	0 - No corrosion stress
LABS (PWIS) conformity	VDMA24364 zone III
Suitability for the production of Li-ion batteries	Product corresponds to Festo's internal product definition for use in battery production: Metals with more than 1% by mass of copper, zinc or nickel are excluded from use. The exceptions are nickel in steel, chemically nickel-plated surfaces, circuit boards, cables, electrical plug connectors and coils
Degree of protection	IP40
Ambient temperature	0 °C...60 °C
2nd moment of area Iy	485200 mm ⁴
2nd moment of area Iz	730600 mm ⁴
Max. force Fy	2200 N...4400 N
Max. force Fz	2200 N...4400 N
Max. torque Mx	38 Nm...75 Nm
Max. torque My	42 Nm...390 Nm
Max. torque Mz	15 Nm...140 Nm
Max. force Fy total axis	1513 N...3026 N
Max. force Fz total axis	3000 N...3200 N
Max. moment Mx total axis	68 Nm...119 Nm
Max. moment My total axis	40 Nm...128 Nm
Max. moment Mz total axis	50 Nm...133 Nm
Torsion moment of inertia It	192900 mm ⁴
Displacement force	6 N

Feature	Value
Reference service life	5000 km
Fy with theoretical service life of 100 km (from a guide perspective only)	9208 N...18415 N
Fz with theoretical service life of 100 km (from a guide perspective only)	9208 N...18415 N
Mx with theoretical service life of 100 km (from a guide perspective only)	157 Nm...314 Nm
My with theoretical service life of 100 km (from a guide perspective only)	60 Nm...500 Nm
Mz with theoretical service life of 100 km (from a guide perspective only)	60 Nm...500 Nm
Moving mass	419 g...643 g
Basic weight with 0 mm stroke	1261 g...1683 g
Additional weight per 10 mm stroke	49 g
Material of end caps	Aluminum gravity die-cast, painted
Profile material	Wrought aluminum alloy, anodized
Note on materials	RoHS-compliant
Cover strip material	High-alloy stainless steel
Cover material	Aluminum gravity die-cast, painted
Slide carriage material	Steel
Guide rail material	Steel
Slide material	Wrought aluminum alloy