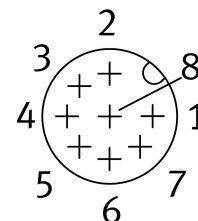
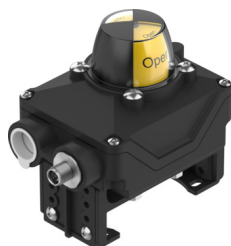


Limit switch box SRBK-CA4-YR90-MW-1-1W-M12

Part number: 8182181

FESTO



Data sheet

Feature	Value
CE marking (see declaration of conformity)	As per EU EMC directive As per EU low voltage directive As per EU RoHS directive
UKCA marking (see declaration of conformity)	To UK instructions for EMC To UK RoHS instructions To UK instructions for electrical equipment
Note on materials	RoHS-compliant
Measured variable	Position
Measuring principle	Mechanical/electrical
Sensing range	0 deg...90 deg
Ambient temperature	-20 °C...70 °C
Switching output	Contact-based
Switching element function	Toggle switch, single-pin
Max. switching output voltage DC	30 V
Max. output current DC	1000 mA
Max. switching capacity DC	30 W
DC operating voltage range	0 V...30 V
Microswitch type	Omron SS-5
Electrical connection	M12x1
Electrical connection 1, connection type	Plug
Electrical connection 1, cable outlet	Straight
Electrical connection 1, design	Round
Electrical connection 1, connection technology	M12x1 A-coded as per EN 61076-2-101
Electrical connection 1, number of pins/wires	8
Cable fitting	M20x1.5
Dimensions W x L x H	143 mm x 85 mm x 128 mm 143 mm x 85 mm x 138 mm 143 mm x 85 mm x 158 mm 159 mm x 85 mm x 128 mm 159 mm x 85 mm x 138 mm

Feature	Value
Connection point for positioner and position sensor conforms to standard	VDI/VDE 3845 size AA 1 VDI/VDE 3845 size AA 2 VDI/VDE 3845 size AA 3
Mounting position	Any
Product weight	500 g
Housing colour	Black
Housing material	PA
Seals material	NBR
Shaft material	PA
Material of screws	Stainless steel
Material of mounting bracket	PA
Circlip material	High-alloy stainless steel
Protective cap material	PC
Switching status indication	Optical
Position indicator	Yellow/red
Angle detection setting range	0 deg...90 deg
Storage temperature	-20 °C...50 °C
Degree of protection	IP66 IP67
Shock resistance	Shock test with severity level 1 as per FN 942017-5 and EN 60068-2-27
Vibration resistance	Transport application test with severity level 1 as per FN 942017-4 and EN 60068-2-6
Corrosion resistance class (CRC)	3 - High corrosion stress
LABS (PWIS) conformity	VDMA24364 zone III
Contamination level	3