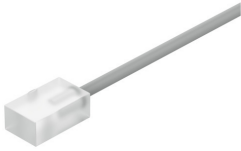


Proximity switch SDBF-FES-1L-NU-K-N-M8

Part number: 8182049

FESTO



Data sheet

Feature	Value
Design	Block design
Note on materials	RoHS-compliant
Measured variable	Position
Measuring principle	Magneto-resistive
Ambient temperature	-4 °F...176 °F
Switching output	NPN
Switching element function	N/O contact
On time	4 µs
Max. output current	500 mA
Max. switching capacity DC	12 W
Voltage drop	1 V
Short-circuit protection	yes
DC operating voltage range	6 V...24 V
Reverse polarity protection	yes
Electrical connection 1, connection type	Cable with socket
Electrical connection 1, connection technology	M8x1 A-coded as per EN 61076-2-104
Electrical connection 1, number of pins/wires	3
Connection outlet orientation	Longitudinal
Color cable sheath	Gray
Material of cable sheath	PVC
Type of mounting	With mounting kit
Mounting position	Any
Housing colour	Transparent
Housing material	PA
Switching status indication	LED
Ambient temperature with flexible cable installation	-4 °F...176 °F
Degree of protection	IP67 NEMA 4
LABS (PWIS) conformity	VDMA24364 zone III