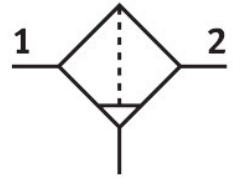


Filter

MS2-LF-QS6-C-P-M-F1A-B

Part number: 8181092

FESTO



Data sheet

Feature	Value
Size	2
Series	MS
Mounting position	Vertical +/- 5°
Grade of filtration	5 µm
Condensate drain	Manually rotating
Structural design	Sinter filter with centrifugal separator
Operating pressure	0.1 MPa...1 MPa 1 bar...10 bar 14.5 psi...145 psi
Standard nominal flow rate	250 l/min
Operating medium	Compressed air as per ISO 8573-1:2010 [7:4:4] Inert gas
Corrosion resistance class (CRC)	1 - Low corrosion stress
LABS (PWIS) conformity	VDMA24364-B1/B2-L
Suitability for the production of Li-ion batteries	Product corresponds to Festo's internal product definition for use in battery production: Metals with more than 1% by mass of copper, zinc or nickel are excluded from use. The exceptions are nickel in steel, chemically nickel-plated surfaces, circuit boards, cables, electrical plug connectors and coils
Cleanroom class	Class 7 according to ISO 14644-1
Storage temperature	-5 °C...50 °C
Air quality class at the output	Compressed air as per ISO 8573-1:2010 [6:4:4]
Temperature of medium	-5 °C...50 °C
Ambient temperature	-5 °C...50 °C
Product weight	42.1 g
Type of mounting	Front panel mounting Line installation With accessories Optionally:
Pneumatic connection 1	QS-6
Pneumatic connection 2	QS-6
Note on materials	RoHS-compliant
Seals material	NBR
Material of spring	High-alloy steel

Feature	Value
Compressed air filter material	PE
Housing material	PA-reinforced
Diaphragm material	NBR
Material of bowl	PC