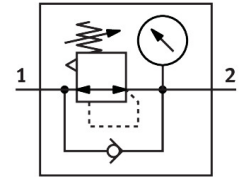


# Pressure regulator MS4-LR-1/4-D6-AG-MPA-F1A-B

Part number: 8175242

FESTO



## Data sheet

Feature	Value
Size	4
Series	MS
Actuator lock	Rotary knob with detent
Mounting position	Any
Structural design	Pressure regulator with pressure gauge Directly controlled piston regulator
Controller function	Outlet pressure constant With secondary exhausting With return flow function
Displayable unit(s)	MPa
Pressure gauge	with pressure gauge
Operating pressure	0.1 MPa...1 MPa 1 bar...10 bar
Pressure regulation range	0.3 bar...7 bar
Max. pressure hysteresis	0.05 MPa 0.5 bar 7.25 psi
Standard nominal flow rate	1800 l/min
Operating medium	Compressed air as per ISO 8573-1:2010 [7:4:4] Inert gas
Information on operating and pilot media	Operation with oil lubrication possible (required for further use)
Corrosion resistance class (CRC)	1 - Low corrosion stress
LABS (PWIS) conformity	VDMA24364-B1/B2-L
Suitability for the production of Li-ion batteries	Product corresponds to Festo's internal product definition for use in battery production: Metals with more than 1% by mass of copper, zinc or nickel are excluded from use. The exceptions are nickel in steel, chemically nickel-plated surfaces, circuit boards, cables, electrical plug connectors and coils
Cleanroom class	Class 7 according to ISO 14644-1
Storage temperature	-5 °C...50 °C
Temperature of medium	-5 °C...50 °C
Ambient temperature	-5 °C...50 °C
Product weight	165 g

Feature	Value
Type of mounting	Front panel mounting Line installation With accessories Optionally:
Pneumatic connection 1	G1/4
Pneumatic connection 2	G1/4
Note on materials	RoHS-compliant
Lower cover material	PA
Seals material	NBR
Rotary knob material	POM
Material of spring	High-alloy stainless steel
Housing material	PA-reinforced
Valve tappet material	POM