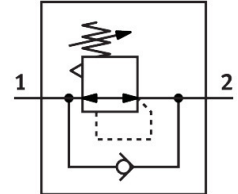


# Pressure regulator MS2-LR-M5-D6-A8-F1A-B

Part number: 8167260

**FESTO**



## Data sheet

Feature	Value
Size	2
Series	MS
Actuator lock	Rotary knob with detent
Mounting position	Any
Structural design	Directly controlled diaphragm regulator
Controller function	Outlet pressure constant With secondary exhausting With return flow function
Pressure gauge	G1/8 prepared
Operating pressure	0.1 MPa...1 MPa 1 bar...10 bar
Pressure regulation range	0.5 bar...7 bar
Max. pressure hysteresis	0.025 MPa 0.25 bar 3.625 psi
Standard nominal flow rate	170 l/min
Operating medium	Compressed air as per ISO 8573-1:2010 [7:4:4] Inert gas
Corrosion resistance class (CRC)	1 - Low corrosion stress
LABS (PWIS) conformity	VDMA24364-B1/B2-L
Suitability for the production of Li-ion batteries	Product corresponds to Festo's internal product definition for use in battery production: Metals with more than 1% by mass of copper, zinc or nickel are excluded from use. The exceptions are nickel in steel, chemically nickel-plated surfaces, circuit boards, cables, electrical plug connectors and coils
Cleanroom class	Class 4 according to ISO 14644-1
Storage temperature	-5 °C...50 °C
Temperature of medium	-5 °C...50 °C
Ambient temperature	-5 °C...50 °C
Product weight	30.8 g
Type of mounting	Front panel mounting Line installation With accessories Optionally:

Feature	Value
Pneumatic connection 1	M5
Pneumatic connection 2	M5
Note on materials	RoHS-compliant
Lower cover material	PA
Seals material	NBR
Rotary knob material	POM
Material of spring	High-alloy steel
Housing material	PA-reinforced
Diaphragm material	NBR
Valve tappet material	Wrought aluminum alloy NBR