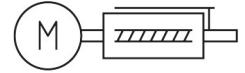
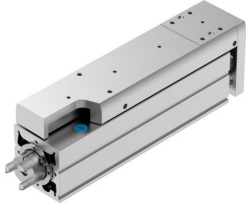


# Mini slide

## EGSC-BS-KF-60-150-5P

Part number: 8162084

FESTO



## Data sheet

Feature	Value
Working stroke	150 mm
Size	60
Stroke reserve	0 mm
Reversing backlash	150 µm
Screw diameter	12 mm
Spindle pitch	5 mm/U
Mounting position	Any
Guide	Recirculating ball bearing guide
Structural design	Electrical mini-slide with ball screw drive
Motor type	Stepper motor Servo motor
Homing	Fixed stop block positive Fixed stop block, negative Reference switch
Spindle type	Ball screw drive
Position sensing	For proximity sensor
Max. acceleration	5 m/s <sup>2</sup>
Max. rotational speed	3000 rpm
Max. speed	0.25 m/s
Repetition accuracy	±0.015 mm
Duty cycle	100%
Corrosion resistance class (CRC)	0 - No corrosion stress
LABS (PWIS) conformity	VDMA24364 zone III
Suitability for the production of Li-ion batteries	Product corresponds to Festo's internal product definition for use in battery production: Metals with more than 1% by mass of copper, zinc or nickel are excluded from use. The exceptions are nickel in steel, chemically nickel-plated surfaces, circuit boards, cables, electrical plug connectors and coils
Cleanroom class	Class 9 according to ISO 14644-1
Noise level	55 dB(A)
Degree of protection	IP40
Ambient temperature	0 °C...50 °C
Impact energy in the end positions	0.04 mJ

Feature	Value
Note on the impact energy in the end positions	At maximum speed of the reference run of 0.01 m/s
Fixed bearing dynamic basic load rating	13321 N
Linear guide dynamic basic load rating	13400 N
Dynamic basic load rating, ball screw drive	5900 N
No-load torque at maximum travel speed	0.125 Nm
No-load torque at minimum travel speed	0.032 Nm
Max. force F <sub>y</sub>	4937 N
Max. force F <sub>z</sub>	4937 N
F <sub>y</sub> with theoretical service life of 100 km (from a guide perspective only)	13400 N
F <sub>z</sub> with theoretical service life of 100 km (from a guide perspective only)	13400 N
Max. torque M <sub>x</sub>	20 Nm
Max. torque M <sub>y</sub>	30 Nm
Max. torque M <sub>z</sub>	30 Nm
M <sub>x</sub> with theoretical service life of 100 km (from a guide perspective only)	107 Nm
M <sub>y</sub> with theoretical service life of 100 km (from a guide perspective only)	117 Nm
M <sub>z</sub> with theoretical service life of 100 km (from a guide perspective only)	117 Nm
Max. radial force on actuator shaft	230 N
Max. feed force F <sub>x</sub>	250 N
Guide value for payload, horizontal	25 kg
Guide value for payload, vertical	25 kg
Ball screw drive statistical basic load rating	10600 N
Linear guide statistical basic load rating	26900 N
Mass moment of inertia J <sub>H</sub> per meter of stroke	0.11539 kgcm <sup>2</sup>
Mass moment of inertia J <sub>L</sub> per kg of payload	0.00633 kgcm <sup>2</sup>
Mass moment of inertia J <sub>O</sub>	0.06624 kgcm <sup>2</sup>
Feed constant	5 mm/U
Statistical fixed bearing load rating	7000 N
Reference service life	5000 km
Maintenance interval	Life-time lubrication
Moving mass at 0 mm stroke	675 g
Additional moving mass per 10 mm stroke	40 g
Product weight	2980 g
Basic weight with 0 mm stroke	1555 g
Additional weight per 10 mm stroke	95 g
Type of mounting	With internal thread With centering sleeve With accessories With cylindrical pin
Interface code, actuator	T42
Note on materials	RoHS-compliant
Slide carriage material	Roller bearing steel
Guide rail material	Roller bearing steel
Housing material	Wrought aluminum alloy, anodized
Material of yoke plate	Wrought aluminum alloy, anodized
Piston rod material	High-alloy stainless steel
Slide material	Wrought aluminum alloy, anodized
Spindle nut material	Roller bearing steel
Spindle material	Roller bearing steel