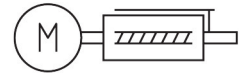
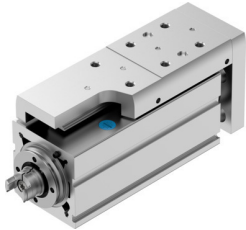


Mini slide

EGSC-BS-KF-45-50-3P

Part number: 8162080

FESTO



Data sheet

Feature	Value
Working stroke	50 mm
Size	45
Stroke reserve	0 mm
Reversing backlash	150 µm
Screw diameter	10 mm
Spindle pitch	3 mm/U
Mounting position	Any
Guide	Recirculating ball bearing guide
Structural design	Electrical mini-slide with ball screw drive
Motor type	Stepper motor Servo motor
Homing	Fixed stop block positive Fixed stop block, negative Reference switch
Spindle type	Ball screw drive
Position sensing	For proximity sensor
Max. acceleration	5 m/s ²
Max. rotational speed	3600 rpm
Max. speed	0.18 m/s
Repetition accuracy	±0.015 mm
Duty cycle	100%
Corrosion resistance class (CRC)	0 - No corrosion stress
LABS (PWIS) conformity	VDMA24364 zone III
Suitability for the production of Li-ion batteries	Product corresponds to Festo's internal product definition for use in battery production: Metals with more than 1% by mass of copper, zinc or nickel are excluded from use. The exceptions are nickel in steel, chemically nickel-plated surfaces, circuit boards, cables, electrical plug connectors and coils
Cleanroom class	Class 9 according to ISO 14644-1
Noise level	55 dB(A)
Degree of protection	IP40
Ambient temperature	0 °C...50 °C
Impact energy in the end positions	0.01 mJ

Feature	Value
Note on the impact energy in the end positions	At maximum speed of the reference run of 0.01 m/s
Fixed bearing dynamic basic load rating	7413 N
Linear guide dynamic basic load rating	3240 N
Dynamic basic load rating, ball screw drive	3500 N
No-load torque at maximum travel speed	0.059 Nm
No-load torque at minimum travel speed	0.015 Nm
Max. force F _y	1314 N
Max. force F _z	1314 N
F _y with theoretical service life of 100 km (from a guide perspective only)	3240 N
F _z with theoretical service life of 100 km (from a guide perspective only)	3240 N
Max. torque M _x	8.1 Nm
Max. torque M _y	7 Nm
Max. torque M _z	7 Nm
M _x with theoretical service life of 100 km (from a guide perspective only)	20 Nm
M _y with theoretical service life of 100 km (from a guide perspective only)	17 Nm
M _z with theoretical service life of 100 km (from a guide perspective only)	17 Nm
Max. radial force on actuator shaft	180 N
Max. feed force F _x	120 N
Guide value for payload, horizontal	12 kg
Guide value for payload, vertical	12 kg
Ball screw drive statistical basic load rating	6300 N
Linear guide statistical basic load rating	5630 N
Mass moment of inertia J _H per meter of stroke	0.04918 kgcm ²
Mass moment of inertia J _L per kg of payload	0.0028 kgcm ²
Mass moment of inertia J _O	0.01045 kgcm ²
Feed constant	3 mm/U
Statistical fixed bearing load rating	3966 N
Reference service life	5000 km
Maintenance interval	Life-time lubrication
Moving mass at 0 mm stroke	212 g
Additional moving mass per 10 mm stroke	30 g
Product weight	922 g
Basic weight with 0 mm stroke	608 g
Additional weight per 10 mm stroke	63 g
Type of mounting	With internal thread With centering sleeve With accessories With cylindrical pin
Interface code, actuator	V32
Note on materials	RoHS-compliant
Slide carriage material	Roller bearing steel
Guide rail material	Roller bearing steel
Housing material	Wrought aluminum alloy, anodized
Material of yoke plate	Wrought aluminum alloy, anodized
Piston rod material	High-alloy stainless steel
Slide material	Wrought aluminum alloy, anodized
Spindle nut material	Roller bearing steel
Spindle material	Roller bearing steel