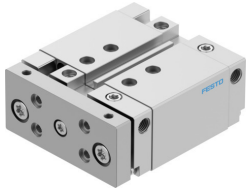


# Guided drive DFM-25-25-B-PPV-A-GF

Part number: 8161421

**FESTO**



## Data sheet

| Feature                                  | Value  |
|--|--|
| Stroke                                   | 25 mm  |
| Piston diameter                          | 25 mm  |
| Drive unit operating mode                | Yoke   |
| Cushioning                               | Pneumatic cushioning, adjustable at both ends                      |
| Mounting position                        | Any  |
| Guide                                    | Sliding guide  |
| Structural design                        | Guide  |
| Position sensing                         | For proximity sensor   |
| Operating pressure                       | 0.15 MPa...1 MPa<br>1.5 bar...10 bar                               |
| Mode of operation                        | Double-acting  |
| Operating medium                         | Compressed air as per ISO 8573-1:2010 [7:4:4]                      |
| Information on operating and pilot media | Operation with oil lubrication possible (required for further use) |
| Corrosion resistance class (CRC)         | 2 - Moderate corrosion stress                                      |
| LABS (PWIS) conformity                   | VDMA24364-B1/B2-L  |
| Cleanroom class                          | Class 7 according to ISO 14644-1                                   |
| Ambient temperature                      | -20 °C...80 °C   |
| Impact energy in the end positions       | 0.3 J  |
| Theoretical force at 6 bar, retracting   | 247 N  |
| Theoretical force at 6 bar, advancing    | 295 N  |
| Alternative connections                  | See product drawing  |
| Pneumatic connection                     | G1/8   |
| Note on materials                        | RoHS-compliant   |
| Cover material                           | Wrought aluminum alloy   |
| Seals material                           | NBR  |
| Housing material                         | Wrought aluminum alloy   |
| Piston rod material                      | High-alloy stainless steel   |