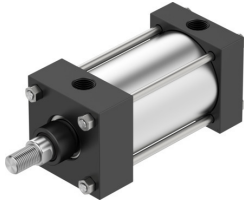


# Standards-based cylinder DSNB-N-...-2"- -

Part number: 8161112

FESTO



## Data sheet

| Feature              | Value   |
|----------------------|---|
| Stroke               | 0.0625 in...98.9 in   |
| Piston diameter      | 2 "   |
| Piston rod thread    | 7/8-14 UNF-2A<br>7/16-20 UNF-2B<br>7/16-20 UNF-2A<br>3/4-16 UNF-2B<br>3/4-16 UNF-2A<br>1/2-20 UNF-2A  |
| Cushioning           | Elastic cushioning rings/pads at both ends<br>Pneumatic cushioning, adjustable at both ends<br>No cushioning<br>Pneumatic cushioning at both ends, non-adjustable<br>Pneumatic cushioning at the front, non-adjustable<br>Pneumatic cushioning at the rear, non-adjustable<br>Pneumatic cushioning at the front, adjustable<br>Pneumatic cushioning at the rear, adjustable |
| Mounting position    | Any   |
| Conforms to standard | NFPA/T3.6.7   |
| Piston rod end       | External thread<br>Bolt with male thread<br>Internal thread   |
| Structural design    | Piston<br>Piston rod<br>Tie rod<br>Cylinder barrel  |
| Position sensing     | For proximity sensor<br>None  |

| Feature                                  | Value   |
|--|---|
| Variants                                 | Supply port, rotated 180°<br>Supply port, rotated 270°<br>Supply port, rotated 90°<br>Supply port, lateral<br>Flange on end cap<br>Flange on bearing cap<br>Foot mounting<br>Noise reduction on both sides<br>Extended external thread piston rod<br>Extended piston rod<br>Direct mounting via thread, frontal<br>Swiveling rod eye mounting on the end cap<br>Trunnion mounting on bearing cap<br>Trunnion mounting on end cap<br>Metal scraper<br>Transverse load increased<br>Low friction<br>Through piston rod<br>Screwed-on swivel mounting position<br>Swivel mounting on end cap<br>Swivel clevis on end cap<br>Spacer bolt on end cap end<br>Spacer bolts at both ends<br>Spacer bolt on bearing cap end<br>Temperature range 0 to + 150°C<br>Piston rod at one end |
|  | Rotated through 0°<br>Rotated through 90°<br>Rotated through 180°<br>Rotated through 270°   |
| Operating pressure                       | 0.048 MPa...1 MPa<br>0.48 bar...10 bar<br>6.96 psi...145 psi  |
| Mode of operation                        | Double-acting   |
| Operating medium                         | Compressed air as per ISO 8573-1:2010 [7:4:4]   |
| Information on operating and pilot media | Operation with oil lubrication possible (required for further use)  |
| Corrosion resistance class (CRC)         | 1 - Low corrosion stress  |
| LABS (PWIS) conformity                   | VDMA24364 zone III  |
| Ambient temperature                      | -20 °C...150 °C   |
| Ambient temperature Fahrenheit           | -4 °F...302 °F  |
| Theoretical force at 6 bar, retracting   | 990 N   |
| Theoretical force at 6 bar, advancing    | 1178 N  |
| Type of mounting                         | Direct fastening via thread<br>With accessories<br>Optionally:  |
| Pneumatic connection                     | 1/8 NPT<br>1/4 NPT<br>3/8 NPT   |
| Note on materials                        | RoHS-compliant  |
| Cover material                           | Wrought aluminum alloy, anodized  |
| Seals material                           | FPM<br>NBR<br>PUR   |
| Piston rod material                      | Steel, hard-chrome-plated   |
| Material of cylinder barrel              | Wrought aluminum alloy, smooth-anodized   |