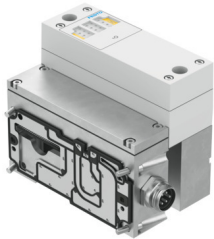


# Pneumatic interface VABA-S6-1-X2-F1-CB2-AL

Part number: 8152435

**FESTO**



## Data sheet

Feature	Value
Vibration resistance	Transport application test with severity level 2 as per FN 942017-4 and EN 60068-2-6
Shock resistance	Shock test with severity level 2 as per FN 942017-5 and EN 60068-2-27
Valve manifold interface	Type 44, VTSA-F-CB
Diagnostics	Wire break per valve coil Short circuit of pneumatic valves Undervoltage of pneumatic valves
Max. no. of valve positions	12 for bistable pneumatic valves 24 for monostable pneumatic valves
LED indicators	1 group diagnostics
Parameterization	Fail-safe modes per channel Forcing per channel Idle mode per channel Module monitoring
Fuse protection (short circuit)	Internal electronic fuse per pneumatic valve output
DC operating voltage range	21.6 V...26.4 V
Intrinsic current consumption at nominal operating voltage	Typ. 15 mA for valves without CPX-FVDA-P2 Typ. 25 mA for electronics with CPX-FVDA-P2
Max. power supply per channel	0.2 A
Max. residual current per module	2 A
Nominal operating voltage DC	24 V
Electrical isolation between channel and internal bus	Yes, when using an additional supply for the pneumatic valves
CE marking (see declaration of conformity)	As per EU EMC directive As per EU RoHS directive
UKCA marking (see declaration of conformity)	To UK instructions for EMC To UK RoHS instructions
Corrosion resistance class (CRC)	0 - No corrosion stress
LABS (PWIS) conformity	VDMA24364-B1/B2-L
Storage temperature	-20 °C...60 °C
Degree of protection	IP65
Ambient temperature	-5 °C...50 °C
Product weight	1576 g
Electrical actuation	Fieldbus
Electrical connection valve, function	Power supply valve

Feature	Value
Pneumatic valve electrical connection, connection type	Plug
Electrical pneumatic valve connection, connection technology	7/8" round plug connector
Electrical pneumatic valve connection, number of pins/wires	5
Electrical connection	Via CPX
Note on materials	RoHS-compliant
Material of sub-base	Die-cast aluminum
Cover material	PA
Seals material	NBR
Material of screws	Steel