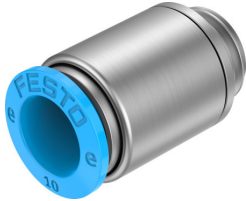


Push-in fitting NPQE-DK-G14-Q10-F1A-P10

Part number: 8144605

FESTO



Data sheet

Feature	Value
Size	Standard
Nominal width	7 mm
Type of seal on screwed plug	Sealing ring
Mounting position	Any
Design	Straight design
Pack size	10
Structural design	Push-pull principle
Variants	Metals with copper, zinc or nickel by mass as main constituent are excluded from use. Exceptions are nickel in steel, chemically nickel-plated surfaces, printed circuit boards, cables, electrical plug connectors and coils.
Operating pressure for entire temperature range	-0.095 MPa...0.8 MPa -0.95 bar...8 bar -13.775 psi...116 psi
Operating medium	Compressed air as per ISO 8573-1:2010 [7:4:4]
Information on operating and pilot media	Operation with oil lubrication possible
Corrosion resistance class (CRC)	1 - Low corrosion stress
LABS (PWIS) conformity	VDMA24364 zone III
Suitability for the production of Li-ion batteries	Product corresponds to Festo's internal product definition for use in battery production: Metals with more than 1% by mass of copper, zinc or nickel are excluded from use. The exceptions are nickel in steel, chemically nickel-plated surfaces, circuit boards, cables, electrical plug connectors and coils
Cleanroom class	Class 4 according to ISO 14644-1
Ambient temperature	-5 °C...60 °C
Nominal tightening torque	9 Nm
Tolerance for nominal tightening torque	± 20%
Product weight	17 g
Type of mounting	Internal hexagon, AF 7
Pneumatic connection 1	External thread G1/4
Pneumatic connection 2	for pneumatic tubing outside diameter 10 mm
Releasing ring color	Blue
Note on materials	RoHS-compliant
Housing material	High-alloy stainless steel

Feature	Value
Material of threaded seal	Aluminum TPEE
Releasing ring material	POM
Material of tubing seal	NBR
Material of tube retaining claw	High-alloy stainless steel