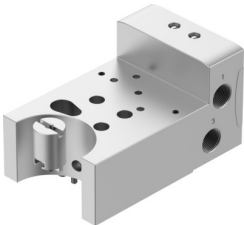


# Adapter plate VABA-C13-100-1-F90-G12

Part number: 8141664

FESTO



## Data sheet

| Feature                                  | Value  |
|--|--|
| Size                                     | 240<br>300<br>480<br>700<br>900                                    |
| Mounting position                        | Any  |
| Structural design                        | Adapter for rotary actuator  |
| Valve connection conforms to standard    | VDI/VDE 3847-2   |
| Operating pressure                       | 0 MPa...0.9 MPa<br>0 bar...9 bar                                   |
| Explosion prevention and protection      | Zone 1 (ATEX)<br>Zone 2 (ATEX)<br>Zone 21 (ATEX)<br>Zone 22 (ATEX) |
| Operating medium                         | Compressed air as per ISO 8573-1:2010 [7:7:-]<br>Inert gas         |
| Information on operating and pilot media | Operation with oil lubrication not possible                        |
| Corrosion resistance class (CRC)         | 3 - High corrosion stress  |
| LABS (PWIS) conformity                   | VDMA24364 zone III   |
| Temperature of medium                    | -40 °C...80 °C   |
| Ambient temperature                      | -40 °C...80 °C   |
| Product weight                           | 2225 g   |
| Type of mounting                         | With accessories   |
| Pneumatic connection                     | Sub-base design, airing  |
| Pneumatic connection 1                   | G1/2   |
| Pneumatic connection 2                   | Internal   |
| Pneumatic connection 3                   | G1/2   |
| Pneumatic connection 4                   | Internal   |
| Note on materials                        | RoHS-compliant   |
| Cover material                           | Smooth-anodized wrought aluminum alloy (20 µm)                     |
| Seals material                           | EPDM<br>NBR  |
| Housing material                         | Smooth-anodized wrought aluminum alloy (20 µm)                     |
| Material of screws                       | High-alloy stainless steel   |