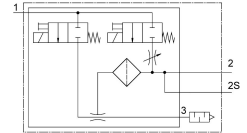
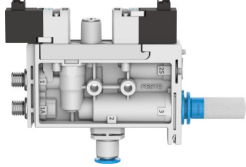


Vacuum generator OVEL-7-H-15-P-VQ4-UC-C-A-H3

Part number: 8141095

FESTO



Data sheet

Feature	Value
Nominal width of Laval nozzle	0.7 mm
Width dimension	15 mm
Muffler construction type	Closed
Mounting position	Any
Ejector characteristics	High vacuum Standard
Grade of filtration	40 µm
Manual override	Non-detenting
Integrated function	Electric ejector pulse Flow control Shut off valve, electric Compressed air filter Muffler, closed
Structural design	T-shape
Valve function	Closed
Operating pressure for max. suction rate	0.4 MPa 4 bar 58 psi
Operating pressure	0.2 MPa...0.7 MPa 2 bar...7 bar 29 psi...101.5 psi
Operating pressure for max. vacuum	0.48 MPa 4.8 bar 69.6 psi
Max. vacuum	92 %
Nominal operating pressure	0.4 MPa 4 bar 58 psi
Max. suction rate with respect to atmosphere	17 l/min
Air supply time at nominal operating pressure with ejector pulse	1.2 s
DC operating voltage range	21.6 V...26.4 V
Duty cycle	100%
Coil characteristics	24 V DC: 1.0 W
Certification	c UL us - Listed (OL)
CE marking (see declaration of conformity)	As per EU EMC directive

Feature	Value
Operating medium	Compressed air as per ISO 8573-1:2010 [7:4:4]
Information on operating and pilot media	Operation with oil lubrication not possible
Corrosion resistance class (CRC)	2 - Moderate corrosion stress
LABS (PWIS) conformity	VDMA24364-B1/B2-L
Temperature of medium	0 °C...50 °C
Noise level at nominal operating pressure	56 dB(A)
Degree of protection	IP40
Ambient temperature	0 °C...50 °C
Product weight	57 g
Electrical connection input, function	Ejector pulse Vacuum generator
Electrical connection input, connection type	2x plugs
Electrical input connection, connection technology	Connection diagram H
Electrical connection, input, number of pins/wires	2
Electrical input connection, mounting type	Snap-locking
Type of mounting	On terminal strip
Pneumatic connection 1	Common port
Pneumatic connection 3	Muffler, closed
Vacuum connection	For pneumatic tubing outside diameter 4 mm
Material of connecting thread	POM
Note on materials	RoHS-compliant
Seals material	NBR
Female nozzle material	POM
Compressed air filter material	POM
Housing material	PA-reinforced
Hollow bolt material	Wrought aluminum alloy
Material of adjusting screw	Steel
Muffler material	PA-reinforced PE
Material of screws	Steel
Material of jet nozzle	Wrought aluminum alloy