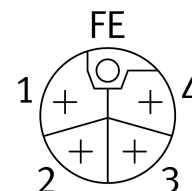
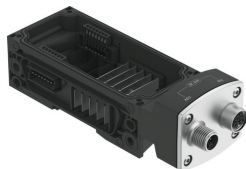


System supply

CPX-AP-A-S-2-M12-5P

Part number: 8129261

FESTO



Data sheet

Feature	Value
Dimensions W x L x H	(installation dimensions) 50.1 mm x 150 mm x 45.6 mm
Width dimension	50.1 mm
Type of mounting	On H-rail with accessories with through-hole for M5 screw with accessories with through-hole for M6 screw with accessories
Product weight	183 g
Mounting position	Arbitrary, on H-rail: horizontal
Ambient temperature	-20 °C...50 °C
Note on ambient temperature	Observe ambient temperature derating according to IEC 61131-2:2017
Storage temperature	-20 °C...70 °C
Relative air humidity	5 - 95 % Non-condensing
Nominal altitude of use above sea level	<= 2000 m ASL (> 79.5 kPa)
Max. installation height	3500 m
Information on max. installation height	> 2000 m ASL (< 79.5 kPa) Observe ambient temperature derating according to IEC 61131-2:2017
Corrosion resistance class (CRC)	1 - Low corrosion stress
Vibration resistance	Transport application test with severity level 2 as per FN 942017-4 and EN 60068-2-6
Note on vibration resistance	SG1 on H-rail SG2 on direct mounting Transport application test with severity level 1 as per FN 942017-4 and EN 60068-2-6
Shock resistance	Shock test with severity level 2 as per FN 942017-5 and EN 60068-2-27
Note on shock resistance	30 g/11 ms as per EN 60068-2-27 SG1 on H-rail SG2 on direct mounting Shock test with severity level 1 as per FN 942017-5 and EN 60068-2-27
Protection class	III
Overvoltage category	II
LABS (PWIS) conformity	VDMA24364-B2-L
Material fire test	UL94 V-0 (housing)

Feature	Value
Note on materials	RoHS-compliant Halogen-free Free of phosphoric acid ester
Housing material	PA-reinforced
Material of flange	Die-cast zinc, nickel-plated
Material of screws	Steel, nickel-plated
Seals material	PU foam
O-ring material	FPM
Power supply, function	Incoming electronics/sensors and load and functional earth
Power supply, type of connection	Plug
Power supply, connection technology	M12x1, L-coded as per EN 61076-2-111
Power supply, number of pins/wires	5
Voltage forwarding, function	Outgoing electronics/sensors and load and functional earth
Voltage forwarding, connection type	Socket
Voltage forwarding, number of pins/wires	5
Note regarding operating voltage	SELV/PELV fixed power supplies required Note voltage drop
Note on nominal operating voltage DC	2x24 V [XD1,PS,PL] Protected Extra-Low-Voltage as per IEC 60204-1
Nominal operating voltage DC load	24 V
Nominal operating voltage DC for electronics/sensors	24 V
Power supply, conductor diameter	2.5 mm ²
Nominal current	16 A
Max. power supply	2 x 16 A (external fuse required)
Potential separation between the supply voltages electronics/sensor technology and load/valves	yes