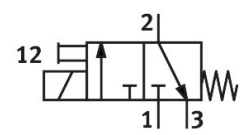
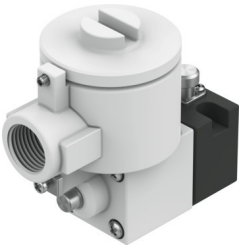


# Pilot valve

## MGXDH-3/2-H-T-1.2-110DC-EX

Part number: 8118346

FESTO



### Data sheet

Feature	Value
Valve function	3/2, closed, monostable
Actuation type	Electrical
Operating pressure	-0.09 MPa...0.8 MPa -0.9 bar...8 bar -13.05 psi...116 psi
Structural design	Shut off valve
Reset method	Mechanical spring
CE marking (see declaration of conformity)	as per EU explosion protection directive (ATEX)
Explosion protection certification outside the EU	EPL Db (CN) EPL Db (IEC-EX) EPL Gb (CN) EPL Gb (IEC-EX)
Certificate issuing authority	ATEX: CML 15 ATEX 1119X IEC: IECEx CML 17.0147X
ATEX category gas	II 2G
ATEX category for dust	II 2D
Type of ignition protection for gas	Ex db IIC T4 Gb
Type of (ignition) protection for dust	Ex tb IIIC T135°C Db
Explosive ambient temperature	-65°C ≤ Ta ≤ +40°C
Degree of protection	IP66
Manual override	Non-detenting
Flow direction	Non-reversible
Duty cycle	100%
Insulation class	H
Coil characteristics	110 V DC: 3.0 W
Permissible frequency fluctuations	+/- 10%
Explosion prevention and protection	Zone 1 (ATEX) Zone 1 (CN) Zone 1 (IEC-EX) Zone 2 (ATEX) Zone 21 (ATEX) Zone 21 (CN) Zone 21 (IEC-EX) Zone 22 (ATEX)
Operating medium	Compressed air as per ISO 8573-1:2010 [7:4:4]

Feature	Value
Information on operating and pilot media	Operation with oil lubrication possible (required for further use)
Corrosion resistance class (CRC)	2 - Moderate corrosion stress
LABS (PWIS) conformity	VDMA24364 zone III
Ambient temperature	-65 °C...80 °C
Type of mounting	CNOMO
Note on materials	RoHS-compliant