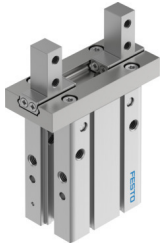


Parallel gripper DHPC-L-25-A-B-1

Part number: 8116871

FESTO



Data sheet

| Feature | Value |
|---|--|
| Size | 25 |
| Stroke per gripper jaw | 11 mm |
| Max. interchangeability | 0.2 mm |
| Max. gripper jaw angular play ax, ay | 0 deg |
| Max. gripper jaw backlash Sz | 0 mm |
| Rotational symmetry | 0.2 mm |
| Pneumatic gripper repetition accuracy | 0.02 mm |
| Number of gripper jaws | 2 |
| Actuator system | Pneumatic |
| Mounting position | Any |
| Mode of operation | Double-acting |
| Gripper function | Parallel |
| Gripping force backup | Without |
| Structural design | Connection direction downwards Lever Side mounting type for gripper fingers Positively driven motion sequence |
| Guide | Ball guide |
| Position sensing | For proximity sensor |
| Variants | Metals with copper, zinc or nickel by mass as main constituent are excluded from use. Exceptions are nickel in steel, chemically nickel-plated surfaces, printed circuit boards, cables, electrical plug connectors and coils. |
| Operating pressure | 0.1 MPa...0.8 MPa 1 bar...8 bar 14.5 psi...116 psi |
| Max. operating frequency of pneumatic gripper | 3 Hz |
| Min. opening time at 6 bar | 162 ms |
| Min. closing time at 6 bar | 93 ms |
| Operating medium | Compressed air as per ISO 8573-1:2010 [7:4:4] |
| Information on operating and pilot media | Operation with oil lubrication possible (required for further use) |
| Corrosion resistance class (CRC) | 0 - No corrosion stress |
| LABS (PWIS) conformity | VDMA24364-B2-L |

| Feature | Value |
|--|---|
| Suitability for the production of Li-ion batteries | Product corresponds to Festo's internal product definition for use in battery production: Metals with more than 1% by mass of copper, zinc or nickel are excluded from use. The exceptions are nickel in steel, chemically nickel-plated surfaces, circuit boards, cables, electrical plug connectors and coils |
| Ambient temperature | -10 °C...60 °C |
| Gripping force per gripper jaw at 6 bar, opening | 305.3 N 152.6 N |
| Gripping force per gripper jaw at 6 bar, closing | 255.6 N 127.8 N |
| Mass moment of inertia | 2.14 kgcm ² |
| Maximum force on gripper jaw F _z , static | 155.9 N |
| Maximum torque on gripper jaw, M _x static | 4.83 Nm |
| Maximum torque on gripper jaw, M _y static | 2.52 Nm |
| Maximum torque on gripper jaw, M _z static | 2.52 Nm |
| Product weight | 484 g |
| Type of mounting | Direct mounting via through-hole Direct fastening via thread On mounting frame With through-hole and dowel pin With internal thread and dowel pin Optionally: |
| Pneumatic connection | M5 |
| Note on materials | RoHS-compliant |
| Housing material | Aluminum, anodized |
| Gripper jaw material | High-alloy stainless steel |