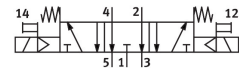
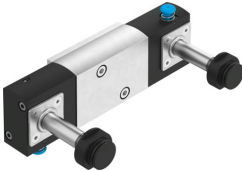


# Air Solenoid valve

## VSNC-F-P53E-MH-G14-F19

Part number: 8116396

**FESTO**



## Data sheet

| Feature                                  | Value                                                              |
|------------------------------------------|--------------------------------------------------------------------|
| Valve function                           | 5/3, exhausted                                                     |
| Actuation type                           | Electrical                                                         |
| Width                                    | 32 mm                                                              |
| Standard nominal flow rate               | 1050 l/min                                                         |
| Pneumatic working port                   | NAMUR connection diagram                                           |
| Operating voltage                        | Via solenoid coil, to be ordered separately                        |
| Operating pressure                       | 0.3 MPa...0.8 MPa<br>3 bar...8 bar                                 |
| Structural design                        | Piston gate valve                                                  |
| Reset method                             | Mechanical spring                                                  |
| Exhaust air function                     | With flow control option                                           |
| Sealing principle                        | Soft                                                               |
| Mounting position                        | Any                                                                |
| Conforms to standard                     | VDI/VDE 3845 (NAMUR)                                               |
| Manual override                          | Non-detenting                                                      |
| Type of control                          | Pilot-controlled                                                   |
| Pilot air supply port                    | Internal                                                           |
| Flow direction                           | Non-reversible                                                     |
| Lap                                      | Overlap                                                            |
| b-value                                  | 0.4                                                                |
| C value                                  | 4.4 l/sbar                                                         |
| Switching time off                       | 85 ms                                                              |
| On switching time                        | 24 ms                                                              |
| Changeover time                          | 60 ms                                                              |
| Duty cycle                               | 100%                                                               |
| Coil characteristics                     | See solenoid coil, to be ordered separately                        |
| Operating medium                         | Compressed air as per ISO 8573-1:2010 [7:4:4]                      |
| Information on operating and pilot media | Operation with oil lubrication possible (required for further use) |
| Corrosion resistance class (CRC)         | 2 - Moderate corrosion stress                                      |
| LABS (PWIS) conformity                   | VDMA24364-B2-L                                                     |
| Temperature of medium                    | -20 °C...60 °C                                                     |
| Ambient temperature                      | -20 °C...60 °C                                                     |

| Feature                 | Value                    |
|-------------------------|--------------------------|
| Product weight          | 619 g                    |
| Type of mounting        | With through-hole        |
| Venting hole connection | Not ducted               |
| Pneumatic connection 1  | G1/4                     |
| Pneumatic connection 2  | NAMUR connection diagram |
| Pneumatic connection 3  | G1/4                     |
| Pneumatic connection 4  | NAMUR connection diagram |
| Pneumatic connection 5  | G1/4                     |
| Note on materials       | RoHS-compliant           |
| Seals material          | NBR                      |
| Housing material        | Wrought aluminum alloy   |
| Material of screws      | Steel, galvanized        |