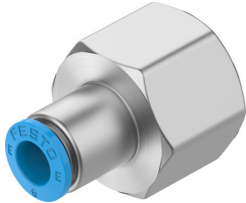


**Push-in fitting**  
**NPQE-D-G38F-Q6-P5**  
 Part number: 8112995

**FESTO**



**Data sheet**

Feature	Value
Size	Standard
Nominal width	4.5 mm
Mounting position	Any
Design	Straight design
Pack size	5
Structural design	Push-pull principle
Operating pressure for entire temperature range	-0.095 MPa...0.8 MPa -0.95 bar...8 bar -13.775 psi...116 psi
Operating medium	Compressed air as per ISO 8573-1:2010 [7:4:4]
Information on operating and pilot media	Operation with oil lubrication possible
Corrosion resistance class (CRC)	1 - Low corrosion stress
LABS (PWIS) conformity	VDMA24364 zone III
Cleanroom class	Class 4 according to ISO 14644-1
Ambient temperature	-5 °C...60 °C
Product weight	32.67 g
Type of mounting	External hexagon, AF 21
Pneumatic connection 1	Internal thread G3/8
Pneumatic connection 2	for pneumatic tubing outside diameter 6 mm
Releasing ring color	Blue
Note on materials	RoHS-compliant
Housing material	Brass, nickel-plated
Releasing ring material	POM
Material of tubing seal	NBR
Material of tube retaining claw	Stainless steel