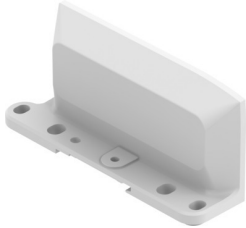


End plate CPX-AP-A-EPR

Part number: 8112477

FESTO



Data sheet

Feature	Value
Dimensions W x L x H	(installation dimensions) 30.4 mm x 117.2 mm x 53.6 mm
Width dimension	50.1 mm
Type of mounting	Direct mounting via through-hole On H-rail with accessories with through-hole for M5 screw with through-hole for M6 screw
Product weight	116 g
Mounting position	Arbitrary, on H-rail: horizontal
Ambient temperature	-20 °C...50 °C
Note on ambient temperature	Observe ambient temperature derating according to IEC 61131-2:2017
Storage temperature	-20 °C...70 °C
Relative air humidity	5 - 95 % Non-condensing
Nominal altitude of use above sea level	<= 2000 m ASL (> 79.5 kPa)
Max. installation height	3500 m
Information on max. installation height	> 2000 m ASL (< 79.5 kPa) Observe ambient temperature derating according to IEC 61131-2:2017
Corrosion resistance class (CRC)	1 - Low corrosion stress
Vibration resistance	Transport application test with severity level 2 as per FN 942017-4 and EN 60068-2-6
Note on vibration resistance	SG1 on H-rail SG2 on direct mounting Transport application test with severity level 1 as per FN 942017-4 and EN 60068-2-6
Shock resistance	Shock test with severity level 2 as per FN 942017-5 and EN 60068-2-27
Note on shock resistance	30 g/11 ms as per EN 60068-2-27 SG1 on H-rail SG2 on direct mounting Shock test with severity level 1 as per FN 942017-5 and EN 60068-2-27
Protection class	III
Overvoltage category	II
LABS (PWIS) conformity	VDMA24364-B2-L
Note on materials	RoHS-compliant Halogen-free Free of phosphoric acid ester

Feature	Value
End plate material	Die-cast aluminum, coated
Material of screws	Steel, nickel-plated
Seals material	PU foam