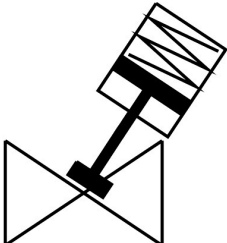


# Angle seat valve

## VZX A-B-TS6-25-M2-B1T-8.3-K-46-17-PM

Part number: 8111592

FESTO



### Data sheet

| Feature                | Value  |
|------------------------|--|
| Structural design      | Poppet valve with piston actuator  |
| Actuation type         | Pneumatic  |
| Mounting position      | Any  |
| Type of mounting       | Line installation  |
| Cable connection       | Threaded sleeve G1 as per DIN ISO 228  |
| Valve function         | 2/2  |
| Flow direction         | Non-reversible<br>Under valve seat, for gaseous and liquid media   |
| Medium pressure        | 0 MPa...0.83 MPa<br>0 bar...8.3 bar  |
| Reset method           | Mechanical spring  |
| Type of control        | Externally controlled  |
| Pneumatic connection   | Internal thread G1/8   |
| Operating pressure     | 0.5 MPa...0.7 MPa<br>5 bar...7 bar<br>72.5 psi...101.5 psi   |
| Medium                 | Vapor<br>Hydraulic fluid based on mineral oil<br>Inert gas<br>Mineral oil<br>Water<br>Filtered compressed air, 200 µm filter mesh<br>Neutral liquids |
| Control of the medium  | On/off mode  |
| Operating medium       | Compressed air as per ISO 8573-1:2010 [7:4:4]  |
| Max. viscosity         | 600 mm²/s  |
| Temperature of medium  | -10 °C...180 °C  |
| Ambient temperature    | 0 °C...60 °C   |
| Flow rate Kv           | 15.9 m³/h  |
| Use in exterior area   | Weather-protected locations class C1 based on IEC 60654-1  |
| Note on materials      | RoHS-compliant   |
| LABS (PWIS) conformity | VDMA24364 zone III   |

| Feature                          | Value                      |
|----------------------------------|----------------------------|
| Valve housing material           | Brass                      |
| Material number, fitting housing | CW724R                     |
| Seals material                   | FPM                        |
| Spindle seal material            | PTFE                       |
| Seat seal material               | PTFE                       |
| Product weight                   | 1486 g                     |
| Actuator size                    | 46 mm                      |
| Stroke                           | 17 mm                      |
| Control function                 | Closed by spring force, NC |
| Position sensing                 | With mechanical indicator  |
| Drive housing material           | PA-reinforced              |
| Storage temperature              | -10 °C...60 °C             |
| Degree of protection             | IP65<br>IP67               |
| Piston rod material              | High-alloy stainless steel |
| Cover material                   | PA-reinforced              |