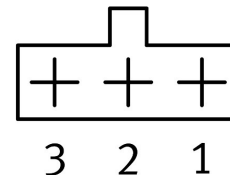
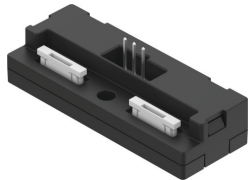


Electrical plug base NEFV-V14-XX4G3-T1G3

Part number: 8109878

FESTO



Data sheet

| Feature | Value |
|--|--------------------------------|
| Dimensions W x L x H | 18.7 mm x 50 mm x 15.3 mm |
| Type of mounting | With through-hole for M3 screw |
| Cable outlet | Straight |
| Product weight | 6.8 g |
| Electrical connection 1, function | Field device end |
| Electrical connection 1, design | Rectangular |
| Electrical connection 1, connection type | Socket |
| Electrical connection 1, connection technology | ZIF |
| Electrical connection 1, number of pins/wires | 12 |
| Electrical connection 1, occupied pins/wires | 3 |
| Electrical connection 1, type of mounting | Inserted |
| Electrical connection 2, function | Field device end |
| Electrical connection 2, design | Rectangular |
| Electrical connection 2, connection type | Socket |
| Electrical connection 2, connection technology | ZIF |
| Electrical connection 2, number of pins/wires | 12 |
| Electrical connection 2, occupied pins/wires | 3 |
| Electrical connection 2, type of mounting | Inserted |
| Electrical connection 3, function | Control side |
| Electrical connection 3, design | Rectangular |
| Electrical connection 3, connection type | Plug |
| Electrical connection 3, connection technology | Festo-specific coding |
| Electrical connection 3, number of pins/wires | 3 |
| Electrical connection 3, occupied pins/wires | 3 |
| Electrical connection 3, type of mounting | Inserted |
| DC operating voltage range | 0 V...310 V |
| Protective earth connection | Not available |
| Shield | no |
| Degree of protection | IP40 |
| Note on degree of protection | In mounted state |
| Ambient temperature | -10 °C...60 °C |

| Feature | Value |
|--|---------------------------------------|
| Storage temperature | -40 °C...80 °C |
| CE marking (see declaration of conformity) | As per EU RoHS directive |
| UKCA marking (see declaration of conformity) | To UK instructions for EMC |
| LABS (PWIS) conformity | VDMA24364-B2-L |
| Note on materials | RoHS-compliant |
| Contamination level | 2 |
| Corrosion resistance class (CRC) | 1 - Low corrosion stress |
| Housing material | PA |
| Housing colour | Black |
| Material of pin contacts | Bronze, nickel-plated and gold-plated |