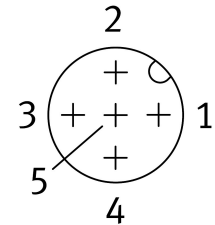
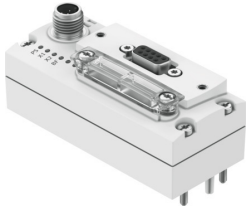


Bus node CTEU-PB-EX1C

Part number: 8107588

FESTO



Data sheet

Feature	Value
Protocol	Profibus DP
Dimensions W x L x H	40 mm x 91 mm x 50 mm
Width dimension	40 mm
Type of mounting	On electrical interface On electrical sub-base
Product weight	90 g
Ambient temperature	-5 °C...50 °C
Storage temperature	-20 °C...70 °C
Degree of protection	IP65 IP67
Note on degree of protection	In mounted state Unused connections sealed
Corrosion resistance class (CRC)	2 - Moderate corrosion stress
LABS (PWIS) conformity	VDMA24364 zone III
CE marking (see declaration of conformity)	As per EU EMC directive As per EU RoHS directive
UKCA marking (see declaration of conformity)	To UK instructions for EMC To UK RoHS instructions
Certification	RCM compliance mark c UL us - Listed (OL)
Certificate issuing authority	UL E239998
Note on materials	RoHS-compliant
Housing material	PA
LED display (product-specific)	PS: operating voltage for electronics and load supply X1: module system status at I-Port 1 X2: module system status at I-Port 2
LED display (bus-specific)	BF: bus fault
Diagnostics	Communication error System diagnostics Undervoltage
Control elements	DIL switch
Note on fieldbus interface	Plug/socket M12x1 B-coded, 5-pin, degree of protection: IP65 Optional connection technology with accessories:

Feature	Value
Fieldbus interface, type	PROFIBUS
Fieldbus interface, protocol	PROFIBUS DP
Fieldbus interface, connection type	Socket
Fieldbus interface, connection technology	Sub-D
Fieldbus interface, number of poles/wires	9
Fieldbus interface, galvanic isolation	yes
Fieldbus interface, transmission rate	1.5 Mbit/s 12 Mbit/s 187.5 kbit/s 19.2 kbit/s 500 kbit/s 9.6 kbit/s 93.75 kbit/s
Max. address capacity inputs	16 byte
Max. address capacity outputs	16 byte
Parameterization	Diagnostic behavior Fail-safe response
Internal cycle time	1 ms per 1 byte of user data
Configuration support	GSD file
Additional functions	Emergency message System status via diagnostic test
Power supply, function	Electronics and load
Power supply, type of connection	Plug
Power supply, connection technology	M12x1, A-coded as per EN 61076-2-101
Power supply, number of pins/wires	5
DC operating voltage range	18 V...30 V
Nominal operating voltage DC	24 V
Max. power supply	4 A
Intrinsic current consumption at nominal operating voltage	Typ. 100 mA