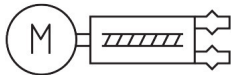
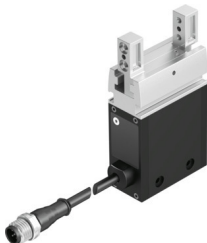


Parallel gripper EHPS-16-A-LK

Part number: 8103809

FESTO



Data sheet

Feature	Value
Size	16
Stroke per gripper jaw	10 mm
Max. interchangeability	0.2 mm
Max. gripper jaw angular play ax, ay	0.4 deg
Max. gripper jaw backlash Sz	0.05 mm
Rotational symmetry	0.2 mm
Pneumatic gripper repetition accuracy	0.03 mm
Number of gripper jaws	2
Actuator system	Electrical
Mounting position	Any
Gripper function	Parallel
Structural design	Worm gear T-shape Gear rack/pinion Electric gripper
Conforms to standard	IEC 61010-1
Guide	Sliding guide
Position sensing	With Hall sensor With integrated linear potentiometer Via IO-Link interface
Motor type	DC servo motor
Ready status indication	LED
Max. cycle rate	1.1 Hz
Max. mass per external gripper finger	100 g
Max. current consumption	1 A
Nominal operating voltage DC	24 V
Permissible voltage fluctuations	+/- 10 %
Certification	RCM compliance mark
KC characters	KC EMC
CE marking (see declaration of conformity)	As per EU EMC directive As per EU RoHS directive
UKCA marking (see declaration of conformity)	To UK instructions for EMC To UK RoHS instructions

Feature	Value
Explosion protection certification outside the EU	EPL Db (GB) EPL Gb (GB)
Explosion prevention and protection	Zone 1 (UKEX) Zone 21 (UKEX)
Corrosion resistance class (CRC)	1 - Low corrosion stress
LABS (PWIS) conformity	VDMA24364-B2-L
Suitability for the production of Li-ion batteries	Metals with more than 5% by mass of copper are excluded from use. Exception are printed circuit boards, cables, electrical connectors and coils
Noise level	70 dB(A)
Degree of protection	IP40
Ambient temperature	5 °C...60 °C
Total gripping force	154 N
Mass moment of inertia	0.78 kgcm ²
Maximum force on gripper jaw Fz, static	200 N
Maximum torque on gripper jaw, Mx static	7 Nm
Maximum torque on gripper jaw, My static	4.4 Nm
Maximum torque on gripper jaw, Mz static	7 Nm
Relubrication interval for guidance elements	2 MioCyc
Product weight	296 g
Protocol	IO-Link®
IO-Link®, protocol version	Device V 1.1
IO-Link®, communication mode	COM3 (230.4 kBd)
IO-Link®, SIO mode support	No
IO-Link®, port class	Device B
IO-Link®, number of ports	Device 1
IO-Link®, process data width OUT	8 bytes
IO-Link®, process data content OUT	16 bit (ControlWord) 16 bit (GrippingPosition) 8 bit (GrippingForce) 8 bit (GrippingMode) 8 bit (GrippingTolerance) 8 bit (WorkpieceNo)
IO-Link®, process data width IN	6 bytes
IO-Link®, process data content IN	16 bit (ActualPosition) 16 bit (ErrorNumber) 16 bit (StatusWord)
IO-Link®, minimum cycle time	5 ms
IO-Link®, data memory required	500 byte
IO-Link®, device ID	0x000031
Electrical connection	5-pin Cable with plug M12x1
Type of mounting	With internal thread and centering sleeve Via through-hole and centering sleeve Optionally:
Note on materials	RoHS-compliant
Housing material	Wrought aluminum alloy, anodized
Gripper jaw material	High-alloy stainless steel