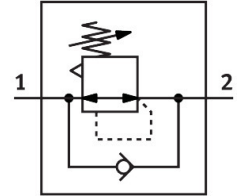


Pressure regulator MS6-LR-1/2-D6-A8-B

Part number: 8099203

FESTO



Data sheet

| Feature | Value |
|--|--|
| Size | 6 |
| Series | MS |
| Actuator lock | Rotary knob with detent |
| Mounting position | Any |
| Structural design | Pressure regulator without pressure gauge Directly controlled piston regulator |
| Controller function | Outlet pressure constant With secondary exhausting With return flow function |
| Pressure gauge | G1/8 prepared |
| Operating pressure | 0.1 MPa...1 MPa 1 bar...10 bar |
| Pressure regulation range | 0.3 bar...7 bar |
| Max. pressure hysteresis | 0.035 MPa 0.35 bar 5.075 psi |
| Standard nominal flow rate | 6000 l/min |
| Operating medium | Compressed air as per ISO 8573-1:2010 [7:4:4] Inert gas |
| Information on operating and pilot media | Operation with oil lubrication possible (required for further use) |
| Corrosion resistance class (CRC) | 1 - Low corrosion stress |
| LABS (PWIS) conformity | VDMA24364-B1/B2-L |
| Cleanroom class | Class 7 according to ISO 14644-1 |
| Storage temperature | -5 °C...50 °C |
| Temperature of medium | -5 °C...50 °C |
| Ambient temperature | -5 °C...50 °C |
| Product weight | 479 g |
| Type of mounting | Front panel mounting Line installation With accessories Optionally: |
| Pneumatic connection 1 | G1/2 |
| Pneumatic connection 2 | G1/2 |

| Feature | Value |
|-----------------------|---------------------------------------|
| Note on materials | RoHS-compliant |
| Lower cover material | PA |
| Seals material | NBR |
| Rotary knob material | POM |
| Material of spring | High-alloy steel Steel, galvanized |
| Housing material | PA-reinforced |
| Valve tappet material | POM |