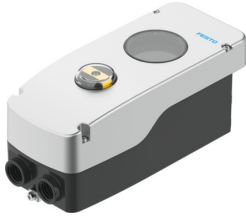


Positioners

CMSH-S-V-SD-AL-C1N12-HA

Part number: 8097426

FESTO



Data sheet

| Feature | Value |
|---------------------------------------------|-------------------------------------------------------------|
| Structural design | digital, electropneumatic positioner |
| Mode of operation | Double-acting Single-acting |
| Mounting position | Any |
| Measuring principle of linear potentiometer | Potentiometer |
| Sensing range | 0 deg...115 deg |
| Display | LCD display, via software 90° rotatable |
| Setting options | Via display and pushbuttons |
| Cycle time | 20 ms |
| Nominal altitude of use above sea level | <= 2000 m NHN |
| Overvoltage category | II |
| Operating pressure | 0.14 MPa...0.8 MPa 1.4 bar...8 bar 20.3 psi...116 psi |
| Operating medium | Compressed air as per ISO 8573-1:2010 [7:4:4] |
| Information on operating and pilot media | Operation with oil lubrication not possible |
| Air performance at $\Delta p = 6$ bar | 270 l/min...380 l/min |
| Note on air performance | Depending on additional specific accessories |
| Pneumatic connection | with specific accessories |
| Reverse polarity protection | yes |
| Connection resistance | 3 kOhm...80 kOhm |
| Analog inputs, signal range | 4 – 20 mA with HART |
| Analog inputs, input impedance | 480 ohms at 20 mA |
| Analog inputs, overload protection | <65 mA |
| Analog inputs, galvanic isolation | yes |
| Input characteristics | 1x to IEC 61131-2, type 3 |
| Digital inputs, reverse polarity protection | yes |
| Digital inputs, electrical isolation | yes |
| Digital inputs, overload protection | 33 V |
| Electrical connection 1, function | Analog input Digital input external path/angle sensor |
| Electrical connection 1, connection type | Terminal strip |

| Feature | Value |
|------------------------------------------------|--------------------------------------------------------------------------------------------------------|
| Electrical connection 1, connection technology | Spring-loaded terminal |
| Electrical connection 1, number of pins/wires | 7 |
| Cable fitting | 2x 1/2 NPT |
| Max. cable length | 30 m for external position sensor Shielded |
| Ambient temperature | -40 °C...80 °C |
| Note on ambient temperature | Display: -30 - 80°C |
| Storage temperature | -40 °C...80 °C |
| Climatic category | 1K5 as per EN 60721 for storage 4K3 as per EN 60721 for operation |
| Degree of protection | IP66 IP67 |
| Shock resistance | Shock test with severity level 1 as per FN 942017-5 and EN 60068-2-27 |
| Vibration resistance | Transport application test with severity level 2 as per FN 942017-4 and EN 60068-2-6 |
| Contamination level | 3 |
| Certification | RCM compliance mark |
| CE marking (see declaration of conformity) | As per EU EMC directive as per EU explosion protection directive (ATEX) As per EU RoHS directive |
| UKCA marking (see declaration of conformity) | To UK instructions for EMC To UK RoHS instructions |
| Housing material | Aluminum, powder-coated |
| Inspection window material | PC |
| Shaft material | High-alloy stainless steel |
| Quick-coupling material | High-alloy stainless steel |
| Material of screws | Steel, galvanized |
| Seals material | EPDM NBR VMQ |
| LABS (PWIS) conformity | VDMA24364 zone III |
| Note on materials | RoHS-compliant |
| Product weight | 2055 g |