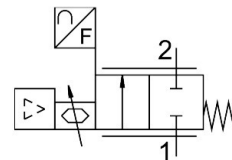


# Proportional flow control valve VEMD-L-6-14-20-D21-M5-1-R1-V4

Part number: 8086472

**FESTO**



## Data sheet

Feature	Value
Degree of protection	IP40
Note on degree of protection	IP51 for horizontal installation
Flow rate control range	0 l/min...20 l/min
Note on the flow rate control range	The specified flow rate control range only applies at room temperature. Above room temperature, a reduction of the max. adjustable flow rate may occur.
Flow direction	Non-reversible
Operating pressure	0 MPa...0.25 MPa 0 bar...2.5 bar
Overload pressure	0.6 MPa 6 bar 87 psi
Burst pressure	1 MPa 10 bar 145 psi
Accuracy of flow rate	± (4% o.m.v. + 1.25% FS)
Repetition accuracy in ± %FS	1 %FS
Hysteresis in ± %FS	2.5 %FS
Linearity error FS	2 %
Temperature coefficient	0.1 %/K
Valve function	2-way proportional flow control valve
Nominal width	1.4 mm
Pneumatic connection 1	Internal thread M5
Pneumatic connection 2	Internal thread M5
Medium	Compressed air to ISO 8573-1:2010 [5:4:1] Inert gas Oxygen (oxygen applications according to IEC 60601-1 only on request) Nitrogen
Information on medium	Operation with oil lubrication not possible
Special features	Oxygen-compatible as per DIN EN 1797
Ambient conditions	Not suitable for use in environments enriched with oxygen according to IEC 60601-1
Duty cycle	100%
Temperature of medium	5 °C...40 °C

Feature	Value
Ambient temperature	0 °C...50 °C
Storage temperature	-20 °C...70 °C
Nominal operating voltage DC	24 V
DC operating voltage range	22 V...26.4 V
Max. current consumption	40 mA
Max. electrical power consumption	1 W
Electrical connection	4-pin M8x1 A-coded as per EN 61076-2-104 Plug
Reference value	0.2 - 10 V
Analog input signal range	0.2 - 10 V
Analog output signal range	0.2 - 10 V
Reverse polarity protection	for operating voltage connections
Product weight	92 g
Seals material	EPDM NBR
Cover material	PA-reinforced
Note on materials	RoHS-compliant
Dimensions W x L x H	37 mm x 70 mm x 31 mm
Type of mounting	Direct fastening via thread
Mounting position	Any
Certification	RCM compliance mark
Conforms to standard	EN 61000-6-2 (EMC) EN 61000-6-3 (EMC)
KC characters	KC EMC
CE marking (see declaration of conformity)	As per EU EMC directive As per EU RoHS directive
UKCA marking (see declaration of conformity)	To UK instructions for EMC To UK RoHS instructions
LABS (PWIS) conformity	VDMA24364 zone III