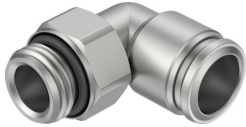


Push-in fitting NPQR-L-G12-Q16

Part number: 8085690

FESTO



Data sheet

Feature	Value
Size	Standard
Nominal width	14 mm
Tubing insertion depth	23.5 mm
Type of seal on screwed plug	Sealing ring
Mounting position	Any
Design	L-shape
Pack size	1
Structural design	Push-pull principle
Operating pressure for entire temperature range	-0.095 MPa...1.2 MPa -0.95 bar...12 bar -13.775 psi...174 psi
Information on operating pressure	Water: max. 0.7 MPa at 0 - 80 °C
Certificate issuing authority	NSF C0556009
Operating medium	Compressed air as per ISO 8573-1:2010 [7::-] Water (liquid, ice-free)
Information on operating and pilot media	Operation with oil lubrication possible
Corrosion resistance class (CRC)	4 - Particularly high corrosion stress
LABS (PWIS) conformity	VDMA24364-B2-L
Suitability for the production of Li-ion batteries	Product corresponds to Festo's internal product definition for use in battery production: Metals with more than 1% by mass of copper, zinc or nickel are excluded from use. The exceptions are nickel in steel, chemically nickel-plated surfaces, circuit boards, cables, electrical plug connectors and coils
Cleanroom class	Class 4 according to ISO 14644-1
For use in the food industry	See declaration of conformity NSF/ANSI 169
Ambient temperature	-5 °C...150 °C
Note on ambient temperature	with PUN-H: -20°C - 60°C
Nominal tightening torque	9 Nm
Tolerance for nominal tightening torque	± 20%
Product weight	99.7 g
Type of mounting	External hexagon, AF 25
Pneumatic connection 1	External thread G1/2
Pneumatic connection 2	for pneumatic tubing outside diameter 16 mm

Feature	Value
Note on materials	RoHS-compliant
Housing material	High-alloy stainless steel
Material of threaded seal	FPM
Guard ring material	High-alloy stainless steel
Releasing ring material	High-alloy stainless steel
Material of tubing seal	FPM
Material of tube retaining claw	High-alloy stainless steel
Thrust ring material	PPSU