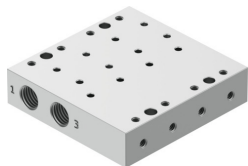


Manifold rail
VABM-P6-15MB-G18-M5-4
Part number: 8083544



Data sheet

Feature	Value
Width dimension	15 mm
Structural design	Connection direction downwards
Max. no. of valve positions	4
Corrosion resistance class (CRC)	2 - Moderate corrosion stress
LABS (PWIS) conformity	VDMA24364-B2-L
Max. tightening torque for valve mounting	0.6 Nm
Product weight	140 g
Pneumatic connection 1	G1/8
Pneumatic connection 2	M5
Note on materials	RoHS-compliant
Manifold rail material	Wrought aluminum alloy