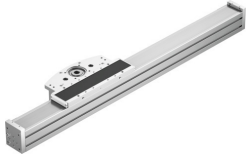


Cantilever linear actuator ELCC-TB-KF-90-200-0H-P0-CR

Part number: 8082399

FESTO



Data sheet

Feature	Value
Drive pinion effective diameter	50.93 mm
Working stroke	200 mm
Size	90
Stroke reserve	0 mm
Toothed belt pitch	5 mm
Mounting position	Any
Guide	Recirculating ball bearing guide
Structural design	Electromechanical cantilever axis
Max. acceleration	30 m/s ²
Max. speed	5 m/s
Repetition accuracy	±0.05 mm
Corrosion resistance class (CRC)	0 - No corrosion stress
LABS (PWIS) conformity	VDMA24364 zone III
Degree of protection	IP20
Ambient temperature	-10 °C...60 °C
2nd moment of area Iy	2667900 mm ⁴
2nd moment of area Iz	2049490 mm ⁴
Max. driving torque	33 Nm
Max. force Fy	13957 N
Max. force Fz	13523 N
Max. torque Mx	167 Nm
Max. torque My	1300 Nm
Max. torque Mz	1233 Nm
Max. feed force Fx	1200 N
Mass moment of inertia JH per meter of stroke	62.9 kgcm ²
Mass moment of inertia JL per kg of payload	6.5 kgcm ²
Mass moment of inertia JO	55.2 kgcm ²
Feed constant	160 mm/U
Reference service life	5000 km
Lubrication interval, distance dependent	1000 km
Moving mass at 0 mm stroke	5487 g

Feature	Value
Additional moving mass per 10 mm stroke	97 g
Basic weight with 0 mm stroke	14787 g
Additional weight per 10 mm stroke	97 g
Material of end caps	Wrought aluminum alloy, anodized
Profile material	Wrought aluminum alloy, anodized
Note on materials	RoHS-compliant
Drive head material	Wrought aluminum alloy, anodized
Guide rail material	Rolled steel, Corrotect coated
Housing material	High-alloy stainless steel
Slide material	Cast aluminum, anodized
Toothed belt clamping component material	Wrought aluminum alloy, anodized
Toothed belt material	Polychloroprene with glass cord and nylon coating