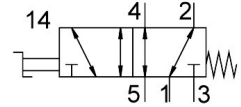


Selector valve VHEF-E-M52-M-G14

Part number: 8080971

FESTO



Data sheet

Feature	Value
Valve function	5/2, monostable
Actuation type	Manual
Width	20 mm
Standard nominal flow rate	1200 l/min
Pneumatic working port	G1/4
Operating pressure	-0.095 MPa...1 MPa -0.95 bar...10 bar
Structural design	Piston gate valve
Reset method	Mechanical spring
Nominal width	7 mm
Exhaust air function	With flow control option
Application note	Operate by hand only
Sealing principle	Soft
Mounting position	Any
Type of control	Direct
Flow direction	Reversible
Lap	Overlap
Max. switching frequency	0.5 Hz
Explosion prevention and protection	Zone 1 (ATEX) Zone 2 (ATEX) Zone 21 (ATEX) Zone 22 (ATEX)
Operating medium	Compressed air as per ISO 8573-1:2010 [7:::]
Information on operating and pilot media	Operation with oil lubrication possible (required for further use)
Corrosion resistance class (CRC)	1 - Low corrosion stress
LABS (PWIS) conformity	VDMA24364-B1/B2-L
Temperature of medium	-10 °C...60 °C
Ambient temperature	-10 °C...60 °C
Actuating torque	0.3 Nm
Max. force on actuator	200 N
Max. transverse load on actuator	200 N
Product weight	268 g

Feature	Value
Type of mounting	Front panel mounting With through-hole Optionally:
Pneumatic connection 1	G1/4
Pneumatic connection 2	G¼
Pneumatic connection 3	G1/4
Pneumatic connection 4	G1/4
Pneumatic connection 5	G1/4
Note on materials	RoHS-compliant
Cover material	PA-reinforced
Seals material	NBR
Housing material	Wrought aluminum alloy, anodized
Lever material	PA-reinforced