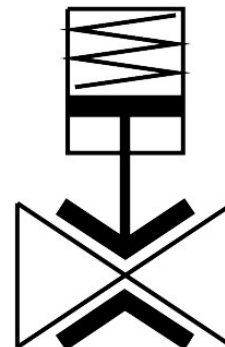


Pinch valve
VZQA-C-M22C-6-S1S1-V2V4E-4
Part number: 8079858

FESTO



Data sheet

Feature	Value
Structural design	Pinch valve, pneumatically operated
Actuation type	Pneumatic
Sealing principle	Soft
Mounting position	Any
Type of mounting	Line installation
Fitting connection	Clamp as per ASME-BPE, type A
Nominal width DN	6
Valve function	2/2, closed, monostable
Flow direction	Reversible
Medium pressure	0 MPa...0.4 MPa 0 bar...4 bar 0 psi...58 psi
Note on the medium pressure	Use in the vacuum range was tested up to -0.09 MPa with the air at room temperature. Depending on the application, a counter-vacuum may have to be created on the control side to guarantee the media flow.
Operating pressure	0.35 MPa...0.6 MPa 3.5 bar...6 bar 50.75 psi...87 psi
Nominal pressure of fitting PN	10
Burst pressure	1.6 MPa 16 bar 232 psi
Reset method	Mechanical spring
Type of control	Externally controlled
Auxiliary pilot air port 12	M3
Pilot medium	Compressed air as per ISO 8573-1:2010 [7:4:1]
Medium	Compressed air as per ISO 8573-1:2010 [-:~:1] Water
Max. viscosity	4000 mm ² /s

Feature	Value
Temperature of medium	-5 °C...100 °C
Ambient temperature	-5 °C...60 °C
Storage temperature	5 °C...20 °C
Flow rate Kv	0.7 m³/h
On switching time	125 ms
Switching time off	125 ms
Note on materials	RoHS-compliant
LABS (PWIS) conformity	VDMA24364 zone III
Housing material	High-alloy stainless steel
Material number of housing	1.4301
Housing cover material	High-alloy stainless steel
Material no. housing cover	1.4404 / AISI 316L
Seals material	FPM
Shut-off element material	EPDM
Product weight	302 g
For use in the food industry	See supplementary material information
Material of bowl	PPS